



**NATIONAL HIV/AIDS FACT SHEET**

## INTRODUCTION

Nigeria has not been spared by the HIV/AIDS pandemic. Since the first cases of AIDS were reported in Nigeria in 1986, various efforts have been made to assess the magnitude of the problem and to monitor its trends. Since the early 1990s, Nigeria has established an HIV sentinel surveillance system with the active collaboration of the World Health Organization. This system was meant to complement data generated from the AIDS Surveillance system due to the latter's limitations of under recognition, under-reporting and delayed reporting.

The first round of HIV sentinel surveillance in Nigeria was conducted in 1991 in 9 states. Subsequent surveys carried out in 1993 and in 1995 covered 17 states with 64 sentinel sites and 21 states with 84 sentinel sites respectively. The sentinel populations used in these surveys were pregnant women attending ante-natal clinics, patients with sexually transmitted diseases, patients with tuberculosis and female sex workers. Based on the results of these surveys, it was estimated that adult HIV prevalence was 1.8 percent in 1990, 3.8% in 1994 and 4.5% in 1995.

The facts sheet is an epidemiological leaflet containing the current trend of reported AIDS cases, previous HIV sentinel results and projections. It has been summarized to present as precise information as possible.

The purpose of the report is to publicize the current magnitude, trends and distribution of the HIV epidemic in Nigeria. It is hoped that this information will be useful for making policy and programmatic decisions by Federal and State governments, the private sector, non-governmental organizations, UN agencies, multilateral and bilateral donors, the media, and the general public for the prevention and control of HIV/AIDS in Nigeria.

**HIV/AIDS/STD SURVEILLANCE SHEET**  
**UPDATES ON AIDS STATISTICS IN NIGERIA**

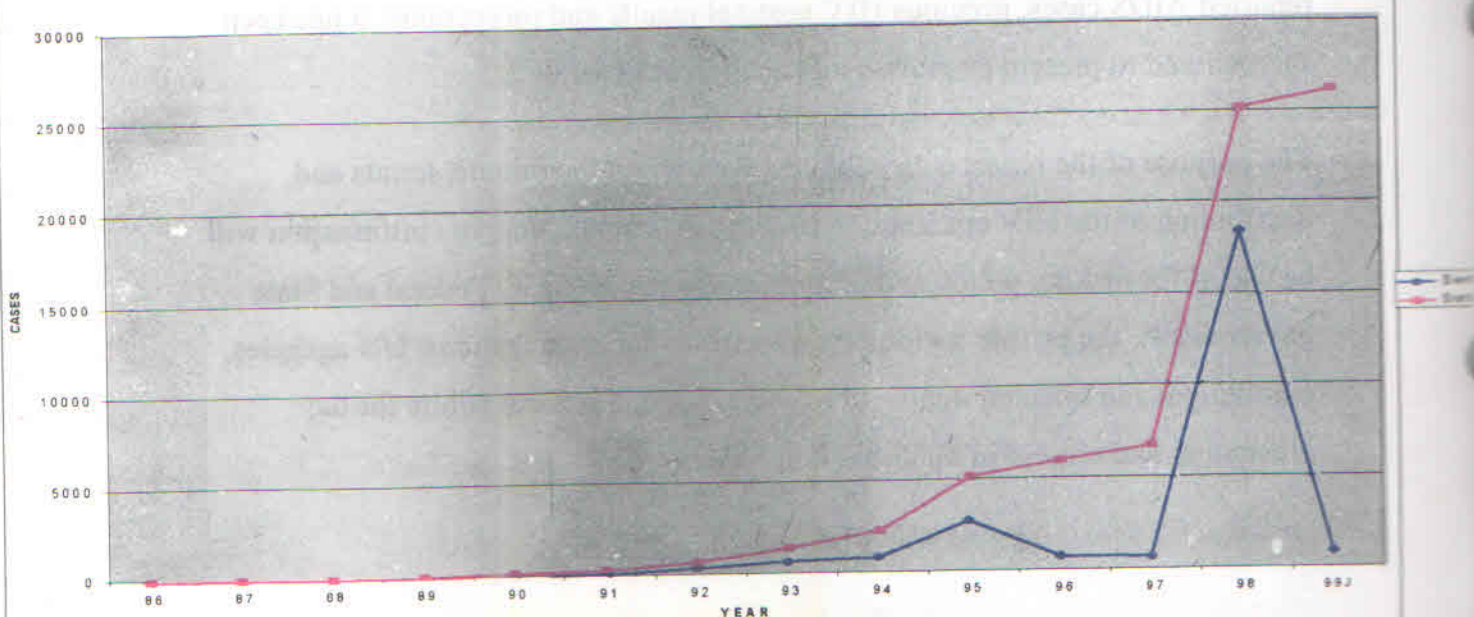
TABLE I

1. SUMMARY OF REPORTED AIDS CASES BY YEAR

YEAR	ANNUAL CASES	CUMMULATIVE CASES
1986	2	2
1987	2	4
1988	3	7
1989	52	59
1990	163	222
1991	129	351
1992	412	763
1993	719	1,482
1994	908	2,390
1995	2,829	5,219
1996	838	6,057
1997	745	6,802
1998 (June)	13,553	20,355
1998 (June -Dec)	4937	25,292
1999 (Jan - June)	984	26,276

This record contains cases passively reported only. The trend of increase is noticeable over the years. However, the reported cases are a gross understatement of the

TREND OF REPORTED AIDS CASES



The increased reporting trend in the 2 halves of 1998 of the first half of 1999 is a result of more active case surveillance built into the system recently to beef up AIDS-case-reporting nation-wide,

**TABLE 2.****PERCENTAGE AGE DISTRIBUTION OF  
REPORTED CASES 1986-1998**

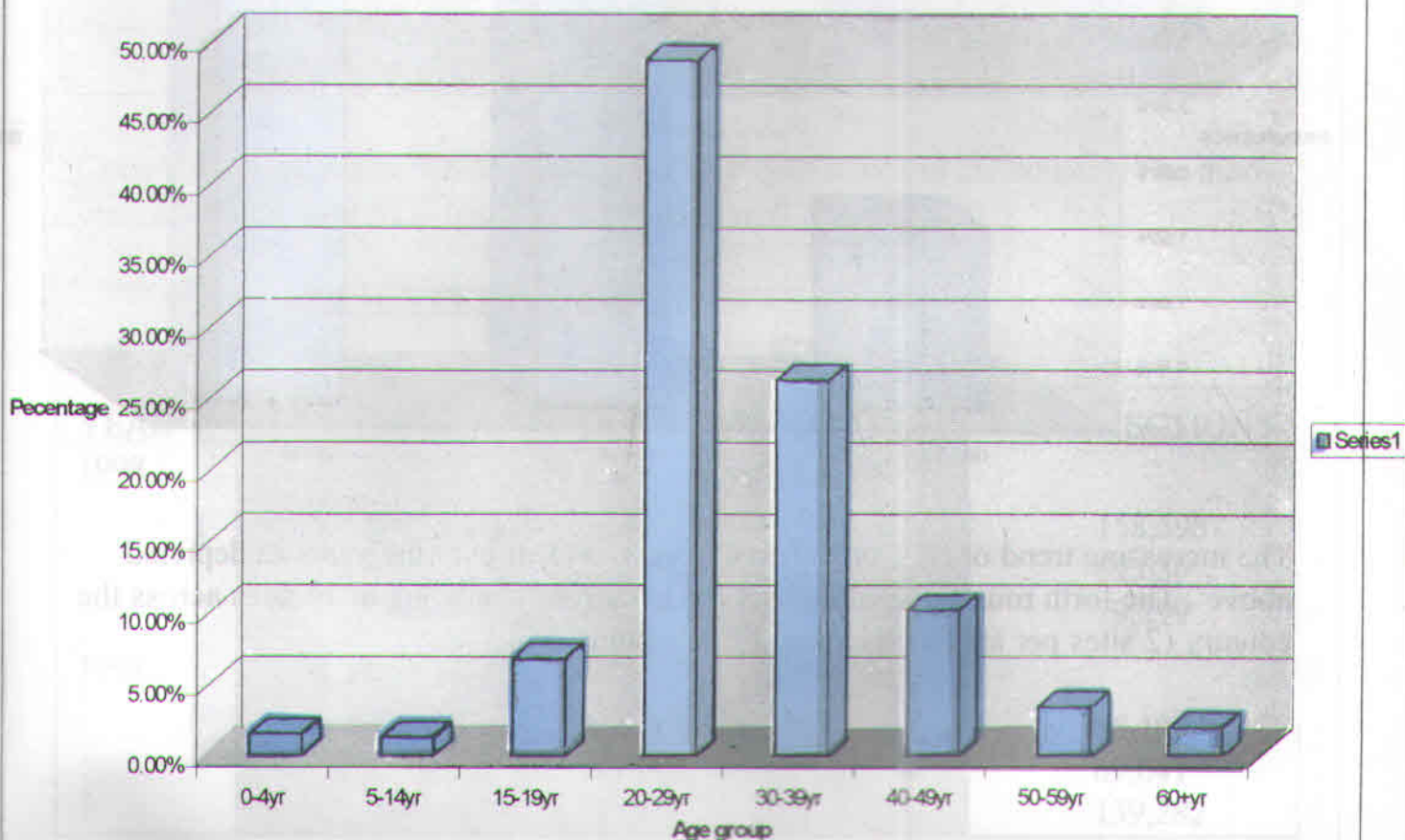
Age-groups	% Cases
0-4	1.5%
5-14	1.27%
15-19	6.76%
20-29	48.68%
30-39	26.24%
40-49	10.17%
50-59	3.41%
60+	1.97%
Total	100%

**TABLE 3 DISTRIBUTION OF CASE BY GENDER**

DATE	MALE	FEMALE	TOTAL
1986 -1988	5519	4,598	10,177 Cases

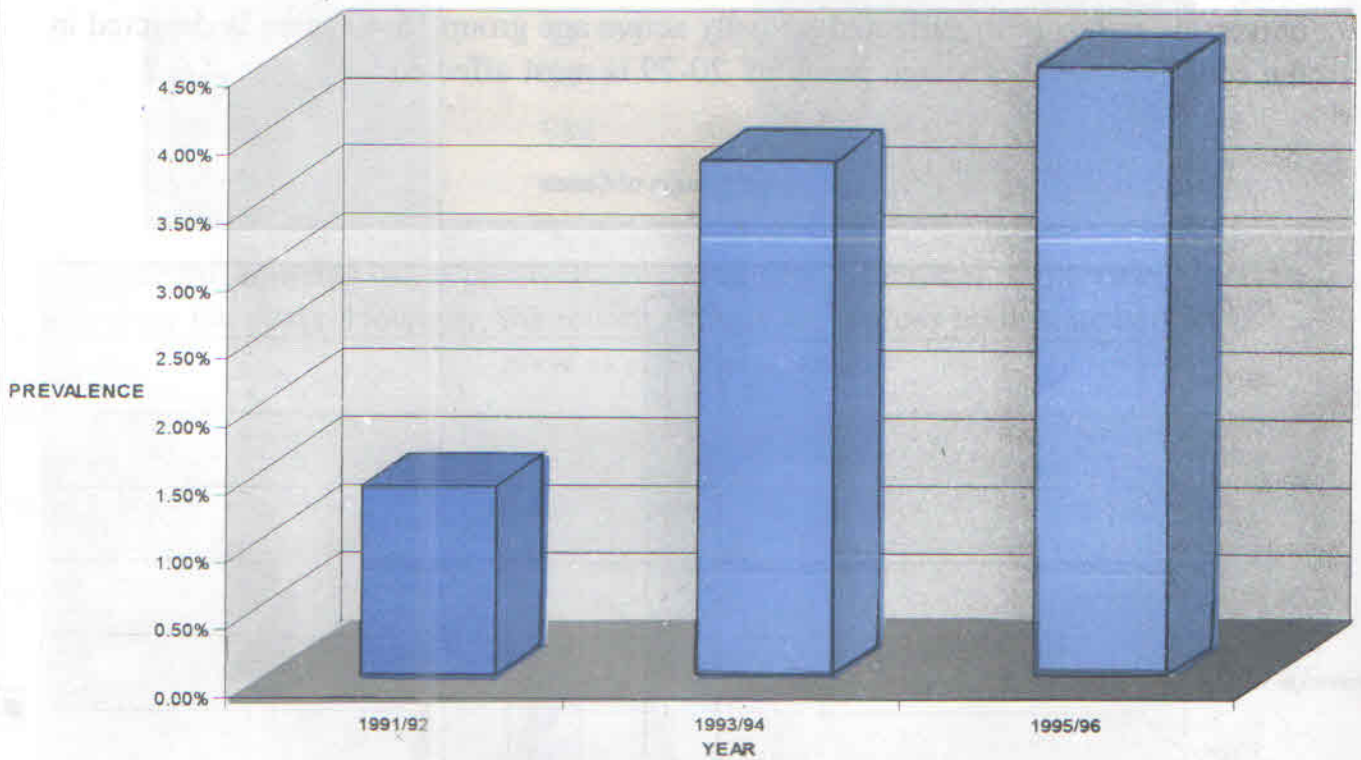
From the data reported to NASCP in the last 12 years, only 25% and 40% showed age and sex distribution patternm respectively.

Despite the fact that most of the data reported did not showed age distribution, the universal trends of the affected sexually active age group 15-49 years is depicted in the country as well. The age group of 20-29 is most affected.

**Age groups of Cases**

**TABLE 6. HIV INFECTION: NATIONAL TREND**

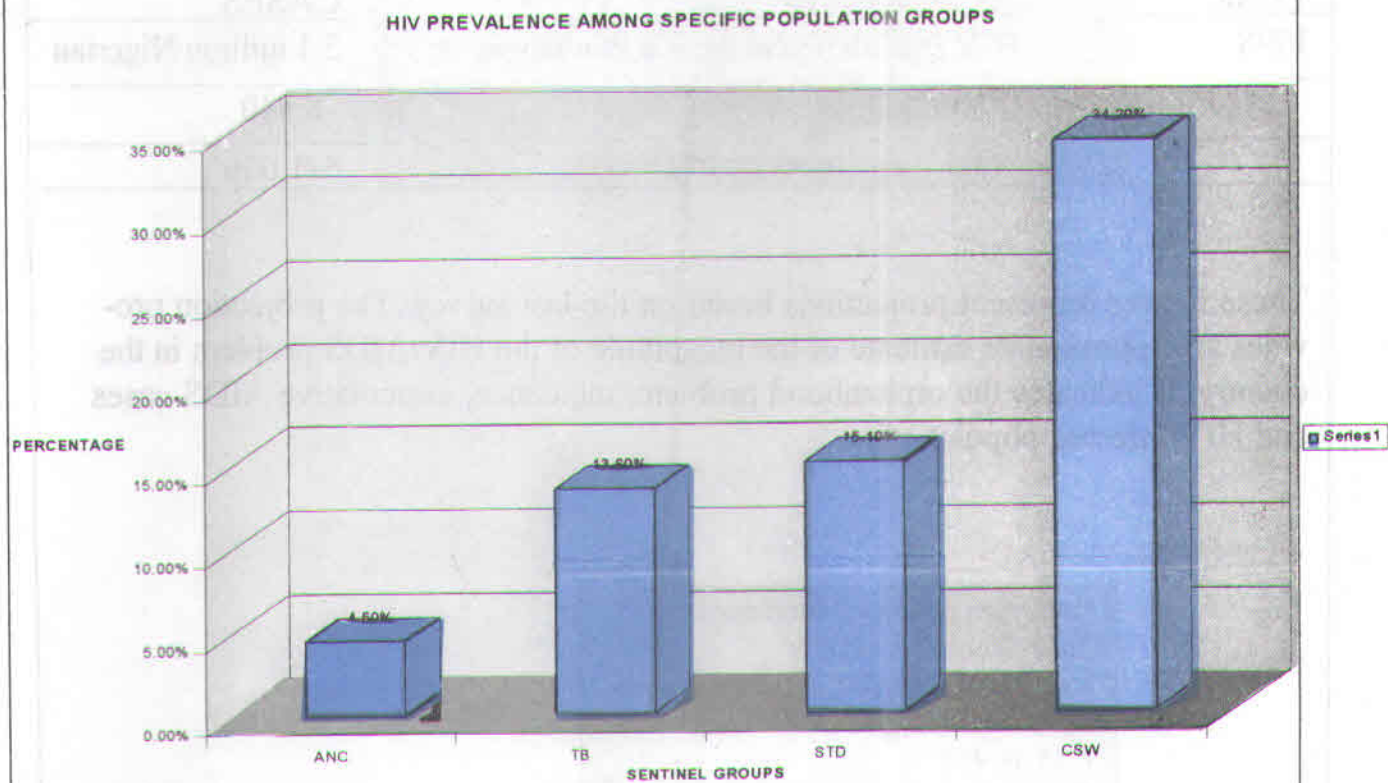
YEAR OF SURVEY	ADULT PREVALENCE	AGEGROUPS	NO. OF SURVEY SITES
1991/92	1.4%	15-49yrs	44
1993/94	3.8%	15-49yrs	68
1995/96	4.5%	15-49yrs	84
1999	on-going	15-49yrs	74

**TREND OF HIV SERO-PREVALENCE**

The increasing trend of HIV prevalence is very evident over the years as depicted above. The fourth round of Sentinel survey is currently ongoing in 74 sites across the country (2 sites per states including FCT, Abuja).

TABLE 7 NATIONAL PREVALENCE AMONG SPECIFIC SENTINEL GROUP

SENTINEL GROUPS	PREVALENCE
* Antenatal clinic attendees	4.5%
* Tuberculosis Patients	13.6%
* Sexually transmitted Diseases clinic attendees	15.1%
* Commercial sex workers	34.2%



Commercial sex workers have the highest HIV prevalence in the country. The association of HIV with STD and Tuberculosis is well demonstrated.

TABLE 8 UNAIDS PROJECTIONS

YEAR	DESCRIPTION OF CASES	PROJECTIONS
1998	<u>1. AIDS CASES</u>	
	* Adult AIDS cases	158,598
	* Children AIDS cases	55,636
1998	* New AIDS cases in Women	79,299
	<u>2. AIDS DEATHS</u>	
	* Paediatric AIDS death	55,107
	* Female AIDS death	69,641
	* Adult AIDS death	139,282

1998	<b>3. AIDS ORPHANS</b>	
	* Orphans by Parental AIDS death <15years	183,601
	* Cumulative AIDS orphan from 1986-1998	610,540

**TABLE 9 ESTIMATES OF HIV INFECTION IN THE GENERAL POPULATION**

YEAR	DESCRIPTION	CASES
1998.	HIV Prevalence in Active Population	3.1 million Nigerian
	Children infected	78,840
	Total New Infection in 1998	571,036

These figures represent projections based on the last survey. The projection provides an approximate estimate of the magnitude of the HIV/AIDS problem in the country. It indicates the orphanhood problem, incidence, cumulative AIDS cases and HIV infected population.

For further details, please contact  
 The National Coordinator  
 National AIDS/STD Control Programme  
 Federal Ministry of Health  
 P. M. B. 409  
 Garki - Abuja  
 Tel: 09-5238950-1  
 Fax: 09-5238950  
 E mail: [nsgwazo@abujanipost.com.ng](mailto:nsgwazo@abujanipost.com.ng)

