



**NIGERIA  
HEALTH  
WATCH**

Informed commentary, intelligence, and insights on the Nigerian health sector



**FROM EVIDENCE TO ACTION:  
BUILDING RESILIENCE AT THE  
CLIMATE-HEALTH NEXUS**

**REPORT:2024**



## TABLE OF CONTENT

Welcome Address	01
Impact Report Future of Health Conference:	02
Keynote Presentation	08
Keynote Address by Guest	09
Insights From National Vulnerability And Adaptation Assesment	10
Presenting the Green Manifesto	11
Panel 1: Addressing Climate Impacts on Nutrition and Food Security	12
Art in Action: Pot Half Full or Pot Half Empty	18
Fire Side Chat: Leveraging Multiplayer Collaborations For Pandemic Preparedness In The Context Of Climate Change In West Africa	19
Break Out Session 1: How Financing Can Advance Climate Change Actions	23
Break Out Session 2: Protecting mothers in a changing climate	27
Break Out Session 3: Building Climate-Resilient Health Systems: Knowledge Exchange for Policy, Practice and Partnership	32
Panel 2: Building Climate Resillient Health Systems For Global Health Security	37
Closing remarks	42
Impact Report Post Conference	43
Conference in Pictures	54
Meet Our Partners	55



## LIST OF ABBREVIATIONS

NCDC - Nigeria Centre for Disease Control

AMREF - African Medical and Research Foundation

NGO: Non-Governmental Organization

JLN - Joint Learning Network

CAP - Capstone flagship

PHC - Primary Health Care

WHO - World Health Organization

COP - Conference of the Parties

CSHS - Climate Smart Health Systems

NCDC: Nigeria Centre for Disease Control

VA: Vulnerability Assessment

COP26: 26th United Nations Climate Change Conference of the Parties

NTDs: Neglected Tropical Diseases

GCEP: Global Centre for Energy Policy

IDP: Internally Displaced Person

AO: Assessment Only

CEPI: Coalition for Epidemic Preparedness Innovations

SDGs - Sustainable Development Goals

One Health - A collaborative approach integrating human, animal, and environmental health

FAO - Food and Agriculture Organization

UNEP - United Nations Environment Programme

PHE - Population, Health, and Environment

AI - Artificial Intelligence

FCT - Federal Capital Territory

GDP - Gross Domestic Product



## WELCOME ADDRESS

**“Resilience is not built in isolation; it requires a multi-sectoral approach”**

**Vivianne Ihekweazu,**  
Managing Director of Nigeria Health Watch,



The 10th edition of the **Future of Health Conference** by Nigeria Health Watch marked a significant milestone in healthcare advocacy, bringing together diverse stakeholders to address critical issues.

This year's theme, ***“From Evidence to Action: Building Resilience at the Climate-Health Nexus,”*** emphasized the urgent need to tackle climate change's impact on health. Managing Director Vivianne Ihekweazu stressed, “Long gone are the debates about whether climate change is real; we now see its impact on every corner of our lives.” She highlighted the importance of resilience at the community level, tapping into local knowledge and addressing the needs of vulnerable populations, especially pregnant women.

The conference called for a multisectoral approach, integrating efforts from sectors like health, agriculture, education, energy, and environment, alongside contributions from federal, state, and local governments.

Civil society organizations were also recognized for their role in amplifying grassroots voices and fostering trust. Ihekweazu praised the youth's engagement, citing the pre-conference event where young people asserted,

**“Anything for us without us is not meant for us,”**  
underscoring the importance of involving youth in climate policies.

A Green Manifesto was presented, encapsulating these discussions and the perspectives of young leaders.

Reflecting on past conference milestones, Ihekweazu highlighted achievements from a decade such a promoting universal health coverage, leveraging digital technology for healthcare improvements, engaging the diaspora in strengthening healthcare, and advocating for gender equality and women's leadership in health. Partnerships with organizations like Facebook (now Meta) and initiatives like the Presidential Healthcare Value Chain further demonstrated the conference's impact.

In closing, Ihekweazu celebrated the collective efforts of over 4,000 participants in past conferences, stating, **“The future of health is a healthy environment, and we must preserve it for future generations.”** She urged attendees to network, collaborate, and transform conversations into action, emphasizing that tackling climate change and improving healthcare outcomes require collective commitment and shared solutions.

### Call to Action:

All sectors and communities must work collectively to address climate change's impacts on health, ensuring a healthier future.



# IMPACT REPORT

## Future of Health Conference

### Attendance and Participation

**1101**

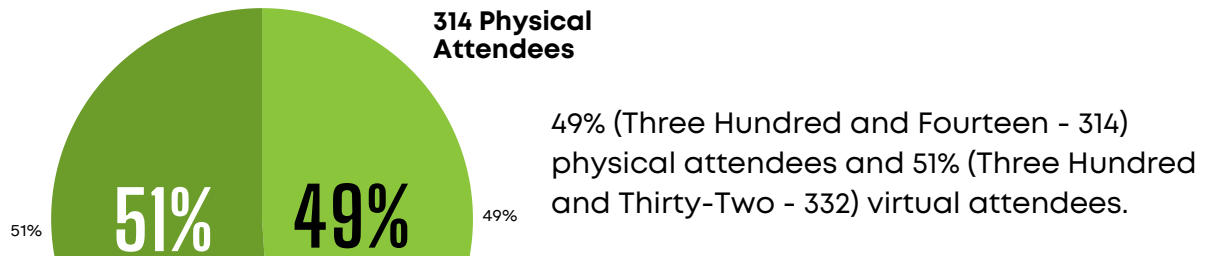
One Thousand One Hundred and One (1101) Participants registered to attend

**797**

Seven Hundred and Ninety-Seven (797) participants were confirmed to attend.

**646**

Six Hundred and Forty-Six (646) participants attended the Future of Health Conference 2024 event.

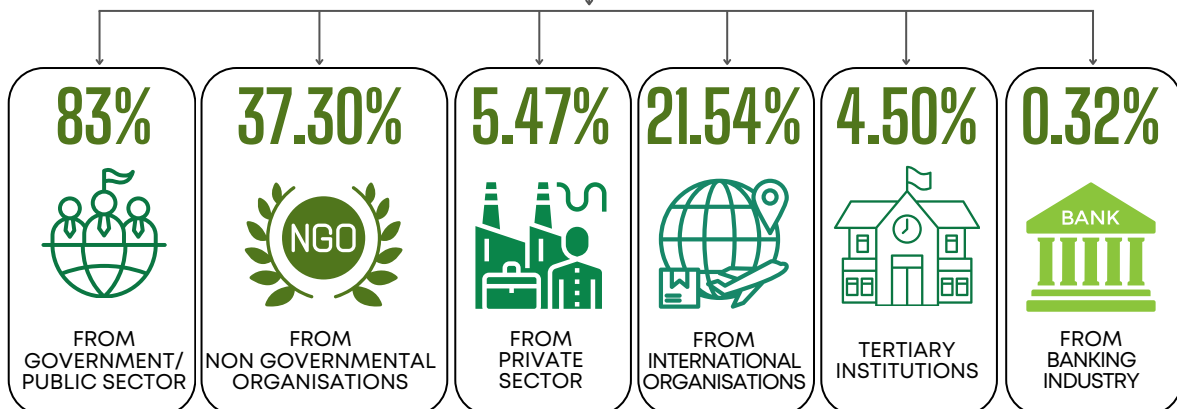


**332 Virtual Attendees**



**27.97%**

OF PHYSICAL ATTENDEES





**9**  
DIFFERENT  
COUNTRIES

Attendees represented Nine (9) different countries, including:



## Social Media (Pre-Conference)

Between May and November 30, 2024, the hashtag #ClimateHealthNexusNG, created specifically for the Future of Health Conference (FHC) 2024, generated approximately 18,000 engagements and over 111,000 impressions online. About 41% of these engagements and impressions were recorded between the announcement of FHC 2024 and October 23, the day before the conference. On the conference day, 25% of the total engagements and impressions were recorded, while the remaining 34% occurred between October 25 and November 30, 2024.

Between May and November 30, 2024,

**#ClimateHealthNexusNG**  
GENERATED

**18,000**



ENGAGEMENTS

**111,000**



IMPRESSIONS

**41%**

of engagements and impressions recorded between announcement and a day before the conference

**25%**

of total engagements and impressions recorded on the Conference day

**34%**

of engagements and impressions occurred between October 25 and November 30, 2024.

These metrics highlight the significant attention the Future of Health Conference 2024 attracted online, reflecting its success in highlighting the critical intersection of climate change and health.



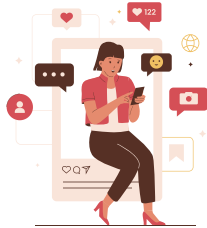
### key additional metrics:

26,241,833



Potential Impressions on all Social Media Platforms

111,367



Impressions on all Social Media Platforms

17,916



Engagements on all Social Media Platforms

3,709



Posts-reaction

3,453



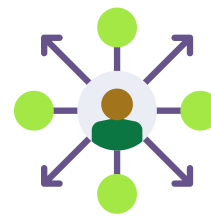
Promotional video views

Over 2,385



Posts on X (formerly Twitter) on pre-conference day

272



Average post reach

Impressions	Engagement	Engagement Rate (per impression)	Post Link Clicks
111,434	17,916	12.1%	5,448

**Top Posts**  
View the top tagged published posts from the publishing period.

Descending by Lifetime Engagements

**Nigeria Health Watch**  
The Future of Health Conference 2024: From Evidence to Action: Building Resilience at the Climate-Health Nexus. The 2024 Future of Health Conference took off with inspiring momentum as the youth...

**Nigeria Health Watch**  
Amplifying Youth Voices for Climate-Health Action: The impact of climate change on young people is profound, as they are among the most vulnerable to its long-term consequences. It threatens their...

**X @nighthealthwatch**  
Good News! Registration is now OPEN for the 10th edition of our Future of Health Conference 2024: <https://ln.co/0YVK76p3d> join us on 24 October in Abuja as we bring stakeholders together to map out...

10:02

For you Trending News Sports Entertainment Saved

**Nigeria trends**

**Bayern**  
449K posts  
1 UEFA Champions League - trending

**Maidi**  
254K posts  
2 Football - trending

**#Barekoma**  
101K posts  
3 trending in Football

**#ClimateHealthNexusNG**

2,20K posts  
4 trending

**IT IS DONE**  
119K posts  
5 trending

**Vivi**  
100K posts  
6 Football - trending

**#Rashkiba**

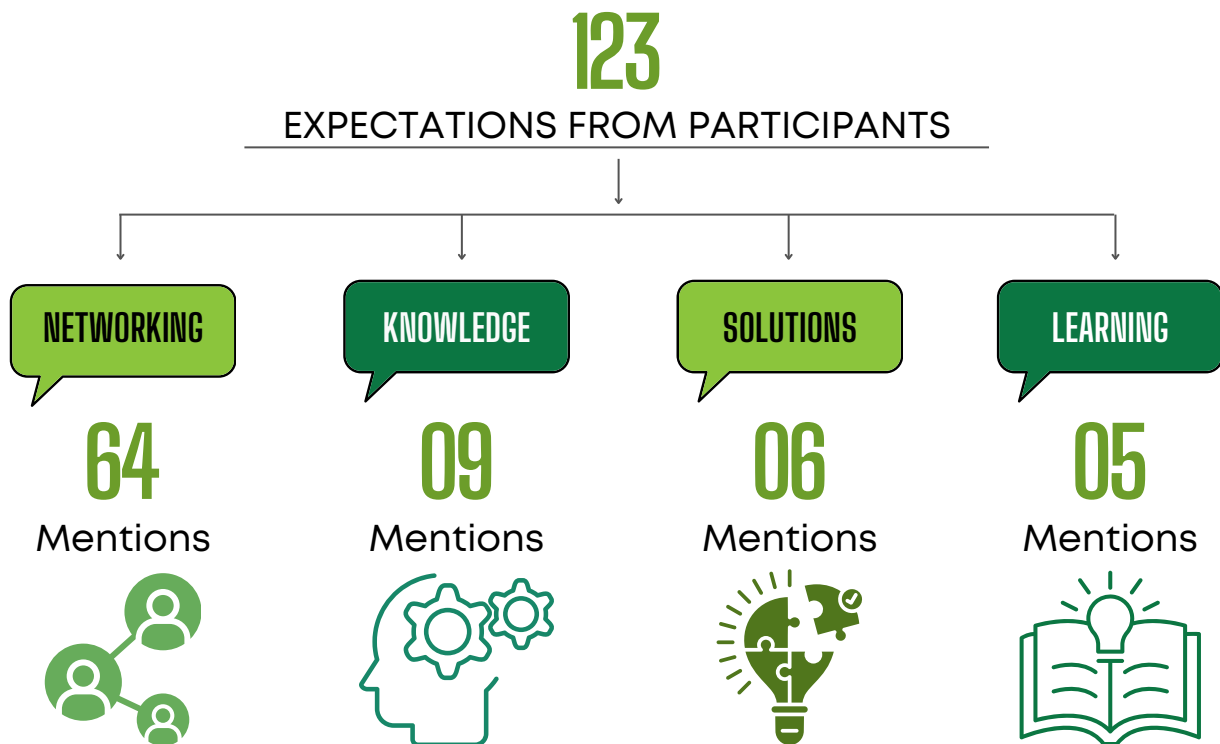


## Participants' Expectations

### What are your expectations of the Future of Health Conference 2024?

123 responses

One hundred twenty-three (123) expectations were recorded from participants at the start of the Future of Health Conference 2024, with networking being the most popular expectation, cited by 64 participants. Other prominent themes included knowledge (9 mentions), solutions (6 mentions), and learning (5 mentions).

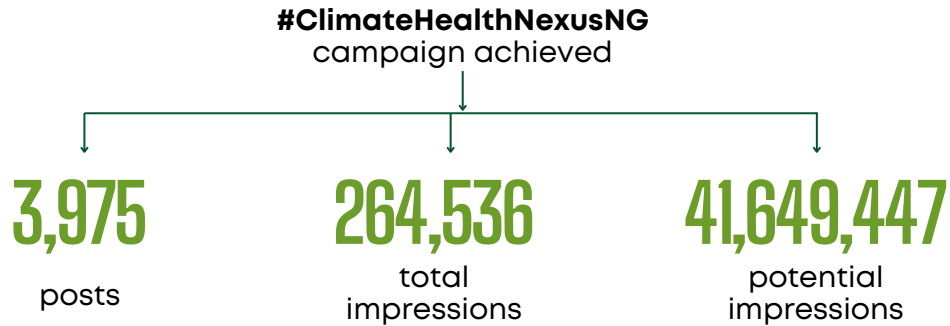


Additionally, participants expressed diverse expectations such as gaining new knowledge, driving actionable change, fostering collaboration, understanding climate change risks, and exploring innovative solutions, including telemedicine and climate financing.

Themes like sustainability, policy recommendations, integrated action, and technological advancements highlighted the participants' interest in leveraging the conference to build momentum, partnerships, and strategies to address climate-related health challenges.

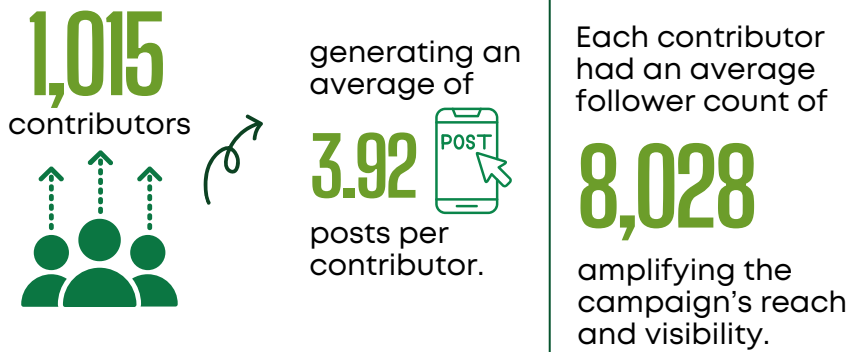


## Campaign and Trend Analysis of the #ClimateHealthNexusNG



FROM APRIL 22, 2024, TO NOVEMBER 27, 2024.

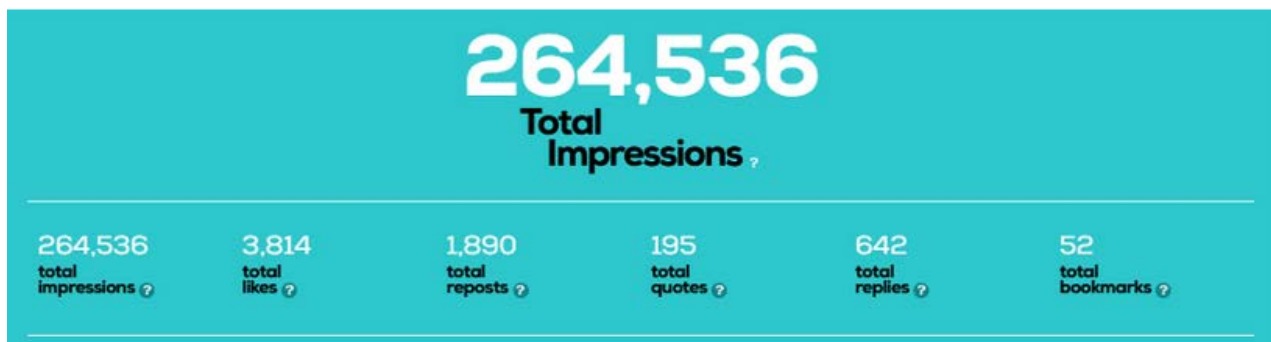
The campaign demonstrated the ability to mobilize a diverse audience and drive significant online engagement,



The primary hashtag, #ClimateHealthNexusNG, dominated but was supported by complementary hashtags like:

#FHC2024 —→ 1,027 posts

#Youths4ClimateActionsNG —→ 429 posts





## COMPERES:



**Onyedikachi Ewe**  
Senior Programme and  
Advocacy Manager,  
Nigeria Health Watch

**Emeka Oguanuo**  
Senior Partnerships  
Manager, Nigeria  
Health Watch

*"To secure our future, we must prioritize food security and climate resilience – because health begins with the environment we nurture today."*

*"In a nutshell, we are vulnerable. The fight against climate change is a journey we collectively need to accelerate progress."*



## KEY NOTE PRESENTATION



**Dr. Tamer Samah Rabie,**  
Global Program Lead for Climate and Health,  
World Bank

### Highlights from Dr. Tamer's Presentation

#### The Urgent Need for Climate Action:

- The climate crisis is a pressing issue with significant impacts on human health and well-being.
- Extreme weather events, such as floods and droughts, are becoming more frequent and severe.
- Vulnerable populations, particularly the poor, are disproportionately affected by climate change.

#### The Economic Cost of Inaction:

- Climate change poses a significant economic burden, with billions of dollars lost annually.
- The health sector is particularly vulnerable to the impacts of climate change.

#### The Role of the World Bank:

- The World Bank is committed to addressing the climate crisis and its impact on health.
- The bank is increasing its investments in climate and health initiatives.
- The bank is working to build climate resilience in health systems and promote sustainable practices.

#### Strategies for Addressing Climate and Health:

**Intersectoral Collaboration:** Fostering collaboration between health, environment, and other sectors.

*"We need to work together to ensure that we're rising up to the occasion and the responsibility that's ahead of us."*

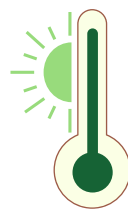
**Data-Driven Decision Making:** Using data to inform policy and investment decisions.

**Building Capacity:** Strengthening the capacity of health workers and institutions to address climate-related health risks.

**Innovative Financing:** Exploring innovative financing mechanisms to scale up climate and health initiatives.

**Community Engagement:** Engaging with communities to understand their needs and priorities.

By implementing these strategies, we can build a more resilient and sustainable future for all.



**2.5°C**

Global temperature increase by the century's end



**16 M**

Excess deaths by 2050 from climate-sensitive health risks



**132M**

People Potentially pushed into extreme poverty by 2030



**\$15 T**

Economic cost by 2050 representing around 3% of global GDP.



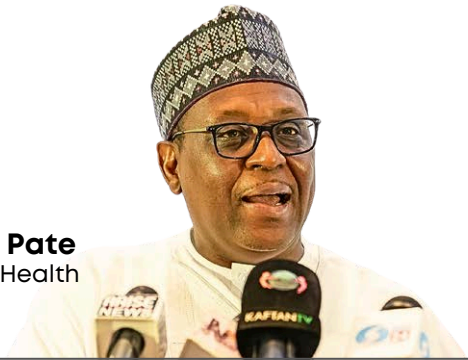
**4-5%**

Health sector's contribution to total global emissions



## KEYNOTE ADDRESS

**Prof. Muhammad Ali Pate**  
Coordinating Minister of Health  
and Social Welfare,



**“Adapting to the impact of climate change is a matter of social justice, because the folks that are being adversely affected by malnutrition, by being displaced...they've never enjoyed the things that generated the cause of climate change.”**

Prof. Muhammad Ali Pate, Nigeria's Coordinating Minister of Health and Social Welfare, opened by reflecting on the theme of the conference, emphasizing that the effects of climate change on health are not a future concern but a current reality.

### 1. The Problem

- **Climate and Health:** Climate change is no longer a future issue; its impacts are already here, with Nigeria facing severe challenges like rising temperatures, erratic rainfall, floods, and droughts.
- **Health Impacts:** Changing climates have led to unusual disease patterns, including malaria in December, dengue in Sokoto, and cholera outbreaks. Air pollution and food insecurity worsen non-communicable diseases and malnutrition.
- **Global Inequities:** Vulnerable populations, particularly in Nigeria, bear the brunt of climate change, despite contributing minimally to its causes.

### 2. What Is Being Done

- **Government Efforts:** The Health Sector Renewal Agenda focuses on governance, improving primary healthcare, transitioning to renewable energy (e.g., solarizing health facilities), and bolstering health security.
  - Quick mobilization during climate disasters, like flooding in Borno, has helped prevent disease outbreaks.

- **Global Partnerships:** Collaboration with organizations like the World Bank and USAID is strengthening healthcare systems and building climate resilience.

### 3. Call to Action

- **Localized Solutions:** Climate solutions must be tailored to local contexts, addressing the unique challenges of each community.
- **Social Justice:** Significant global resources are urgently needed to help vulnerable countries adapt to climate change.
- **Public Awareness:** Efforts should focus on educating citizens about climate impacts and empowering them to adapt.
- **Stronger Partnerships:** Constructive, multi-stakeholder collaborations are essential to bring expertise, resources, and local knowledge together.
- **Long-Term Global Support:** Development partners must remain committed to addressing climate-related health challenges in the long run.



## INSIGHTS FROM NATIONAL VULNERABILITY AND ADAPTATION ASSESSMENT

### Mr. Godwin Brooks

Director of Climate  
Change and Health,  
Federal Ministry of Health  
and Social Welfare



**"Climate change is  
not just an  
environmental issue,  
but a health crisis."**

Mr. Godwin Brooks provided a detailed overview of Nigeria's recent Vulnerability and Adaptation (V&A) Assessment. This comprehensive assessment, mandated under Nigeria's COP26 commitments, is the first of its kind for Nigeria's health sector and was conducted in coordination with the UK Government and World Health Organization (WHO). Brooks highlighted that the V&A's findings are extensive and crucial for shaping health sector resilience against the accelerating impacts of climate change.

The V&A revealed that climate change is set to increase health risks across all regions in Nigeria. Vulnerabilities are highest in the North East and North West, followed by the eastern and central zones, but no state is completely free from climate impacts. He emphasised that rising temperatures, increased rainfall, and more frequent flooding will lead to widespread public health challenges, including more vector-borne diseases and waterborne illnesses. The country is expected to experience an increase in the burden of non-communicable diseases, particularly cardiovascular and mental health issues, with severe impacts on food security and healthcare capacity.

Brooks urged cross-sector collaboration, noting that all ministries, civil society, and the private sector must work together to mitigate these effects. Under the leadership of the Coordinating Minister for Health, climate change has been integrated into Nigeria's Health Sector Blueprint, particularly under Pillar 4 on health security, with a focus on building health resilience and adapting facilities to future climate impacts.



Nigeria will see an estimated 21% increase in health burdens related to climate change



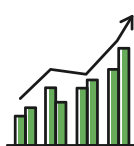
By 2080, heat-related mortality rates could rise by 2.5% to 5% per 100,000 people annually.



Average national rainfall is projected to increase from 1,065mm to potentially 1,075mm per year, with 800,000 individuals at risk from riverine flooding by 2030.



Sea levels could rise by 0.5 to 1 meter by the century's end, posing significant risks to coastal areas.



Mental health disorders are projected to rise from 2.6 million cases in 2020 to over 10 million by 2030.



TB cases may increase from 41,000 in 2020 to over 52,000 by 2030, while malaria and yellow fever rates are also expected to escalate.



## “WHAT DO YOUNG PEOPLE WANT?”

### Presenting the Green Manifesto

#### Godwin Lasisi

Founder, Interfaith Alliance for SDG Action Plan (IASAP).  
Youth Climate Activist



*“Yes, we talk about climate change, but what do you do when you go back home? What do you do when you go back to your villages and communities?”*

Godwin Lasisi presenting the green manifesto highlighted the crucial role of youth in climate change action and the significant impact of climate change on health, infrastructure, and communities in Africa, with a particular emphasis on Nigeria. He began by appreciating the support of Nigeria Health Watch, the World Bank, the Bill and Melinda Gates Foundation, and others in highlighting the need for youth voices in climate discussions. Lasisi pointed out that African youth, over 400 million strong, are driving positive change, despite Africa contributing only 4% of global carbon emissions yet bearing a disproportionate impact due to poor infrastructure and widespread poverty.

He noted how climate change aggravates existing vulnerabilities, with 63% of Nigerians being multidimensionally poor, which impairs resilience to climate shocks. The scarcity of clean water and poor sanitation exacerbate the issue, leading to health crises like cholera in underserved areas. Lasisi highlighted how essential community involvement is in tackling these issues, stressing that solutions must be locally led and supported.

### Recommendations from the Manifesto

- **Prioritize Youth Engagement:** Actively involve young people in decision-making processes and policy development.
- **Strengthen Health Systems:** Invest in building resilient health systems that can cope with the impacts of climate change
- **Promote Climate Education and Awareness:** Integrate climate change education into school curricula and community outreach programs.
- **Support Community-Based Initiatives:** Empower communities to take action on climate change by providing them with the necessary resources and support.
- **Advocate for Climate-Just Policies:** Advocate for policies that address the root causes of climate change and protect vulnerable populations.
- **Foster International Cooperation:** Collaborate with international partners to share best practices and mobilize resources for climate action in Africa.



# PANEL 1



## ADDRESSING CLIMATE IMPACTS ON NUTRITION AND FOOD SECURITY

<p><b>Safiya Shuaibu Isa</b> Deputy Director Advocacy and Partnerships, Nigeria Health Watch <b>Moderator</b></p>	<p><b>Ritgak Tilley-Gyado</b> Senior Health Specialist, World Bank</p>	<p><b>Honorable Sam Onuigbo</b> Former member, House of Representatives</p>	<p><b>Dr. Hussaini Abdu</b> Country Director CARE Nigeria.</p>	<p><b>Dr. Dolapo Fasawe</b> Mandate Secretary Health Service and Environment, Federal Capital Territory</p>
---	--	---	--	---

### INTRODUCTORY KEYNOTE



**Dr Dolapo Fasawe**  
Mandate Secretary  
Health Service and  
Environment. FCT

Dr. Dolapo Fasawe highlighted the critical nexus between climate change, health, and food security, urging stakeholders to move from discussions to actionable solutions. Below are the key points:

#### 1. The Problem

##### Climate Change's Health Impact:

- Rising air pollution contributes to severe health outcomes, such as heat strokes and respiratory diseases.
- Deforestation and urbanization worsen environmental conditions, leading to the spread of illnesses like "mysterious ailments" linked to heavy metal contamination.

- Shifts in weather patterns, desertification, and global warming exacerbate food insecurity, malnutrition, and poverty.

##### Food Insecurity:

- Adverse effects on food availability, affordability, and nutritional quality due to climate change (e.g., reduced iron, zinc, and protein in crops).
- Agriculture and livelihoods are at risk as land becomes less fertile and extreme weather disrupts farming.

#### 2. What Is Being Done

##### Innovative Government Initiatives:

- Establishment of a climate change desk in the Federal Ministry of Health.
- FCT Secretariat's Renewed Hope Medical Outreach, which includes a nutrition stand to educate women on the importance of good nutrition.

##### Youth Involvement:

- Commendation of the inclusion of youth voices in the climate-health discussion through a youth conference.



### 3. Call to Action

#### Climate-Smart Practices:

- Investment in research on climate-smart agriculture to improve food security and nutrition.
- Adoption of sustainable farming methods and increasing community resilience to climate challenges.

#### Education and Awareness:

- Teach farmers and communities about the impact of climate change and provide social protection programs.
- Promote environmental sustainability by planting trees and vegetation to reduce carbon footprints.

#### Actionable Solutions:

- Focus on tangible, measurable projects that improve health and food systems, ensuring resilience against climate change impacts.

### Closing

Dr. Fasawe urged participants to take decisive actions to address climate change's effects on health and food systems. She emphasized the need for partnerships and deliberate efforts to foster resilience and sustainable development.

*“Let us ensure that we provide actionable outcomes, outcomes that will improve the resilience of our health and food systems.”*



**Honorable Sam Onuigbo**  
Former member,  
House of  
Representatives



*“All hands must be on deck for us to secure food security, before you start talking about nutrition.”*

### 1. Climate Change as a Cross-Cutting Issue

- Climate change impacts multiple sectors, such as health, agriculture, mining, and water resources, necessitating a holistic and coordinated approach to tackling its effects.

### 2. Legislative Journey of the Climate Change Act

- Climate change legislation faced significant challenges in Nigeria, failing in previous assemblies before finally passing in the Ninth Assembly.
- The Climate Change Act is designed to guide ministries, departments, and agencies (MDAs) in addressing climate issues systematically.

### 3. Key Provisions of the Climate Change Act

- National Council on Climate Change: Chaired by the President with the Vice President as the Vice Chairman.
- Includes relevant ministers (environment, agriculture, mines, etc.).
- Climate Change Desk in MDAs: Mandated by Section 22 of the Act, every ministry and agency must establish a climate change desk led by a director-level officer to ensure alignment with climate goals and adequate resource allocation.



#### 4. Focus Areas of the Act

- **Vulnerability Assessments:** Required to understand the impacts of climate change across sectors, including food security, water, and health.
- **Holistic Approach:** Emphasizes the integration of various sectors to address climate impacts comprehensively.

#### 5. Constitutional Basis for Environmental Protection

- Section 20 of the Nigerian Constitution underscores the importance of preserving the environment for clean air, water, and land, aligning with the Climate Change Act's objectives.

#### 6. Urgency for Action

- Climate change threatens food security, nutrition, and survival, especially for vulnerable populations. Coordinated efforts are essential to mitigate these impacts and foster resilience.

In conclusion, Hon. Sam called for collective responsibility and full implementation of the Climate Change Act to ensure food security, environmental sustainability, and national resilience against climate threats.

#### *Action Points*

1. Strengthen climate governance by involving sub-national entities, including state and local government representatives, in climate action.
2. Enhance public awareness on climate change impacts and nutrition, with an emphasis on rural communities.
3. Engage youth in climate initiatives, incorporating their perspectives and energy into policy action.
4. Integrate climate change education into school curricula across all levels to promote climate literacy.
5. Coordinate across sectors like health, agriculture, and water to tackle the climate-nutrition nexus effectively.



**Dr. Hussaini Abdu**  
Country Director  
CARE Nigeria.



*"We can't make any major impact without involving the real people in the communities where the real activities are taking place."*

### Key Takeaways

#### 1. Connection Between Climate Change, Nutrition, and Health

- A clear and significant nexus exists between these three areas, which must not be overlooked.
- Climate change exacerbates Nigeria's ongoing nutrition crisis through its effects on food production and displacement.

#### 2. Longstanding Nutrition Crisis in Nigeria

- Historical data, such as the National Demographic and Health Survey, shows a persistent nutrition crisis.
- Contributing factors include cultural norms, structural issues, and climate shifts over time.

#### 3. Impact of Humanitarian Situations on Nutrition

- Conflict and violence, particularly in the North East and North West, escalate nutritional challenges.
- Displacement, whether physical or psychosocial, disrupts production systems and daily routines, disproportionately affecting vulnerable groups, especially children and pregnant or lactating women.

#### 4. Vulnerability Assessments as a Vital Tool

- These assessments provide insights into regional and national trends, enabling targeted and effective responses to nutrition challenges.

#### 5. Need for Community Engagement

- Sustainable impact requires involving local communities in program design and implementation.
- Ignoring community involvement undermines the effectiveness of policies and interventions.

#### 6. Regional Variations in Crisis Manifestation

- The nutrition crisis affects all regions differently, but no region is entirely immune.
- Tailored approaches are necessary to address specific regional challenges effectively.

In summary, Dr. Hussaini emphasized the deep connections between climate change, nutrition, and health, the persistent nature of Nigeria's nutrition crisis, and the importance of using vulnerability assessments and community-centered approaches to design and implement effective interventions.

### Action Points

1. Adopt climate-smart and resilient approaches that include new technologies and substantial investments.

2. Strengthen stakeholder coordination across government, private sector, civil society, and farming communities.

3. Promote gender inclusivity by enhancing women's access to resources and decision-making in agriculture.

4. Evaluate traditional norms to identify practices that support resilience and adapt those that hinder climate-smart methods.

5. Enhance climate information dissemination using accessible, community-based channels like extension services and local information sessions.



**Ritgak  
Tilley-Gyado**  
Senior Health  
Specialist,  
World Bank



*"As much as we're investing now, we could see a rollback if we're not tackling the climate aspect of this."*

### Key Takeaways

#### 1. The Dual Nature of Malnutrition in Nigeria:

- Chronic malnutrition (e.g., high stunting prevalence of 40%) and acute malnutrition (exacerbated by floods and displacement) coexist, creating an "acute-on-chronic" burden.
- Rising temperatures significantly impact chronic malnutrition, with a 1°C increase associated with a 45% rise in stunting.

#### 2. Nutrition and Climate Interconnection:

- Climate change exacerbates malnutrition through its effects on food systems, health systems, and social protection systems.
- Tackling malnutrition requires integrating climate-smart solutions into these systems.

#### 3. Health Systems:

- Focus on primary health care to address diseases worsened by climate change (e.g., malaria, diarrhea) that create a vicious cycle with malnutrition.

#### 4. Food Systems:

- Employ climate-smart agricultural techniques like agroforestry, drought-resistant crop varieties, and improved irrigation systems.

- Strengthen data-driven approaches, such as early warning systems, to better inform farmers about weather patterns and mitigate farming disruptions.

#### 5. Policy and Behavior Change:

- Nutrition policies should explicitly incorporate climate-smart measures, and climate plans must include nutrition as a key objective.
- Food security doesn't guarantee improved nutrition—emphasis is needed on behavior change, household decisions, and access to diverse diets.

#### 6. Adapting to Farming Challenges:

- Unpredictable weather patterns, such as dry spells followed by floods, highlight the need for resilient farming practices and support systems.

#### 7. Community Involvement:

- Bridging the gap between food production and nutritional outcomes requires community engagement to promote diverse and balanced diets.

### Action Points

1. Increase climate financing through both government budgets and development partner contributions.

2. Enhance project bankability by ensuring climate initiatives meet adaptation or mitigation standards and are technically sound.

3. Support smallholder farmers and SMEs through the Climate Fund Accelerator to develop finance-ready projects.

4. Align sectoral budgets with climate and agricultural plans at national and sub-national levels.

5. Implement resource tracking to identify financing gaps, secure additional funding, and ensure accountability.



**Question 1**  
**Adanna Mbojikwe**

What measures are in place to track and ensure transparency in climate change funding in Nigeria, and how are we preventing corruption to guarantee that allocated resources effectively support climate action and secure the intended future benefits?

**Honorable Sam**  
**Former member, House of Representatives**

Honorable Sam addressed concerns about managing climate funds, noting the growing interest in securing financing for climate initiatives. He highlighted Section 15 of the Climate Change Act, which includes provisions to coordinate and monitor these funds. The National Council on Climate Change, chaired by the President, centralizes oversight to enhance accountability. Hon. Sam expressed hope that these safeguards will prove sufficient but noted the Act could be reviewed if issues arise.

**Question 2**  
**David Agunlofi**

How can we balance the immediate nutrition needs with long term sustainable food production, especially in regions where climate change is already severely affecting food crops?

**Dr Hussaini Abdu**  
**Country Director CARE Nigeria.**

To address immediate and long-term challenges, we need to strengthen a sustainable food system by transforming agriculture to be more climate-smart and resilient. While working toward this, immediate responses, like emergency aid, are essential to manage the current crisis. Nigeria has promising policy frameworks, though former President Obasanjo once remarked that the country often fails to implement them effectively. The focus should be on building upon these policies to create a more resilient, climate-friendly agriculture sector.

**Question 3**  
**Fahad Lawal**

What are the measures and policies that are currently available to address the grass root health impact that we have as a result of this climate change.

**Dr Tilley-Gyado**  
**Senior Health Specialist, World Bank**

We just launched a new country strategy called "Leading Locally, Connecting Globally for Impact," focusing on locally led leadership and delivery while connecting with global resources for deeper impact. Our work involves strong partnerships with local organizations, supported by mechanisms to ensure effective delivery. Recently, the National Economic Council approved the Nutrition 774 initiative, also endorsed by the National Council on Nutrition. This initiative includes health and food systems elements, targeting local governments across all 774 areas, with a focus on homestead gardens and locally sourced therapeutic foods to achieve scale and meaningful outcomes.



## ART IN ACTION

### *Pot Half Full or Pot Half Empty*

#### **Polly Alakija**

Culture Meets Social Development and Founder  
Five Cowries Arts Education Initiative



*"Why would I say Pot half empty? Because of the crisis upon us... But why half full? The reason why half full is it's not rocket science; community-owned, community-driven solutions—often very simple—are going to make a great difference."*

#### **KEY POINTS:**

##### **1. Art as Advocacy:**

Polly uses art and culture to advocate for critical issues like water security and health through her NGO, Five Cowries Arts Education Initiative.

##### **2. Water as a Central Issue:**

- Water security is vital but under threat in Nigeria due to population growth, climate change, and poor infrastructure.
- Nigerians use far less water daily than people in Europe, yet total water needs for food production and living far exceed these amounts.

##### **3. Relatability and Community Impact:**

- Water issues are deeply relatable, affecting daily life and hygiene. However, communities face broken taps, contaminated water, and falling water tables, making solutions urgent.

##### **4. Challenges and Solutions:**

- Substandard water infrastructure is a major issue. Affordable, community-owned solutions offer the most promise for sustainable change.

##### **5. Environmental Concerns:**

- Nigeria's population is set to double by 2050, exacerbating resource pressures. Deforestation and overuse of concrete further harm the environment and water security.

##### **6. The Role of Storytelling:**

- Polly uses stories, such as children imagining elephants taking bucket baths, to highlight the limitations and inspire dialogue about water solutions

##### **7. "Pot Half Empty, Pot Half Full" Philosophy:**

- While data shows a crisis, Polly remains optimistic that simple, community-driven solutions can make a difference.
- She calls for "landscape-based thinking" to connect resources and actions for holistic solutions.

##### **Call to Action:**

Polly urges everyone to contribute creatively, using their skills to join the fight for sustainable solutions: "Pick up your brush, pick up your pencil, and let's do it."



# FIRESIDE CHAT



## LEVERAGING MULTIPLAYER COLLABORATIONS FOR PANDEMIC PREPAREDNESS IN THE CONTEXT OF CLIMATE CHANGE IN WEST AFRICA

### Oyeronke Oyebanji

Head of Lassa Engagement, Coalition for Epidemic Preparedness Innovations, Coalition for Epidemic Preparedness Innovations (CEPI)

### Dr Julius S.M Gilayeneh

Deputy Director General, Technical Service/Chief Scientist, National Public Health Institute of Liberia

### Mrs Elsie Illori

Former Director of Surveillance, Nigeria Centre for Disease Control

### Oyeronke Oyebanji

Head of Lassa Engagement, Coalition for Epidemic Preparedness Innovations (CEPI)



Oyeronke congratulated Nigeria Health Watch on a decade of impactful work, sharing how the Future of Health conference fueled her own career in public health. She noted the importance of ongoing youth engagement in these conversations.

She highlighted Coalition for Epidemic Preparedness Innovations (CEPI's) focus on developing vaccines for "climate-sensitive pathogens" like Lassa fever, Ebola, and COVID-19.

### TWO MAIN GOALS OF THE FIRE SIDE CHAT:

**01** Examining how climate change influences the spread of infectious diseases

**02** Ways to move from ideas to actionable collaborations to combat these disease threats amid a changing climate.



**Mrs Elsie Illori**

Former Director of Surveillance,  
Nigeria Centre for Disease Control

*“We need to look deeper into the relationship between climate change and health, especially the infectious diseases we’re experiencing now.”*

## HIGHLIGHTS

### 1. Increased Lassa Fever Cases:

- Historically, Lassa fever cases were reported from December to April during the dry season.
- Since 2019, Lassa fever has been reported year-round, with 2023 recording the highest number of confirmed cases.

### 2. Impact of Climate Change:

- The shift in Lassa fever trends is attributed to climate change, which has altered disease patterns and extended the transmission season.

### 3. Emerging and Re-emerging Diseases:

- Diseases like diphtheria and pertussis, once thought to be under control, are now resurfacing, indicating a broader shift in infectious disease dynamics.

### 4. Call for Research:

- Mrs. Illori emphasizes the need for deeper investigation into the relationship between climate change and the resurgence of infectious diseases.

*“If you don't have good food security, and your environment is not clean, you're vulnerable to disease outbreaks.”*

## KEY POINTS

### Intersectoral Collaboration:

Mrs Illori emphasized the importance of collaboration between health, agriculture, and environment sectors.

### One Health Approach:

She highlighted the successful application of the One Health approach in addressing Lassa fever outbreaks.

### Community Engagement:

She stressed the significance of involving communities in health initiatives.

### Integrated Approach:

She advocated for an integrated approach to address issues like food security, environmental health, and disease prevention.



HIGHEST NUMBER OF  
LASSA FEVER CASES  
RECORDED: 2023



OVER 50 YEARS SINCE  
LASSA FEVER WAS  
DISCOVERED



REPORTS OF LASSA FEVER  
YEAR-ROUND SINCE 2019



**Dr Julius S.M  
Gilayeneh**

Deputy Director  
General, Technical  
Service/Chief Scientist,  
National Public Health  
Institute of Liberia



*“We should not only talk the talk, but we should walk the walk by advocating our respective governments and institutions to invest resources to support regional collaborations and partnerships to address some of these limitations and gaps that exist in these regions.”*

**HIGHLIGHTS**

**Community Engagement:**

Emphasized the importance of involving communities in epidemic preparedness and response.

**Rapid Vaccine and Therapeutic Development:**

Highlighted the success of CEPI in developing COVID-19 vaccines within a short timeframe.

**Addressing Vaccine Hesitancy:**

Stressed the need to inform and engage communities to overcome vaccine hesitancy.

**Targeted Collaborations:**

Advocated for focused collaborations within specific regions to address shared public health challenges.

**African Leadership:**

Called for African countries and institutions to play a more active role in supporting regional collaborations and investing in public health research.

**Roles multi-sectoral collaboration plays in accelerating vaccine development.**

**KEY POINTS.**

**Community Engagement:**

The importance of involving communities in health initiatives, especially in epidemic preparedness and response.

**Rapid Vaccine and Therapeutic Development:**

The potential for rapid development of vaccines and therapeutics, as demonstrated by the CEPI initiative during the COVID-19 pandemic.

**Addressing Vaccine Hesitancy:**

The need to address vaccine hesitancy through effective communication and engagement with communities.

**Targeted Collaboration:**

The importance of focused collaborations within specific regions to address shared public health challenges.

**African Leadership:**

The role of African countries and institutions in driving regional collaboration and investing in public health research.

*“The communities play a very critical role in epidemic preparedness and response.”*



**Question 1  
Dr Ogunniyi:**

Building on experiences from Liberia's Lassa fever response and other outbreaks, what recommendations do you have for effective regional collaboration and capacity building to prevent and manage future health crises?

**Dr. Julius  
Deputy Director General, Technical Service/Chief Scientist,  
National Public Health Institute of Liberia**

Dr. Julius stressed the need for regional collaboration to handle health crises, citing post-EVD partnerships among Liberia, Guinea, Sierra Leone, and Nigeria. He highlighted the use of existing surveillance systems in Liberia to track disease trends and adjust responses, especially for Lassa fever. Additionally, Liberia has enhanced research and diagnostic capacity, including setting up genomic sequencing and working with Nigeria CDC to analyze monkeypox samples.

**Question 2  
Participant**

What climate-related trends has the NCDC identified in Lassa fever outbreaks since 2019, and what factors contribute to these changes and is the NCDC working on decentralizing testing or establishing regional laboratories to reduce diagnosis delays, especially for remote areas?

**Mrs. Ilori  
Former Director of Surveillance, Nigeria Centre for  
Disease Control**

Mrs. Ilori explained that, historically, limited awareness of Lassa fever symptoms led to outbreaks in communities, as people often mistook it for malaria. To address this, the NCDC increased community engagement and event-based surveillance, collaborating with the Ministry of Information and other stakeholders. They also used the "TATAFO" application, which mines social media and print media for reports on potential cases.

On the laboratory front, Mrs. Ilori noted that COVID-19 boosted Nigeria's testing infrastructure, enabling molecular labs in most states. Now, regional labs, such as those in Bauchi and Kano, can test for Lassa fever, reducing the need to send samples to Abuja and speeding up diagnosis for remote areas.



## BREAKOUT SESSION 1



THE WORLD BANK  
IBRD • IDA | WORLD BANK GROUP

### HOW FINANCING CAN ADVANCE CLIMATE CHANGE ACTIONS



**Dr Olumide Okunola**  
Senior Health Specialist  
World Bank

**Jessica Flannery**  
Senior Public Health Consultant, Health, Climate,  
Environment and Disasters (HCED) Program, Health,  
Nutrition and Population (HNP) Global Practice,  
World Bank

### KEYNOTE ADDRESS

Mr. Olumide summarized the anchor presentation into three key points:

#### 1. Health Sector Reforms Progress:

Over the past decade, Nigeria has undergone substantial health system reforms, starting with the National Health Act and initiatives like the "Saving 1 Million Lives" program. The reform aimed to unify government efforts across all levels but faced challenges in funding and implementation, especially at the state level.

#### 2. Current Reforms and the Compact:

The current wave of reform, reinforced by a new compact signed by government and development partners, focuses on enhancing Primary Health Care (PHC) facilities, ensuring they meet essential care standards, and addressing structural and operational deficiencies.

#### 3. Financing for Climate Action and Health:

Through collaboration with the World Bank and other partners, Nigeria now has close to a billion dollars in financing to support health sector advancements, including climate-responsive health initiatives. This funding, structured as "program for results," incentivizes states to meet specific criteria in PHC improvement and climate-related health actions.

*"Climate change is really going to be a risk multiplier for the health outcomes that Hope PHC is working on and make them much worse over time, so it was essential throughout the DLIs and the health system to integrate climate change."*

**Jessica Flannery** discussed the integration of climate resilience in Nigeria's health sector through specific Disbursement Linked Indicators (DLIs) in the World Bank-supported Hope PHC program. She emphasized that climate change will worsen health outcomes and thus needs to be addressed in the health system. Key DLIs include infrastructure upgrades with climate resilience, energy efficiency standards, and the development and implementation of climate adaptation and emergency response plans (DLIs 9 and 10). These measures aim to strengthen health system resilience and support climate mitigation while advancing climate and health actions.



**Dr Olumide Okunola**  
Senior Health Specialist  
World Bank

**Dr Zara Shubber**  
Senior Health Specialist,  
Global Climate Health  
Program, World Bank

**Godwin Brooks**  
Director of Climate  
Change,  
Federal Ministry of  
Health, Nigeria

**Dave Mc Conalogue**  
Head of Health,  
Foreign, Commonwealth  
and Development Office  
(FCDO) Nigeria

The session highlighted Nigeria's drive to integrate climate resilience into the health sector, emphasizing coordinated financing, state-federal alignment, youth engagement, capacity building, and innovative health solutions.

### 1. Funding and Health Sector Reform in Nigeria:

- Additional financing is arriving through the Global Financing Facility (GFF).
- Motivation for the funding includes the opportunity for health sector reform in Nigeria and the leadership shown by the coordinating minister.
- The sector-wide approach aims to reduce fragmentation, integrate climate into health, and use government systems for resource allocation.

### 3. Youth and Private Sector Involvement:

- Youth-led startups and private sector engagement are encouraged, with the DLI 11 supporting digital infrastructure for health innovation.
- The private sector is advised to collaborate with the climate change and health secretariat to access funding.

### 5. Future Steps:

- Plans to establish joint learning networks for state climate officers and enhance collaboration for effective climate and health action.
- The goal is to achieve universal health coverage while addressing climate and pandemic preparedness.

### 2. Integration of Climate and Health Initiatives:

- Emphasis on coordinated financing for climate and health integration, avoiding separate programs.
- Development banks and global funds (e.g., Global Fund, Green Climate Fund) are aligning efforts and frameworks to support health and climate initiatives.

### 4. Federal and State Collaboration in Nigeria:

- National Health Sector Adaptation Plan (HSNAP) is being developed, with plans to cascade it to states by March 2025.
- Each state now has a designated desk officer for climate change and health.
- Federal Ministry of Health seeks state adoption of national guidelines to unlock financing and drive implementation.



*Dave: "This was our toe in the water, really... to test that system, but large enough that you can see an impact from it. We are big believers in the impact of climate change on health and having health firmly at the center of disbursement-linked indicators made that argument very easy. This is only the beginning."*



*Dr Okunola: "Almost \$2 billion to address maternal mortality, newborn mortality, amongst other things... climate is not about climate policy. It is about how do you develop interventions and actions to support the health system, while taking into consideration how climate intensifies those things."*



*Mr Brooks: "The youth are already champions of this message of climate change and health. After the launch of the H-SNAP, interventions will come out, and definitely the youth will have a part to play in climate change and health space."*



*Zara: "'As an example, as development banks, we came together a year ago, just before COP and developed a joint roadmap for climate, health, finance and action, of which one of them was very, very focused on mobilizing synergistic financing that's aligned with the country's needs around health systems, and working very closely, for example, with the Global Fund, the Green Climate Fund and others."*



## ADDITIONAL INSIGHTS FROM EXPERTS



**Desta Lakew**  
Group Director of Partnerships and External Affairs, AMREF Health Africa

**AMREF's Role:** AMREF is hosting the Joint Learning Network (JLN), focusing on fostering collaboration and knowledge sharing among countries.

**Country Involvement:** Nigeria is a participating member of the Joint Learning Network.

**Climate Change Focus:** AMREF plans to incorporate initiatives around climate change into its work.

**Opportunity for Collaboration:** The JLN provides a platform for countries to learn from each other on topics such as climate change and other critical areas.

**Invitation for Engagement:** Desta encourages interested parties to reach out to AMREF for more information about the Joint Learning Network's work.



**Dr. Tamer Samah Rabie**  
Global Program Lead for Climate and Health at the World Bank

**Climate Smart Health Systems Collaborative:** The Joint Learning Network (JLN) has developed a global initiative called the Climate Smart Health Systems Collaborative.

**Stakeholder Engagement:** Recent discussions have involved various stakeholders, providing valuable insights into potential collaborations.

**Planned Actions:** Over the next few months, the focus will be on working closely with partners like AMREF and the World Bank to operationalize the collaborative at the country level.

**Capacity Development:** Efforts will center on setting up the initiative, identifying necessary tools, and enhancing capacity development to support climate-resilient health systems.



**Dr Olumide Okunola**  
Senior Health Specialist  
World Bank

### CONCLUSION

Olumide highlighted an upcoming course featuring four to five compulsory webinars and a capstone flagship event, with full attendance required for participation in the capstone. Partnerships, possibly including Nigeria Healthwatch, will support the initiative. The course will be widely announced and accessible, focusing on capacity building as a crucial step for advancing the policy agenda.



# BREAKOUT SESSION II



## PROTECTING MOTHERS IN A CHANGING CLIMATE



**Onyedikachi Ewe**  
Senior Programme and Advocacy Manager, Nigeria Health Watch

**Iyadunni Olubode**  
Nigeria Country Director MSD for Mothers

**Faithfulness Oyinloye**  
Officer for Sustainability and ESG Unit, Nigerian Sovereign Investment Authority (NSIA)

**Chiagozie Abiakam**  
Manager Women's Wellness Program mDoc Healthcare

**Chukwunonso Nwaokorie**  
Project Director, Smiles for mothers Programme, Solina Centre for International Development and Research (SCIDaR)

**Christopher Aimakhu**  
2nd Vice President Society of Gynaecology and Obstetrics of Nigeria (SOGON)

**Dr Samuel Oyeniyi**  
Director/Head Safe Motherhood Reproductive Health Division Department of Family Health, Federal Ministry of Health and Social Welfare, Nigeria



### KEYNOTE PRESENTATION

**Iyadunni Olubode**  
Nigeria Country Director MSD for Mothers

Iyadunni Olubode, representing MSD for Mothers, introduced her organization's mission to reduce maternal mortality in countries like Nigeria. MSD collaborates with local partners to bring innovative, life-saving solutions to maternal health challenges, especially those influenced by climate change.

#### Climate Change and Women's Health:

Olubode emphasized that climate change disproportionately affects women, impacting food security, water access, and family health. These pressures are even more severe for pregnant women, who face heightened risks due to climate-related resource scarcity.

#### The Heat-Stable Carbetocin Story:

She shared the journey of creating heat-stable carbetocin, a drug that prevents postpartum hemorrhage (PPH). Traditional

*"This is an example of collaboration—a situation where the climate issue is affecting the health outcomes of women, and how coming together and working together over time consistently can deliver outcomes."*

drugs lose effectiveness in high temperatures, a climate issue, so MSD for Mothers partnered with Ferring Pharmaceuticals and the WHO to develop this climate-resilient alternative, which is now in use across several Nigerian states.

#### Implementation in Nigeria:

The speech also described the implementation of heat-stable carbetocin in Nigeria, where MSD for Mothers partnered with local organizations to integrate the drug into healthcare systems. This initiative brought new attention to PPH and strengthened healthcare provider training, supply chains, and public sector policy. Olubode acknowledged the support of funders like UNITAID and the Bill & Melinda Gates Foundation, who are expanding access to climate-resilient health products.



## *Women, disproportionately affected by climate change*

### **FAITHFULNESS OYINLOYE:**

Officer for Sustainability and ESG Unit, Nigerian Sovereign Investment Authority (NSIA)



*"Climate change acts as a trigger on its own. You see it as HIV in quotes, and then HIV just opens the door to all other infections to come in and then break down the entire immune system."*

### **Vulnerability of Pregnant Women:**

Faithfulness emphasized that pregnant women have weakened immune systems, making them more susceptible to the health impacts of climate change.

### **Impact on Children:**

Children, particularly newborns, also have underdeveloped immune systems and are highly vulnerable to the consequences of climate change.

### **Climate Change as a Trigger:**

Climate change acts as a "trigger" that exacerbates existing health vulnerabilities. It can lead to extreme weather events, displacement, and poor living conditions, increasing the risk of various health complications for women and children.

### **Specific Risks for Pregnant Women:**

These include increased risk of infections, heat stroke, hypertension, pre-eclampsia, and mental health issues.

## *Nigeria's healthcare system addressing significant climate-related maternal health risks during pregnancy.*

### **PROFESSOR CHRISTOPHER AYIMAKU**

2nd Vice President Society of Gynaecology and Obstetrics of Nigeria (SOGON)



*"Pregnancy induced hypertension, quote me now, is the greatest killer right now."*

### **Rising Maternal Mortality:**

Despite government efforts, maternal mortality rates in Nigeria continue to rise.

### **Climate Change as a Major Factor:**

Professor Ayimaku emphasized the significant impact of climate change on maternal health, citing stress, extreme heat, and weather events as major contributors.

### **Stress as a Key Driver:**

He highlighted stress as a major contributor to complications like pregnancy-induced hypertension, depression, and anxiety among pregnant women.

### **Systemic Challenges:**

He addressed systemic issues such as the "Japa syndrome" (brain drain of healthcare professionals) and the vulnerability of healthcare infrastructure to climate change impacts.

### **Need for Improved Infrastructure and Support:**

Professor Ayimaku emphasized the need for better infrastructure, including cooling centers, and improved support for healthcare workers to address the challenges of climate change on maternal health.

## *Examples of policies/ initiatives addressing the impact of climate change on mothers, nationally and sub-nationally.*

### **Doctor Samuel Oyeniyi.**

Director/Head Safe Motherhood Reproductive Health Division Department of Family Health, Federal Ministry of Health and Social Welfare, Nigeria



*"The same model strategy, is a strategy that will help us to implement all the interventions which we didn't have before now..."*



**Importance of the Same Model Strategy:**

Dr. Sam emphasized the significance of the recently developed Same Model Strategy, which aims to improve the implementation of maternal and child health interventions in Nigeria.

**Focus on a Continuum of Care:**

He highlighted the importance of a holistic approach to healthcare, emphasizing the need to consider a continuum of care from preconception to elderly care.

**Addressing Policy Implementation Gaps:**

Dr. Sam acknowledged the challenge of implementing health policies effectively and emphasizes the role of the Same Model Strategy in addressing this issue.

Ministry of Health, state governments, and other funders, to achieve its goals.

**Addressing Challenges:**

The speech acknowledges challenges such as limited funding, the need for improved procurement strategies, and the ongoing need to raise awareness among healthcare providers about heat-stable carbetocin.

**Utilization of digital health solutions to address maternal health challenges caused by climate change.**

**DR. CHIAGOZIE ABIAKAM**

Manager Women's Wellness Program  
mDoc Healthcare



*"We're leveraging AI technology to improve access to care for women of reproductive age, at the same time empowering them, building their digital and health literacy."*

**Smiles for Mothers' progress in promoting the adoption of Heat-stable Carbetocin in Nigeria**

**DR CHUKWUNONSO NWAOKORIE**

Project Director, Smiles for mothers Programme, Solina Centre for International Development and Research (SCIDaR)



*"It's important to note that the value that heat stable carbetocin brings is that it doesn't need refrigeration."*

**Focus on Increasing Access to Heat-Stable Carbetocin:**

Smiles from Mothers aimed to increase access to heat-stable carbetocin, a medication to prevent postpartum hemorrhage, by addressing policy, availability, and healthcare worker training.

**Three-Pillar Approach:**

The project utilized a three-pillar approach: policy updates, ensuring commodity availability, and healthcare worker capacity building.

**Collaboration and Partnerships:**

Smiles from Mothers collaborated with various stakeholders, including the Federal

**Leveraging Technology for Improved Access to Care:**

MDOC uses AI technology to improve access to healthcare for women of reproductive age, empowering them to make informed decisions about their health.

**Addressing Nutritional Deficiencies:**

The "Garden in the Box" initiative provides women with vegetable seeds, promoting home gardening and improving nutrition, which is crucial for maternal and child health.

**Improving Health System Responsiveness:**

By using AI-powered platforms to gather feedback from patients, MDOC helps healthcare facilities identify and address issues related to climate change, such as poor sanitation and the spread of infectious diseases.

**Empowering Women:**

The initiatives focus on empowering women by providing them with knowledge and resources to improve their own health and the health of their families.



**Question 1**  
**Sandra (Midwife):**

"How do you plan to make AI-driven healthcare accessible to people in rural areas, considering the urban-rural divide in terms of education, exposure, and environmental conditions?"

**Dr. Chiagozie Abiakam**

**Manager Women's Wellness Program mDoc Healthcare:**

Dr. Chiagozie Abiakam explained MDOC's approach to making AI-driven healthcare accessible to rural and low-income women by focusing on digital literacy through a "phygital" approach—a combination of physical and digital support. MDOC has established community-based knowledge hubs and uses roving community ambassadors to reach women directly, teaching them to use digital platforms. The AI chatbot was co-designed with input from these women, incorporating features such as responses in Pidgin and voice-to-text functionality, making it easier for users with limited literacy or typing skills to interact with the chatbot in a way they understand.

**Question 2**  
**David Agunlofi (Options):**

"How can we ensure that maternal health services remain accessible and resilient, particularly in rural and hard-to-reach areas, given the direct and indirect impacts of climate change on health infrastructure?"

**Professor Christopher Ayimaku**

**2nd Vice President Society of Gynaecology and Obstetrics of Nigeria (SOGON)**

Professor Christopher Ayimaku highlighted that ensuring resilient and accessible maternal health services in rural areas requires addressing both infrastructural and political challenges. He pointed out that health facilities are often built in politically motivated locations, making them inaccessible due to poor roads and inadequate facilities. He emphasized the need for political will to improve access, affordable healthcare costs, and appropriate government subsidies, such as reducing exorbitant electricity bills for hospitals. Ayimaku also noted the importance of mental health support for women to maintain their overall well-being.

**Dr. Chukwunonso Nwokorie**

**Project Director, Smiles for mothers Programme, Solina Centre for International Development and Research (SCIDaR)**

To ensure maternal health services remain accessible and resilient in rural areas despite climate change impacts, Dr. Chukwunonso Nwokorie recommends three key strategies.

Climate-resilient infrastructure is crucial. This involves adapting and building healthcare facilities using new technologies that can withstand climate-related disasters, and transitioning to renewable energy sources like solar.

Robust supply chains are also essential. Innovative solutions, such as drones, can be utilized to deliver essential medicines and supplies during climate disasters, ensuring uninterrupted healthcare services.

Enhancing the workforce capacity is vital. This involves training healthcare workers to use climate-adapted medical solutions, such as heat-stable calcitonin, and manage climate-related health conditions, like diarrhea using ORS. By implementing these measures, maternal health services can better withstand climate change impacts.



## SUMMARY

### FAITHFULNESS OYINLOYE



1. Data collection is crucial for addressing climate change impacts.
2. Aggregate climate, environmental, and weather pattern data in vulnerable regions.
3. Regional-specific climate challenges:  
**North:** desertification, heat stress, sandstorms  
**Niger Delta:** warmer temperatures, malaria  
**Coastal regions:** flooding
4. Regular data collection (weekly, monthly, yearly) is necessary.
5. Analyze and correlate weather data with maternal outcomes.
6. Data-driven insights inform better policies and investments.
7. Accurate data gathering improves maternal health and resilience to climate change.

### PROFESSOR CHRISTOPHER AYIMAKU



"Climate change is a serious global issue that Nigeria must also prioritize. To address rising maternal mortality rates, we need:

1. Advocacy to raise awareness
2. Training for healthcare professionals
3. Improved structural facilities
4. Reduced costs for maternal care

If we don't make quality care affordable, women will seek inferior alternatives, leading to continued loss of mothers and babies."

*Let us democratize the conversation around climate change. Let us take very small but very mighty steps to ensure that everybody everywhere understands climate change, knows what, how the activities affect, you know climate change and what they can do to reduce the effects of climate change.*

**- Dr Chukwunonso  
Nwokorie**



### DR CHUKWUNONSO NWAOKORIE

To effectively address climate change, three key elements are crucial.

**Partnerships:** Collaborative efforts are essential, as seen in initiatives like Smiles for Mothers. By working together, organizations can pool resources, expertise, and knowledge to create significant impact

**Adaptive Policies:** Policies must evolve to address the current reality of climate change. This involves updating existing policies and creating new ones that consider the challenges posed by climate change.

**Data-Driven Action:** Accurate and actionable data is vital for informed decision-making. Using data effectively enables us to track progress, identify areas for improvement, and adapt strategies as needed.



## BREAKOUT SESSION III

## PATHFINDER

### **BUILDING CLIMATE-RESILIENT HEALTH SYSTEMS: KNOWLEDGE EXCHANGE FOR POLICY, PRACTICE AND PARTNERSHIP**



**Dr. Hafiz Saidu Yaro**  
Technical Advisor - BMGF GeoST4R Investment- Pathfinder International

**Dr Amina Dorayi**  
Senior Country Director, Pathfinder International

**Ms. Ameenat Abdulsalam**  
Research and Campaigns Associate, Amnesty International

**Kenneth Akpan**  
Climate Justice Lead, OXFAM, Nigeria

**Festo F Komba**  
Senior Portfolio Technical Advisor- Population, Health, and Environment (SPTA-PHE) Pathfinder International



### KEYNOTE ADDRESS

**Dr Amina Dorayi**  
Senior Country Director, Pathfinder International

#### **Intersectoral Collaboration:**

Collaboration between different sectors, including health, agriculture, and environment, is essential to address complex challenges like climate change.

#### **The Need for Innovation:**

Innovative approaches are needed to develop sustainable and equitable solutions to climate change and health issues.

#### **Hope for the Future:**

Despite the challenges, there is hope for a more resilient future through collective action and innovative solutions.

***"Through shared knowledge, partnerships, and equity, we can create a future where climate resilience is built into every facet of our health system, leaving no woman or girl behind in the wake of climate disasters."***

***-Dr Amina Dorayi***

#### KEY HIGHLIGHTS

##### **Climate Change as a Major Health Issue:**

Climate change is a significant global issue that impacts health systems, particularly in vulnerable regions like Africa.

##### **Impact on Women and Children:**

Women and children are disproportionately affected by climate change, facing challenges such as reduced access to healthcare, increased maternal and child mortality, and food insecurity.

##### **The Role of Health Systems:**

Resilient health systems are crucial to addressing the health impacts of climate change.

##### **Community-Based Solutions:**

Empowering communities, especially women and young people, is key to implementing effective climate solutions.



## Climate Change Impacts on Women in Nigeria and Gender-Sensitive Solutions



**Ms. Ameenat Abdulsalam**  
Research and Campaigns Associate, Amnesty International

### HIGHLIGHTS

#### **Climate Change as a Multifaceted Issue:**

Climate change is not just an environmental issue but also a social, economic, and health issue.

#### **Disproportionate Impact on Vulnerable Groups:**

Women, children, and marginalized communities are disproportionately affected by climate change.

#### **The Role of Gender:**

Gender inequalities exacerbate the impact of climate change, particularly on women and girls.

#### **Interconnected Issues:**

Climate change is intertwined with other social issues, such as poverty, inequality, and food insecurity.

#### **The Need for Targeted Interventions:**

Addressing the specific needs of vulnerable groups is crucial in building climate resilience.

She concluded that these challenges are deeply rooted in societal structures, compounding the effects of climate change on women and girls. Addressing them requires gender-sensitive climate programming that tackles these sociocultural barriers while integrating health, education, and economic support for women and girls.

## Climate Justice and Health Equity: Collaborative Solutions



**Kenneth Akpan**  
Climate Justice Lead, OXFAM, Nigeria

*"Climate justice is about equity and making sure that those vulnerable people... are dealt with specially."*

### KEY POINTS:

#### **Climate Justice as a Health Issue:**

Climate change is not just an environmental issue, but a health crisis that disproportionately affects vulnerable populations.

#### **The Need for Targeted Interventions:**

Addressing the specific needs of vulnerable groups, such as women, children, and marginalized communities, is crucial.

#### **The Role of Advocacy:**

Amplifying the voices of marginalized communities and advocating for their rights is essential.

#### **Intergenerational Justice:**

Ensuring that future generations have a healthy planet requires immediate action.

#### **International Cooperation:**

Global cooperation is necessary to address the complex challenges of climate change and promote climate justice.



## Integrating Population, Health, and Environment for Climate Resilience: Lessons from Tanzania



**Festo F Komba**  
Senior Portfolio  
Technical Advisor-  
Population, Health,  
and Environment  
(SPTA-PHE)  
Pathfinder  
International

Festo shared insights from Pathfinder International's integrated Population, Health, and Environment (PHE) programming in Tanzania. He highlighted how these initiatives align health services with conservation efforts, targeting underserved communities near conservation areas. The approach strengthens community resilience to climate change while addressing biodiversity and environmental sustainability.

### Key Components of Tanzania's PHE Programming:

#### 1. Integrated Health Services:

- Provision of family planning, maternal, newborn, and child health services, as well as adolescent and youth sexual and reproductive health (SRH).
- Use of community health workers, household visits, and mobile outreach to serve rural populations.
- Collaboration with government health facilities to ensure broad access.

#### 2. PHE School Clubs:

- Educating youth on PHE topics, fostering informed future advocates for health and conservation.

#### 3. Model Households:

- Engaging entire households to adopt sustainable practices in health, population, and environmental management.

#### 4. Community Conservation Microfinance Groups:

- Promoting environmentally friendly income-generating activities to enhance economic and health resilience.

#### 5. Green and Inclusive Clinics:

- Establishing environmentally friendly health facilities accessible to rural populations.

### LESSONS FOR CLIMATE RESILIENCE:

- Integrating health and conservation programming ensures communities are empowered to adapt to climate change while preserving ecosystems.
- Youth engagement through schools creates generational advocates for sustainable practices.
- Economic empowerment through microfinance links environmental sustainability with livelihood improvement.
- Inclusive, green clinics demonstrate how health services can be sustainably provided even in fragile ecosystems.

Festo concluded that these strategies are essential for building community resilience to climate impacts while addressing health and environmental challenges comprehensively.



## Summary and key takeaways

<p><b>Dr Amina Dorayi</b> Senior Country Director, Pathfinder International</p>	<p><b>Ms. Ameenat Abdulsalam</b> Research and Campaigns Associate, Amnesty International</p>	<p><b>Kenneth Akpan</b> Climate Justice Lead, OXFAM, Nigeria</p>
<p><b>Policy Implementation:</b> Dr. Amina emphasized the importance of implementing climate change policies at the state level.</p> <p><b>Inclusive Approach:</b> She advocated for an inclusive approach that considers the needs of marginalized groups, such as people with disabilities and survivors of gender-based violence.</p> <p><b>Sustainable Solutions:</b> She highlighted the need for sustainable solutions that address the root causes of climate change and its impact on health.</p> <p><b>Community-Based Approaches:</b> She promoted community-based approaches to climate change adaptation and mitigation.</p>	<p><b>Insufficient Funding:</b> Miss Ameenat Highlighted the inadequate funding for climate change initiatives in Nigeria, particularly in the National Appropriation Bill.</p> <p><b>Need for Intersectoral Funding:</b> She advocated for increased funding from various sectors to address climate change impacts.</p> <p><b>Importance of Advocacy:</b> Ameenat emphasized the role of advocacy in raising awareness and mobilizing support for climate action.</p> <p><b>Inclusive Approach:</b> She called for a more inclusive approach to climate change discussions and policies.</p>	<p><b>Focus on Equity and Inclusion:</b> Kenneth emphasized the importance of ensuring that everyone benefits from climate action and that marginalized groups are not left behind.</p> <p><b>Policy Advocacy:</b> He highlighted the role of advocacy in influencing climate policies at the state level.</p> <p><b>Accountability and Transparency:</b> He called for greater transparency and accountability in the use of climate finance.</p> <p><b>Citizen Engagement:</b> Kenneth Akpan encouraged citizens, particularly youth and media, to monitor the use of climate funds and hold governments accountable.</p>



**Festo F Komba**  
Senior Portfolio  
Technical Advisor-  
Population, Health,  
and Environment  
(SPTA-PHE)  
Pathfinder  
International

Festo emphasized the importance of collaboration in addressing climate issues, highlighting that climate change is an intersectoral challenge. He recommended fostering partnerships between different sectors to effectively tackle climate change and build resilience.



## Questions from the audience



**Nura Nasir:**

What individual actions can we take to address the ongoing issue of gender inequality, particularly in the context of women and girls' rights?



**Brian:**

How can climate change mitigation and adaptation initiatives be designed to specifically address the needs and vulnerabilities of women and children, beyond traditional approaches like tree planting and green infrastructure?



**Dr Amina Dorayi**  
Senior Country Director,  
Pathfinder International

Dr. Amina in response emphasized the importance of women leading efforts to address gender inequality and climate-related issues, as their experiences and perspectives are unique and invaluable. She highlighted the need for collaboration, integration of climate considerations into all aspects of life, and inclusion of communities in developing solutions. She stressed the significance of training health workers and tailoring resources to address specific climate crises. Amina also advocated for women-centered climate-smart initiatives, such as in households, schools, and health facilities, to build sustainable and resilient systems. Lastly, she encouraged attendees to explore further resources and learn from global examples of impactful climate action.



# PANEL 2



## BUILDING CLIMATE RESILIENT HEALTH SYSTEMS FOR GLOBAL HEALTH SECURITY

<p><b>Chijioko Kaduru</b> Managing Director, Corona Management Systems <b>Moderator</b></p>	<p><b>Desta Lakew</b> Group Director of Partnerships and External Affairs, AMREF Health Africa</p>	<p><b>Dr Winifred Ukonu</b> Associate Director, Georgetown Global Health Nigeria</p>	<p><b>Abdulhamid Yahaya</b> Deputy Director, Global Health Informatics eHeath Africa.</p>	<p><b>Nanlop Ogbureke</b> Country Director, Resolve To Save Lives</p>
---	--	--	---	---

### INTRODUCTORY KEYNOTE

**Desta Lakew**  
Group Director of Partnerships and External Affairs, AMREF Health Africa



*"If health is at the center of all of our lives, and if climate impacts health the most, then health must be part of the negotiations and part of the discussions as well."*

#### KEY HIGHLIGHTS:

##### AMREF's Mission:

AMREF is an African-led health development organization focused on community-based solutions to improve health outcomes, particularly for women and children.

##### Impact of Climate Change on Health:

Climate change significantly impacts health in Africa, leading to increased

risks of infectious diseases, malnutrition, and disruptions to healthcare services.

##### Need for Resilient Health Systems:

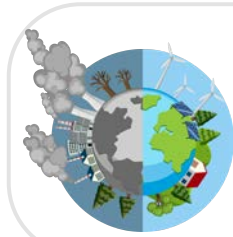
Building resilient health systems is crucial to address the health impacts of climate change. This includes strengthening primary healthcare, integrating climate considerations into health policies, and improving early warning systems.

##### Advocacy for Health in Climate Action:

AMREF emphasizes the need for stronger advocacy for health within the UNFCCC framework, including the establishment of a formal working group on health.

##### Pan African Partnership on Climate Change and Health:

AMREF has formed a Pan African partnership to advocate for health priorities within global climate discussions and ensure a unified African voice on climate and health issues.



**4%**

Africa Contributes Less than 4% of global greenhouse gas emissions.

BETWEEN  
**2001-2021**

nearly **2,000** public health events in Sub-Saharan Africa were climate-related.



Climate change could lead to **250,000** additional deaths per year globally from 2030-2050.

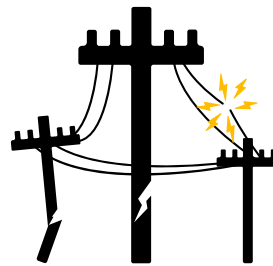


Africa is projected to see **60 - 80%** increases in death rates by 2030 due to climate change, with malaria and diarrhea being the leading causes.

**20M People**



in the Horn of Africa face severe hunger and water scarcity due to ongoing droughts.



**1/3** OF HEALTH FACILITIES

in Sub-Saharan Africa experience frequent power



Climate change adaptation in Sub-Saharan Africa is forecast to cost between **\$30 B and \$50 B** annually over the next decade.

BETWEEN  
**2021-2022**



Africa received only **10.8 B** in adaptation finance.



African countries are losing **2-5% of GDP** due to climate-related hazards.

Africa needs an estimated **\$277 billion** per year to meet climate goals outlined in their Nationally Determined Contributions (NDCs).



## Key Considerations for Evidence-Based Policy in Climate-Resilient Health Systems

**Dr Winifred Ukpou**  
Associate Director,  
Georgetown Global  
Health Nigeria



*"We need to really listen to the people of the community. They are the ones who are heavily impacted, like they say, it is he who wears the shoe that knows where it pinches."*

Dr. Winifred Ukpou emphasized the importance of data-driven policymaking and community engagement for building climate-resilient health systems.

### KEY CONSIDERATIONS INCLUDE:

#### Data-driven decision-making:

Using data to inform risk assessments, policy development, and monitoring implementation.

#### Sub-national level focus:

Prioritizing action at the local level, where policies are implemented and impact is felt.

#### Community engagement:

Listening to community members and incorporating their knowledge and solutions into policy and implementation.

#### Iterative process:

Continuously monitoring and improving policies to ensure effectiveness and address emerging challenges.

## Integrating Climate Resilience into Emergency Preparedness for Health Systems



**Nanlop Ogbureke**  
Country Director  
Resolve to Save Lives

*"we are beginning to see, especially in the federated state like Nigeria, that the sub-national is also important."*

### Focus on Sub-national Level:

Nanlop Ogbureke emphasized the importance of sub-national level engagement, recognizing that effective policy implementation requires action beyond the national level.

### Enhanced Situational Awareness:

She highlighted the importance of tools like enhanced situational awareness systems and seasonal calendars to improve early warning and response to disease outbreaks.

### Role of Primary Health Care:

Ogbureke emphasized the critical role of primary healthcare in strengthening health security and building resilient health systems.

### Importance of Collaboration and Partnerships:

She stressed the importance of multi-sectoral partnerships, including collaboration with NCDC, the Ministry of Health, and other stakeholders, for effective health security interventions.

### Leveraging Local Knowledge:

Ogbureke highlighted the importance of incorporating local knowledge, such as was obtained through seasonal calendars, into disease surveillance and response efforts.



## Key Considerations for Evidence-Based Policy in Building Climate-Resilient Health Systems

### Abdulhamid Yahaya

Deputy Director, Global Health Informatics eHeath Africa.



*"By analyzing historical and real-time data, including factors like weather patterns, population movement, and water sanitation, these models can provide early warnings to enable timely interventions."*

#### **AI for Disease Prediction:**

Utilizing AI and machine learning models to predict outbreaks of climate-sensitive diseases based on various data sources, including weather patterns, population movement, and water sanitation data.

#### **Remote Sensing and GIS for Hotspot Identification:**

Using GIS and remote sensing to map and identify high-risk areas for climate-related diseases, enabling targeted interventions.

#### **Climatic and Genomic Surveillance:**

Monitoring pathogens and analyzing their genetic changes in response to climate change, including tracking mosquito movements and assessing the impact of climate change on antimicrobial resistance.

#### **Disease Surveillance Apps:**

Utilizing mobile apps for disease surveillance, allowing for real-time data collection, information dissemination, and early warning alerts.

#### **Leveraging Emerging Technologies:**

Utilizing a range of emerging technologies, including wearables, IoT devices, and drones, to improve data collection, delivery of medical supplies, and response efforts.



## KEY LESSONS WE SHOULD HAVE LEARNED FROM THE COVID 19 PANDEMIC



**Abdulhamid Yahaya** highlighted key lessons learned from the COVID-19 pandemic that are relevant to addressing climate-related health challenges:

**Strengthening Health Infrastructure:** Investing in climate-proof health facilities.

**Leveraging Technology:** Enhancing technological infrastructure for effective health interventions.

**Data-Driven Decision Making:** Utilizing data to inform targeted interventions.

**Multi-Sectoral Collaboration:** Fostering collaboration between different sectors.

**Social Safety Nets:** Implementing climate-adaptive health insurance schemes.



**Dr. Nanlop Ogbureke** emphasized the importance of addressing the social justice aspects of climate change and health. She highlighted the need for inclusive and equitable approaches to health interventions, recognizing the diverse needs of different populations, particularly marginalized groups.

The COVID-19 pandemic underscored the importance of maintaining essential health services during crises. Ogbureke emphasized the need to integrate climate considerations into health security planning and to develop climate-sensitive indicators for monitoring progress.

She also highlighted the importance of inclusive decision-making processes, involving diverse stakeholders, including women, persons with disabilities, and other marginalized groups. By incorporating their perspectives and experiences, it is possible to develop more effective and equitable climate-resilient health solutions.



**Dr. Winifred Ukponu** highlighted the importance of cross-sectoral collaboration and capacity building in addressing climate-related health challenges. Key lessons from the COVID-19 pandemic include:

**Strengthening Cross-Sectoral Collaboration:** Fostering collaboration between different sectors, such as health, transportation, and aviation, to address complex health challenges.

**Leveraging Data and Technology:** Utilizing data from meteorological agencies, such as NIMET, to inform early warning systems and preventive measures.

**Building Capacities:** Investing in capacity building for healthcare workers and other professionals, including those at the point of entry, to enhance preparedness and response capabilities.

**Utilizing Virtual Training:** Leveraging virtual training platforms to rapidly scale up capacity building efforts.

**Partnering with Existing Structures:** Collaborating with existing partners and organizations to maximize resources and expertise.



## KEY TAKEAWAY

### Desta Lakew

Group Director of Partnerships and External Affairs, AMREF Health Africa



### Community-Centered Solutions:

Emphasizes the importance of involving communities in identifying and implementing solutions.

### Indigenous Knowledge:

Recognizes the value of traditional knowledge and practices in addressing climate-related challenges.

### Contextualized Solutions:

Highlights the need for solutions to be tailored to specific local contexts and needs.

### Beyond Technical Solutions:

Emphasizes the importance of considering social and cultural factors when designing interventions.

## CLOSING REMARKS

*"Solutions come from home. Solutions come from the community. They know what the needs are. They know what the solutions are. So let's look within."*

### Dr. Kemi Agbaoye

Director of Programmes, Nigeria Health Watch



Dr. Kemi Agbaoye concluded the conference by highlighting several key takeaways and action points:

**Data and Technology:** Emphasized the need for robust data systems and early warning systems to inform decision-making and response efforts.

**Capacity Building:** Highlighted the importance of building capacity at all levels, including sub-national, to address climate-related health challenges.

**Financing:** Recognized the availability of financing but stressed the need for capacity to access and utilize these funds effectively.

**Climate-Proof Health Infrastructure:** Advocated for building resilient health facilities, such as primary health care centers, to ensure continued access to essential services during climate-related disasters.

**Community Engagement:** Underlined the crucial role of community engagement in identifying solutions and ensuring ownership of interventions.

She also highlighted the importance of leveraging existing structures, partnerships, and homegrown solutions to address climate-related health challenges. Dr. Agbaoye emphasized the need to democratize the climate health conversation and to involve young people and marginalized communities in decision-making processes.



## IMPACT REPORT Post Conference:

### Virtual Engagement (Zoom and YouTube Analysis)

Three hundred and thirty-two (332) attendees participated in the conference live on the conference day, with 75% (249) joining via YouTube and 25% (83) via Zoom. Between October 25 and November 30, 2024, YouTube recorded an additional 161 views, bringing the total virtual engagement metrics for the conference to the following:



total views on YouTube, contributing to 75.3 hours of total watch time and an average view duration of 11:01 as of November 30, 2024.



**10,286** minutes of total virtual stream time on Zoom.

### Pre-Future of Health Conference Webinar (Shaping Nigeria's Climate and Health Agenda)



**130** Participants joined the webinar live via Zoom,



**54 views**

via the published link on YouTube as of November 30, 2024.



**6,486 minutes**

Total virtual view time on Zoom



**6.9**

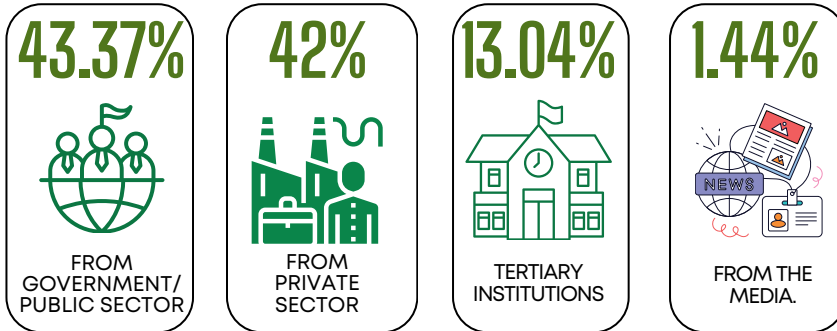
Hours Watch time

**7.42**

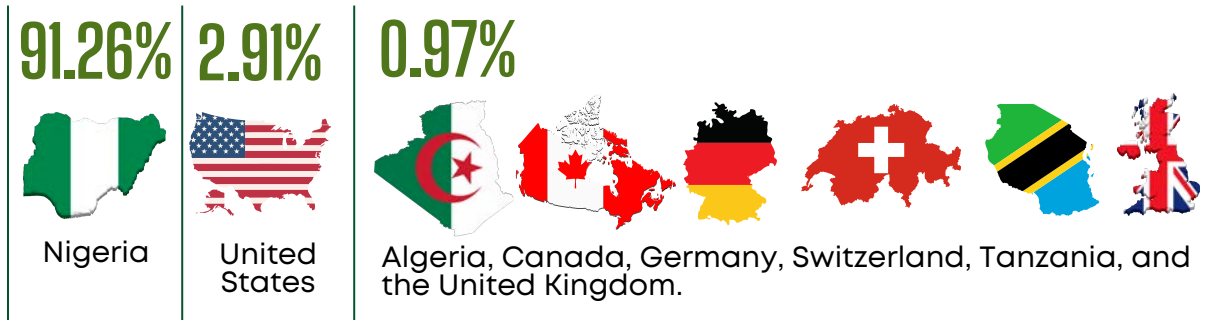
Average view duration on YouTube recorded



### Demography of participants who joined the webinar live via Zoom



### Nationality of participants who joined the webinar live via Zoom



**76.71%** 76.71% of participants indicated interest in being added to the Nigeria Health Watch's newsletter.

A post-webinar survey was conducted to evaluate participants' experiences and gather feedback; the key findings are as follows:

#### SATISFACTION LEVELS:

##### Quality of the webinar



##### Relevance of the topics discussed





### Quality of presentations

57.14%



of respondents were  
**"Very Satisfied"** with the  
overall quality

28.57%



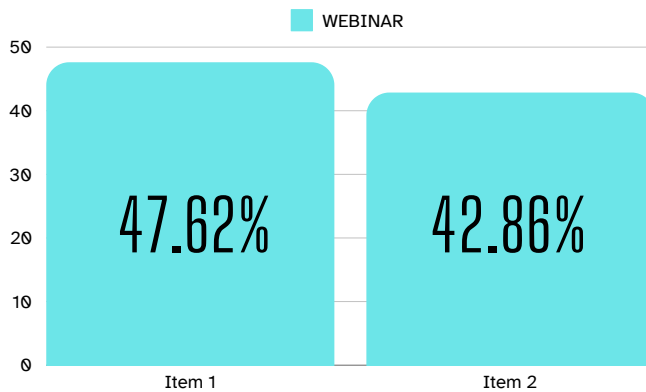
of respondents were  
**"Satisfied"** with the  
overall quality

14.29%



expressing **neutrality**.

### -UNDERSTANDING CLIMATE CHANGE AND HEALTH

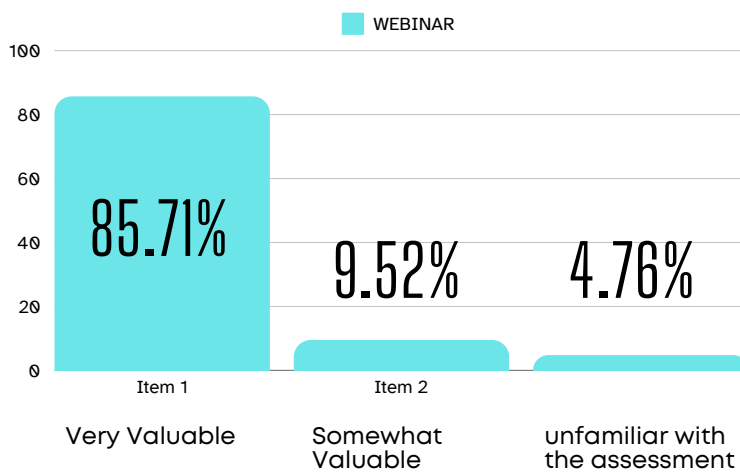


Greatly Enhanced their  
understanding of the  
relationship between  
climate change and  
health

Somewhat Improved  
their understanding.

47.62% reported that the  
webinar "Greatly Enhanced"  
their understanding of the  
relationship between  
climate change and health,  
while 42.86% indicated it  
"Somewhat Improved" their  
understanding.

### INSIGHTS ON NATIONAL CLIMATE AND HEALTH VULNERABILITY AND ADAPTATION ASSESSMENT:



Very Valuable

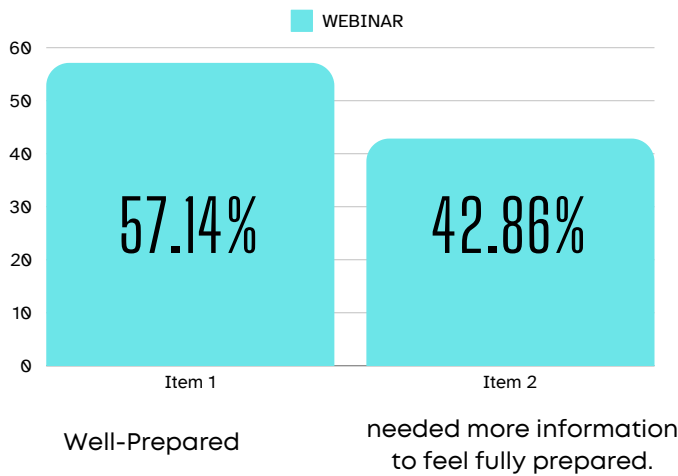
Somewhat  
Valuable

unfamiliar with  
the assessment

85.71% found the session  
"Very Valuable" in providing  
insights into climate  
change's role in Nigeria's  
nutrition crisis and health  
outcomes, and 9.52% found  
it "Somewhat Valuable."  
Only 4.76% were unfamiliar  
with the assessment before  
the webinar.



### -PREPAREDNESS FOR THE UPCOMING FUTURE OF HEALTH CONFERENCE (FHC) 2024:

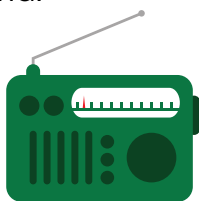


57.14% felt "Well-Prepared" for the Climate and Health Workshop and Future of Health Conference (FHC) 2024, while 42.86% stated they needed more information to feel fully prepared.

Participants further highlighted areas for improvement, including enhancing the webinar experience, increasing the time for presentations to cover key topics comprehensively, and sharing slides promptly for further review. Participants also suggested incorporating more interactive elements like case studies and audience engagement activities to enrich the sessions. Additionally, providing access to supplementary resources, like relevant materials and reading opportunities, was recommended to deepen understanding.

### Future of Health Conference 2024 in the News

The Future of Health Conference 2024 was extensively covered by traditional media, highlighting its importance in addressing climate change and health challenges in Nigeria.



**5**  
radio stations  
aired discussions,



**32,589**  
listeners  
tuning in

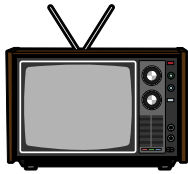


**59.18% male**  
(19,286) listeners.



**40.82% Female**  
(13,303) listeners.

A total of 5 radio stations aired discussions, with 32,589 listeners tuning in across platforms such as Aso Radio, Kapital FM, Wazobia FM, Raypower FM, and Nigeria Info. The audience comprised of both genders, with 59.18% male (19,286) and 40.82% female (13,303) listeners.



**5**  
TV stations  
Including NTA



**131**  
total  
views.



**In print**

10 leading newspapers, such as Daily Trust, The Nation, The Punch, and The Guardian, published pre- and post-conference stories,

On television, 5 TV stations, including NTA, Arise TV, Kaftan TV, and Silverbird TV, broadcasted conference-related content, generating 131 total views. In print and online, 10 leading newspapers, such as Daily Trust, The Nation, The Punch, and The Guardian, published pre- and post-conference stories, amplifying the event's message.

This comprehensive media coverage reached a broad audience, highlighting the conference's success in driving awareness and fostering critical conversations about climate-resilient health systems in Nigeria.



**Nigeria Health Watch To Host Conference On Climate Health**




Minimal emissions, intelligent and simple in the Nigerian health sector








## Post-Event Survey Analysis


A post-event survey was conducted to assess participants' experiences and identify areas for improvement for future events. We received a 100% completion rate of responses; the findings below were drawn based on the responses.

**63.89%**  of all participants reported having excellent experience at the Future of Health Conference (FHC)

**97.22%**  of participants were satisfied with the engagement opportunities, discussions, exhibitions, and networking provided during the event.

**88.89%**  of participants reported that the conference helped them understand the connection between climate change and health challenges in Nigeria and Africa to a great extent.

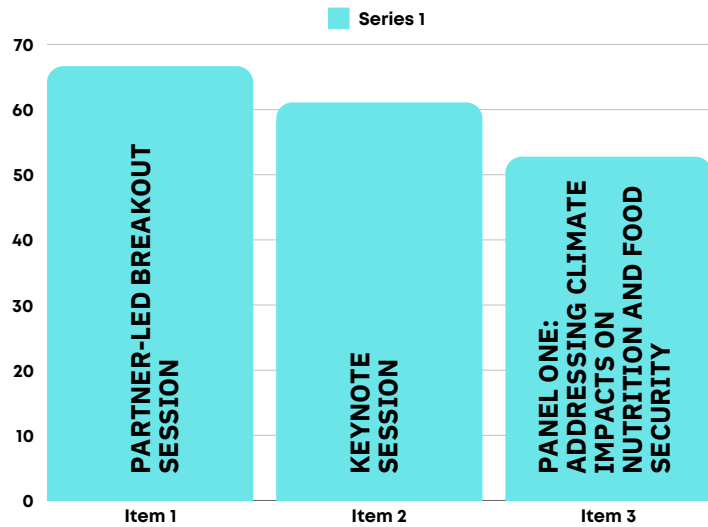
**91.67%**  of participants reported that the event provided valuable insights on building climate-resilient health systems through cross-sectoral collaboration

**77.78%**  of participants are very confident of applying the strategies discussed during the event to mitigate the health impacts of climate change in their workplace and community.



66.67%

of participants found the 'Partner-led breakout session' most valuable, followed by the keynote session (61.11%), and the "Panel One: Addressing Climate Impacts on Nutrition and Food Security" (52.78%).



86.11%



of participants felt the conference successfully highlighted the urgent need for policy action to include health in national climate policies.

### #BreakItDown Podcast Climate-Health Series



The #BreakItDown Podcast Climate-Health Series is a special feature for the 2024 Future of Health Conference, and it amplified discussions on the intersection of climate change and health.

Designed to complement the conference's themes, the series provided a platform for in-depth conversations with experts, addressing critical issues and offering actionable insights to help audiences better understand and respond to the health impacts of climate change.

The series achieved significant engagement, with a combined 235 views, 15.7 hours of total watch time, 3,449 impressions, and an average view duration across episodes of approximately 3:58. These metrics highlight the series' impact in driving awareness and fostering dialogue on critical health and climate issues.



The series achieved significant engagement, with a combined 235 views, 15.7 hours of total watch time, 3,449 impressions, and an average view duration across episodes of approximately 3:58. These metrics highlight the series' impact in driving awareness and fostering dialogue on critical health and climate issues.

**01**

The first episode, featuring Dr. Chijioke Kaduru, unpacked the hidden links between climate change and public health, addressing its impact on vulnerable populations, heatwaves, respiratory issues, and mental health. One listener highlighted the urgency of building efficient systems and ensuring policy follow-through. This episode resonated with listeners, garnering 84 views, 5.3 Watch time (hours), 3:48 Average view duration and 1,335 Impressions as of 30 November 2024.

**02**

The second episode delved into the alarming rise in mosquito populations driven by climate change, featuring insights from eHealth Africa. It explored how changing weather patterns fuel mosquito breeding, the disproportionate risks faced by certain communities, and the broader implications for global health. This episode resonated with listeners, garnering 43 views, 0.9 Watch time (hours), 1:13 Average view duration and 981 Impressions as of 30 November 2024.

**03**

The final episode, featuring Temitope Adegoroye of Sahel Consulting, focused on climate-resilient agriculture in Nigeria. It examined how climate change is reshaping food production, threatening nutritional security, and driving innovations in agricultural systems. A listener pointed out challenges related to data accessibility, particularly the cost of obtaining crucial climate data, as a barrier to research and innovation. This episode resonated with listeners, garnering 108 views, 9.5 Watch time (hours), 5:16 Average view duration and 1,133 Impressions as of 30 November 2024.

The #BreakItDown Podcast Climate-Health Series episodes raised awareness and provided actionable insights for building resilience in the face of a changing climate.



## Side Events (Pathfinder; MSD and World Bank)

A post-event survey was conducted to assess participants' experiences and identify areas for improvement for future events. We received a 100% completion rate of responses; the findings below were drawn based on the responses.

### World Bank:

#### Climate and Health in HOPE-PHC" session

**166** Participants attended the World Bank breakout session

**63.85%** (106) PHYSICAL ATTENDEES

**36.14%** (60) VIRTUAL ATTENDEES

**83.33%**  
Participants



Reported that this session enhanced their understanding of the link between climate change and healthcare systems in Nigeria.

**66.67%**  
Participants



Reported that the session provided clear insights into how climate financing can be leveraged to support climate-smart healthcare systems.

**(100%)**  
All Participants



Reported that they are very likely to collaborate with stakeholders on implementing climate-smart healthcare strategies discussed during the session.

### Pathfinder:

#### Building Climate Resilient Health Systems' breakout session

**185** Participants attended the World Bank breakout session

**69.18%** (128) PHYSICAL ATTENDEES

**31.35%** (57) VIRTUAL ATTENDEES

Between October 25 and November 30, 2024

**+131 Views** 

Between October 25 and November 30, 2024, YouTube recorded an additional 131 views, bringing the total virtual engagement metrics for the side event to 88 total views on YouTube, contributing to 6.4 hours of total watch time and an average view duration of 4:23 as of November 30, 2024.



90.91%

Participants



Reported that the session effectively enhanced their understanding of climate change's specific impact on the health of women and girls.

63.64%

Participants



significantly provided valuable insights into locally led solutions and innovative approaches to building climate-resilient health systems.

90.91%

Participants



Reported that they are very likely to collaborate with other stakeholders or apply the strategies discussed to strengthen climate resilience in their community or health system.

### MSD for Mothers:

### Protecting Mothers in a Changing Climate

185

Participants attended the World Bank breakout session

59.35% (80) PHYSICAL ATTENDEES

40.74% (55) VIRTUAL ATTENDEES

Between October 25 and November 30, 2024

+19 Views 

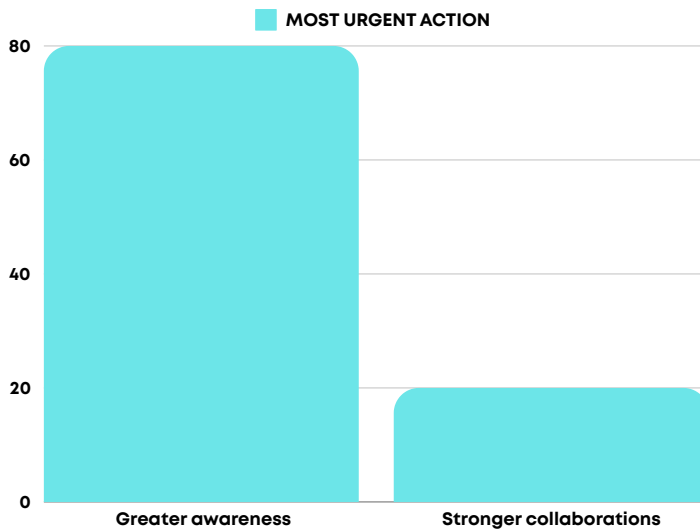
Between October 25 and November 30, 2024, YouTube recorded an additional 19 views, bringing the total virtual engagement metrics for the side event to 71 total views on YouTube, contributing to 2.6 hours of total watch time and an average view duration of 2:07 as of November 30, 2024.

90%

Participants



Reported that the session greatly impacted their understanding of the link between climate change and maternal health in Nigeria.



80% of participants reported that that “Greater awareness of climate change and maternal health” requires the most urgent action to address climate change’s impact on maternal health, followed by “Stronger collaborations between stakeholders” (20%)

90%  
Participants



Believe that the session provided practical solutions for mitigating the effects of climate change on maternal health.



## CONFERENCE IN PICTURES





### Conference Partners



**MSD**  
for Mothers

BILL & MELINDA  
GATES *foundation*



CORONA  
MANAGEMENT  
SYSTEMS

**PATHFINDER**



**THE WORLD BANK**  
IBRD • IDA | WORLD BANK GROUP



**DRASA**  
Health Trust



**GENDER**  
MOBILE

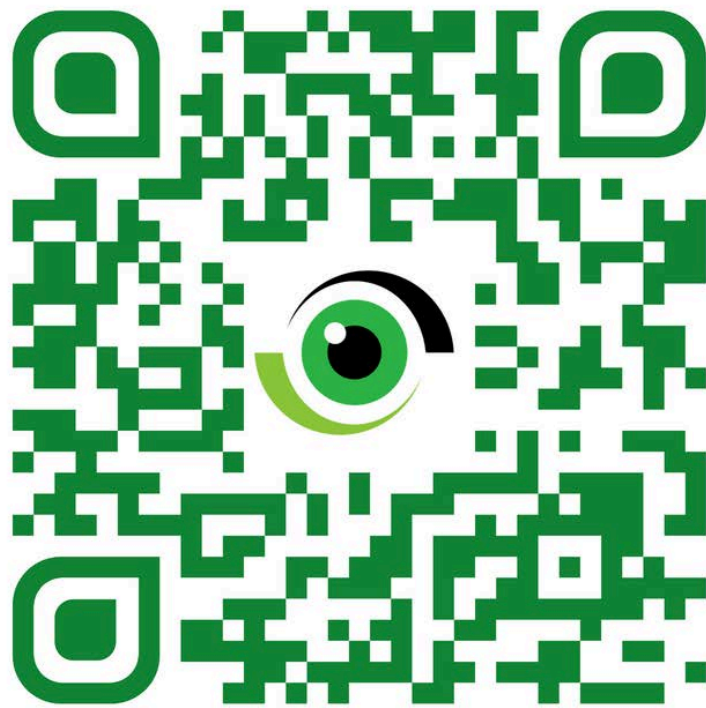


POWERED BY:

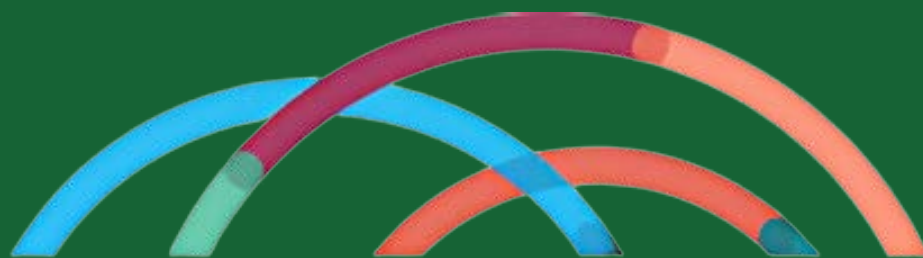


**NIGERIA  
HEALTH  
WATCH**

informed commentary, intelligence, and insights on the Nigerian health sector



SCAN ME



# FUTURE OF HEALTH CONFERENCE



7th floor, 79 Ralph Shodeinde St, Central Business  
Dis, Abuja 900103, Federal Capital Territory

 @nigeriahealthwatch

[www.nigeriahealthwatch.com](http://www.nigeriahealthwatch.com)