

- The poor, who's majority are women, often pay more for unimproved water and invariably pay higher for health care delivery
- Because of the high level of poverty in Nigeria, there is need to make payment of water as affordable as possible, especially for the poor
- There is the need to accelerate service delivery while the capacity of the civil society organisations should be enhanced to undertake sector monitoring and advocacy.

Notes and Sources

1. *Nigeria Housing and Population Census, 2006* (provisional)
2. *State of the World's Children*, UNICEF, 2008 (various government and UN data sources)
3. National Population Commission, 1991 Census Analytical Report, 1998
4. WHO/UNICEF Joint Monitoring Programme for Water Supply and Sanitation (JMP), 2008 report
5. World Bank Country Brief for Nigeria, March 2008
6. Gender and Water Alliance, December 2006
7. Core Welfare Indicators Questionnaire Survey (CWIQS), 2006

Key Messages

- Women and girls bear the greatest burden of collecting water in Nigeria and other countries, particularly in rural areas
- Water collection takes a huge amount of time, time that could be better used for other purposes such as productive activities and education
- While women are the main users and managers of water in Nigeria, their concerns are not taken into consideration while deciding the location and type of water facility.
- Conventional approaches are not gender-sensitive and have undervalued women's needs and contribution to the sector⁶
- Service delivery is most inadequate in the rural areas in Nigeria where also a larger percentage of the poor resides, majority of them women.

Call for Action

- Involve women in all water planning and implementation activities
- Invest in provision of water sources to support improved sanitation and hygiene practices.

For more information call:

Water and Sanitation Monitoring Platform (WSMP), Nigeria

Address: 2nd Floor, Metro Plaza, Zakariya Maimalari Street, Central Business District, Abuja

Email: wsmpnigeria@yahoo.com

Web: www.wsmpnigeria.wordpress.com

Tel: 234(0)8033557088, 234(0)8037051404

Basic Indicators

Total population (1000s) ¹	140,004
Population Growth Rate (%) ²	2.7
Proportion of the population that is female (%) ¹	48.8
Urban Population (%) ⁴	49
Under-five mortality rate (per 1000) ²	191
Life expectancy at birth (years) ²	47
GNI per capita ²	\$640
Population living on under \$1/day (%) ⁵	54
Primary School Enrolment Rate, net (%) ⁷	61.5

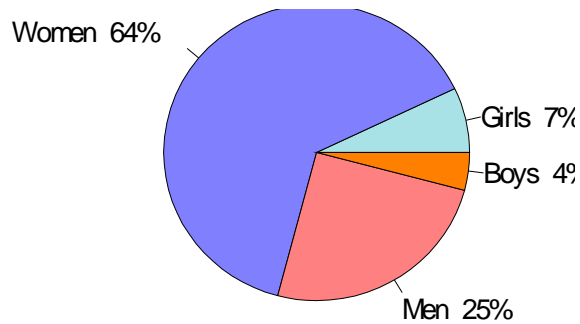
Gender Dimension of Hauling Water

Burden of Fetching Water in Developing Countries

- Women shoulder the largest burden in collecting water when drinking water is not available in the premises
- The distribution on who usually collect water based on data from 35 countries shows that women and girls are more than twice (71%) likely to go to fetch water than men and boys (29%)⁴.



Responsibility for Water Collection, Global

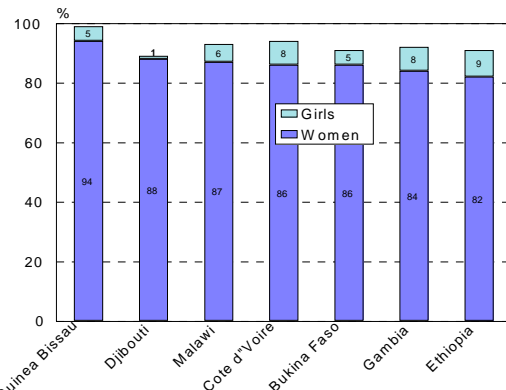


Source: JMP 2008 (Data used for this graph refers to MICS and DHS Surveys from 35 Developing Countries in 2005 & 2006)

Sub-Saharan Africa's Situation

In most countries of Africa women and girls shoulder over 90% the responsibility of fetching water.

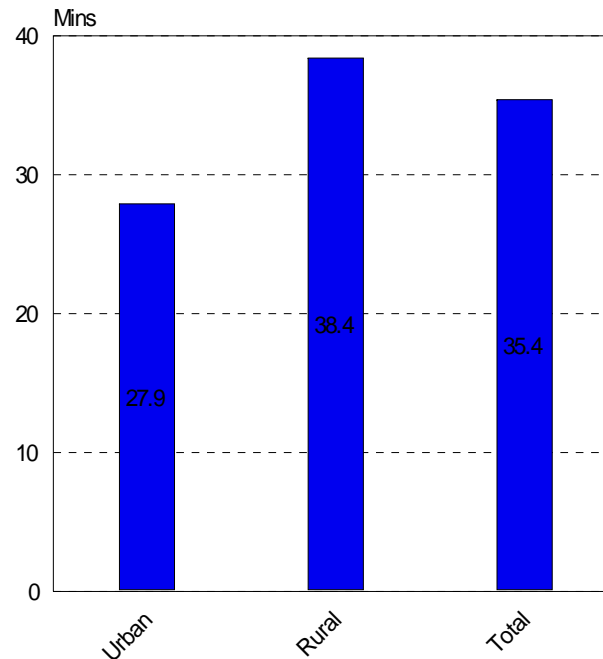
Responsibility for Water Collection, Selected Countries



Source: JMP 2008 (Data used for this graph refers to MICS and DHS Surveys from 35 Developing Countries in 2005 & 2006)

Collecting Water is a Time Consuming Chore

Mean time to source of drinking water, Nigeria, in minutes

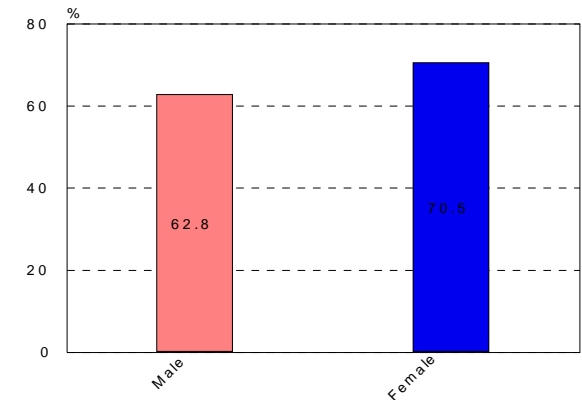


Source: NDHS (2003), (Mean time to source, excluding those with water on premises)

- On average, it takes more than 30 minutes to collect each container of water in Nigeria
- Evidence shows that when water collection time is more than 30 minutes, less water is available for hygiene in households and diarrhoea rates are higher

Women-headed Households are Poorer

Perception of Poverty by Gender Headed Household in Nigeria



Source: CWIQS (2006)⁷

- More female-headed households compared to male-headed household consider themselves poor
- People living in poverty have less access to water

Conclusion

- The collection of water is a great burden, especially for women
- Water Collection task reduces time available for child care, personal development and economic activities
- Only by the collection and analysis of gender disaggregated data will development strategies target women as active and equal partners in the water and sanitation sector
- Water systems function well when men and women are involved in both the planning and management