



## The National Contingency Plan

Formatted: Font: 18 pt, Underline

### INTRODUCTION

The National Contingency Plan adopted the multi-hazard model with focus on hazards with the highest probability of occurrence and severity in Nigeria. These include flood, conflicts, terrorism, drought, and epidemics. The Multi-hazard scenario approach was adopted in order to accommodate predictable and non-predictable hazards, including effects of Climate Change and Climate Variability. While some of the effects of climate change are apparent as witnessed by extreme weather changes, it has been difficult to adequately model the complete range of changes to accurately anticipate its impacts for Nigeria. Though National and Regional Weather agencies predicts that weather changes such as high temperatures and irregular rainfall patterns are likely, it should be anticipated, that the effects would vary from region to region. The multi-hazard contingency plan, therefore, is a first step towards mitigating the impact of quick onset disasters when accurate forecasting is difficult and impact level cannot be ascertained.

The mandate to coordinate disaster management in all its ramifications in Nigeria is vested in the National Emergency Management Agency (NEMA) based on its ACT of Establishment. . Consequently, the multi-scenario based Contingency Plan ensures that coordination of Humanitarian Players and resources towards effective management of disasters is guaranteed under established guidelines as provided in the National Disaster Management Framework (NDMF). Relevant stakeholders can also use the National Contingency Plan as

justification for organisational preparedness using the roles that have been assigned to them in the plan.

Finally, a multi-hazard contingency plan ensures that all sectors in humanitarian responses are addressed and also serves as a link between National, Regional and International humanitarian actors.

### **Background on Nigeria**

Nigeria is a country with a landed area of about 923,768 sq km (356,669 sq miles). It has diverse climate and terrain, which ranges from the equatorial climate of the southern lowlands, through the tropical central hills and plateau, to the arid northern plains which mark the southernmost extent of the Sahara desert.

Two Major rivers run through Nigeria – Niger and Benue. The River Niger flows from the northwest through the country to its vast delta in the south, while River Benue has its source from the Cameroon Mountains and flows into the country from the east joining River Niger at Lokoja in Kogi State (Fig. 1). Nigeria has borders with Niger Republic to the North, Chad (across Lake Chad) to the Northeast, Republic of Cameroon to the East and Republic of Benin to the West. It is indented in the South by the Gulf of Guinea.



Fig 1: Map of Nigeria

Nigeria is Africa's most populous country. It has an official population of 140, 431,790 with an annual growth rate of 2.8% [Federal Republic of Nigeria Official Gazette, 2<sup>nd</sup> February, 2009]. It is divided into 36 states, the Federal Capital Territory (FCT) and 774 Local Government Areas (LGAs). Nigeria has over 250 ethnic groups, with English as the official language and three major indigenous languages (Yoruba, Ibo and Hausa).

One of the highest vulnerability factors in Nigeria is poverty, followed closely by high level of illiteracy and poor infrastructure. Other causative factors include the level of environmental degradation, due to oil exploration, industrial activities and deforestation.

#### **Disasters in Nigeria**

Nigeria, like the rest of the world, is exposed to a wide range of natural or human-induced disasters. While some of these disasters are rapid, others are slow-onset, resulting in catastrophic situations leading to loss of lives, destruction of property and degradation of

the environment. These disasters occur in form of drought, desertification, flooding, epidemics, coastal erosion, dam failure, building collapse, oil spillage, maritime collision or accident, bomb explosion, communal clash, terrorism, fire, air crashes and boat mishap, amongst others.

Historically, salient disasters in Nigeria include the yearly epidemics such as cholera, measles and cerebro-spinal meningitis. There were droughts in the Sudan-Sahel zone of the country in 1972-74 and 1982-84. There were flood disasters in Ogunpa (Oyo State) in 1982; Shiroro and Kaduna in 2003; Gombe in 2004; Jalingo in 2005; and more recently in Sokoto, Kebbi, Jigawa, Ogun, Ibadan and Lagos in 2010/2011. Other disasters include: various landslides in Enugu, Anambra (South East) and Cross River States (South South), Nigeria between and 2005 and 2009. Also, Nigeria experiences numerous ethnic, political and religious violent conflicts in Kaduna, Lagos, Kano, Plateau, Bauchi, Borno, Taraba, Benue, Delta, Anambra, Ondo, Osun, Ogun e.t.c.

In addition, there were occurrences of technological disasters such as: the 2002 Ikeja Military Cantonment Artillery Depot explosion (Lagos State); oil spillage and lead poisoning in Zamfara State 2010; the 1992 Hercules C-130 military air-crash at Itokin (Lagos State); the 2002 ADC air-crash at Ejirin (Lagos State); the EAS air-crash in Kano State; the 2005 Bellview air-crash in Lisa village (Ogun State); the 2005 Sosoliso air crash in Port Harcourt (Rivers State); the ADC air crash in Abuja. Other technological disasters include several pipeline explosions in the Niger Delta, and series of road traffic crashes among others. Recently, there are increases in the act of terrorism occasioned by religious sect (Boko Haram) using Improvised Explosive Device (IED) especially in the North East, North Central and North Western States including the FCT. Similarly, there are also small arms groups and militants with their activities localised in the Niger Delta region of the country.

Beyond these events, threats posed by frequent oil spills and irreparable damage to environmental and coastal biospheres, increasing levels of industrial pollution, waste and unprecedented climatic changes with its negative consequences make Nigeria increasingly at risk to a wide range of new and emerging hazards.

**0.1 HAZARD RISK SCENARIO AND PLANNING ASSUMPTIONS**

**0.1.1 Identified Hazards for Planning Assumptions:** Flood, drought, epidemics, crises and terrorism.

<b>Multi Risk Scenario</b>	
Best case scenario	Pockets of disasters across the country affecting less than 5000 people
Most probable scenario	Identified disasters across Nigeria affecting about 10,000 people
Worst case scenario	Any of the identified disasters and its secondary threats affecting up to 500,000

**Table 1: Disaster Scenarios**

**0.1.2 Scenarios and Planning Assumptions**

	<b>Probability of Occurrence</b>
<b>Flood</b>	Highly probable, based on meteorological information and research on the imminent collapse of Lake Nyos and other human/nature induced activities

	<b>Drought</b>	Highly probable based on Climate Change and Climate Variability report and the impact of Sahelian crises in northern Nigeria.
	<b>Terrorism and Conflicts (Political unrest/ethno religious crises)</b>	Highly probable based on activities of Boko Haram /militia, socio and ethno-religious issues
	<b>Epidemics and other health issues/events</b>	Highly probable, based on 2011 and 2012, epidemic trends, Lassa fever, cholera and CSM. Malnutrition and food insecurity especially in Sahelian States.
<b>Impact</b>	<ul style="list-style-type: none"> <li>▪ 10,000 people likely to be affected</li> <li>▪ Loss of lives</li> <li>▪ Road networks destroyed</li> <li>▪ Bridges washed off</li> <li>▪ Farmlands flooded</li> <li>▪ Loss of livestock</li> <li>▪ Destruction of infrastructure (security infrastructure, schools, houses, health facilities)</li> <li>▪ Pollution of water sources</li> <li>▪ Disease epidemics: Cholera, CSM, Lassa fever, etc.</li> <li>▪ Food insecurity</li> <li>▪ Zonal migration (North-South and vice versa)</li> <li>▪ Loss of livelihoods</li> <li>▪ Traumatization</li> </ul>	
<b>Geographic al areas</b>	Flood	Most parts of the country, including communities bordering River Katsina Ala and River Benue (that will be affected by Lake Nyos collapse), River Niger and communities down streams of major dams in the country
	Drought	North West, North East
	Terrorism/ Conflicts	Most parts of the country
	Epidemics	Most parts of the country, especially NE, NW, NC, and SS

**Table 2: Scenarios and Planning Assumptions**

**0.1.3 Summary Target Population for Planning Assumptions**

<b>Summary of Assumed Target Population for Pre-Positioning</b>	
Total Population	<b>10,000</b>
Number of persons per household	<b>4.8</b>
Total Fertility Rate (%)	<b>5.4</b>
Rate of General Health Assumptions (%)	<b>20</b>
Number for general health assumptions	<b>2,000</b>
Number of births per month	<b>45</b>
Proportion of infants under 1 year (%)	<b>4.0</b>
Number of infants under 1 year	<b>400</b>
Proportion of children aged 6 to 12 months (%)	<b>3.0</b>
Number of children aged 6 to 12 months	<b>300</b>
Proportion of children of 12 to 59 months (%)	<b>12.0</b>

Number of children aged 12 to 59 months	1,200
Proportion of children < 5 years in (%)	15.0
Number of children < 5 years	1,500
Proportion of children aged 3 to 6 years (%)	13.0
Number of children aged 3 to 6 years	1,300
Proportion of children of 9 months to 15 years (%)	48.0
Number of children aged 9 months to 15 years	4,800
Percentage of children of primary school age 6 to 11 years (%)	30.0
Number of children of primary school age 6 to 11 years	3,000
Proportion of pregnant women (%)	8.8
Number of pregnant women	880
Proportion of lactating women (%)	9.0
Number of women lactating	900
Rate of malnutrition, moderate & severe (%)	40.0
Number of children suffering from moderate & severe malnutrition	600
Rate of severe malnutrition among children (%)	12.0
Number of children suffering from severe malnutrition	180
HIV prevalence rate (%)	2.7
Number of people living with HIV/AIDS	270
Rate of sexual violence during the first month of crisis in (%)	1.0
Number of victims of sexual violence in the first months of the crisis	100
Proportion of people traumatized (%)	2.0
Number of people traumatized	200
Proportion of unaccompanied children (%)	1.0
Number of unaccompanied children	100

**Table 3: Summary of Target Population for Planning Assumptions**

**0.1.4 Hazards, Triggers, Early Warning and Monitoring Agencies**

Hazards	Triggers, Early Warning monitoring indicators	Relevant Agencies
Above normal (heavy) Rainfall	Weather forecasts, Information flow on the rainy season, observation of rise in river level	NIMET, River Basin Authorities, ACMAD
Release of water from natural and artificial Impoundments	Alert warning from river basins, alert from EW mechanisms	River Basin Authorities
Terrorism/Conflicts	Politicking, religious uprising, tribal/ethno conflicts and militia/terrorism activities	IPCR, Security Agencies
Drought	Irregular or little rain, biodiversity loss, depletion of genetic pool, crop failure	Federal Ministry of Agric, Department of Strategic Grain Reserve, Federal/States Ministry of

		Environment
Epidemics	Severe weather conditions, rapid urbanization, poor Sanitation, air and water pollution	Federal/State MoH, NIMET RUWASA
Human Induced	Proliferation of indiscriminate and artisanal mining, oil spillage, industrial accidents etc.	Fed. Min of Mines and Steel, FmoH, FMoEnv, NOSRDA

**Table 4: Hazards, Triggers, Early Warning and Monitoring Agencies**

## **0.2 OBJECTIVES, STRATEGIES AND GUIDING PRINCIPLES**

### **0.2.1 Overall Objective**

To ensure that Government and relevant stakeholders develop a timely, consistent, coordinated and planned response for the initial 10 days after a major/catastrophic disaster, to minimize the potential humanitarian, economic and environmental consequences, as well as to ensure the early recovery of affected communities from 2<sup>nd</sup> Quarter 2012 to 2013.

### **0.2.2 Strategies**

The overall objectives would be guided by the following strategies:

- i. National Contingency Plan for emergency preparedness and response.
- ii. Sectoral Response Plans
- iii. Budget and Pre-positioning of emergency supplies

### **0.2.3 Guiding Principles**

Humanitarian assistance will be organized by observing the principles of humanity, neutrality, impartiality and independence. Planned responses will ensure that immediate needs are targeted. In operation, the plan will adopt relevant internationally accepted guiding principles and laws to ensure that rights based approach are emphasized. Therefore, the Humanitarian Charter and Minimum Standards in Disaster Response (SPHERE Project, 2011) will serve as the operational basis for response and provision of humanitarian assistance.

The National Contingency Plan is designed for the initial ten (10) days immediately after a disaster incident of high magnitude, to ensure protection and sustenance of lives within the “golden period”. This plan is based on the premise that Federal Government of Nigeria has a primary responsibility of ensuring protection and responding to the needs of her citizens in emergency and post-emergency situations.

## **0.3 Overall Disaster Management and Coordination**

The National Contingency Plan will build on collaboration with governments, relevant MDAs, military and paramilitary, Police Force, CSOs, International Organizations and the UN system. NEMA will collaborate with relevant agencies to monitor early warning, potential threats and emergency situations to ensure adequate response. In responding to emergencies, additional programmes may be developed to support humanitarian action such as post-incident rehabilitation and recovery efforts within the respective sector.

**0.3.1 Clusters established and designated lead agencies/organizations;**

S/N	Cluster	Lead Ministries/Agencies	Lead UN Agency
1	Camp Coordination and Camp Management	NEMA/SEMA	IOM, UNHCR
2	Food and Nutrition	FMoAgric /SMoAgric/SEMA	WFP/FAO
3	Health and Sexual Reproductive Health/HIV AIDS	FMoH/SMoH/NACA/SACA/LACA	WHO/UNFPA/UNAIDS
4a	Protection	NHRC/MWASD/	UNICEF/UNHCR
4b	Security	Law Enforcement Agencies	UNDSS
5	Basic Education	FMoEdu/SMoEdu/SUBEC	UNICEF and SC(UK)
6	Water, Sanitation and Hygiene	FMoWR/SMoWR/RUWASA	UNICEF
7	Emergency Shelter and NFI	NEMA/SEMA	IFRC and IOM
8	Logistics and Telecommunication	NEMA/SEMA/FMoIC/SMoIC/NCC/State Mass Transit	WFP/UNDP

Table 5: Cluster and Lead Agencies

**0.3.2 National Coordination Mechanisms;**

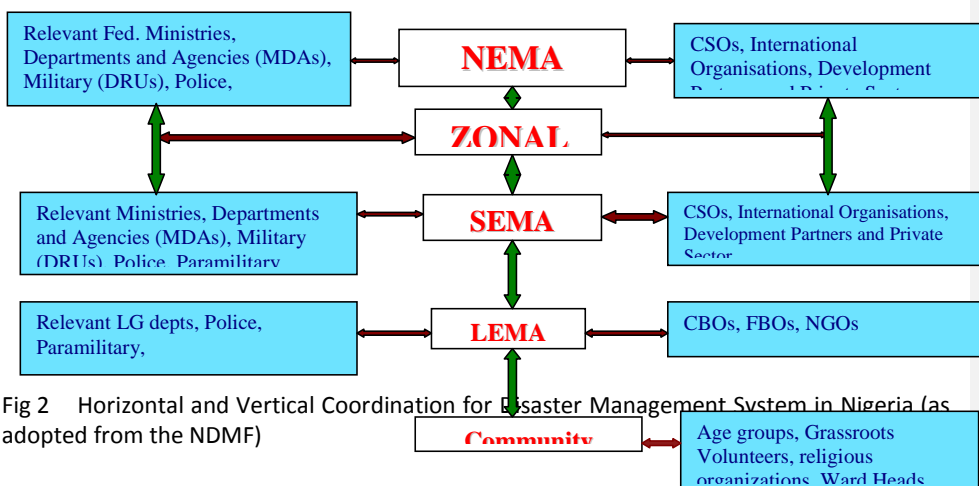


Fig 2 Horizontal and Vertical Coordination for Disaster Management System in Nigeria (as adopted from the NDMF)

### **0.3.3 Appeals and funding;**

NEMA disaster management fund (derived from the Federal Government's share of the Ecological Fund) will serve as the major source of funding for the Contingency Plan. In line with its mandate, NEMA will provide funds for intervention in the initial 10 days of emergencies before other stakeholders activate their sectoral responses. Consequently, NEMA will also collaborate with its development partners for resource mobilizations outside governments during major emergencies.

### **0.3.4 Information and Communication Management**

Information and communication management is an integral part of emergency preparedness and response. Coordinated approach to emergency response requires information sharing, effective communication, clarifications of roles and responsibilities. Therefore for information sharing, the Incident Command System (ICS) will be adopted as contained in the National Disaster Management Framework (NDMF).

## **SECTORAL RESPONSE**

### **1 CAMP MANAGEMENT**

#### **1.0 Introduction**

Camp Management is a critical aspect of managing interventions especially during displacements induced by disasters. The need for the establishment of proper and well coordinated camp management system for effective and efficient response to emergencies is critical. This is because the success or failure of humanitarian interventions is dependent on the quality of camp management implementation.

#### **1.1 Sectoral Objective**

To ensure quality, timely, efficient and effective camp administration, including stakeholders` coordination and management in line with international standards.

## **1.2 Operational Objectives**

- i. To ensure coordination of camp arrangement and administration for internally displaced persons (IDP).
- ii. To understand the core function of the lead agencies and supporting agencies as well as their roles during interventions.

Sector Name: Camp Management				
Strategies	Requirements	Currently Available/Deployed Activity	Operational Constraint and Gaps	ACTORS
<b>Emergency Preparedness</b>	<ul style="list-style-type: none"> <li>- Coordination meetings</li> <li>- Quarterly meetings</li> <li>- Coordinating the pre-positioning of emergency supplies</li> <li>- Training and Simulation exercises</li> <li>- Linkages with other sectors</li> <li>- Channels of Communication with other stakeholders should be established</li> </ul>	<ul style="list-style-type: none"> <li>- Existing Permanent Camps- UN Camp Abuja, IDP Camp Bauchi, Bakassi Camp Cross River State, Lagos Camp Agbowa Ikosi, Returnees Camp Oru-Ijebu, Ogun State</li> <li>- Permanent and temporary tent shelters deployed. Public utilities (water, lavatories, electricity, security, health etc)</li> </ul>	<ul style="list-style-type: none"> <li>- Bureaucracy, Lack of Funds, Transparency, lack of functionality and capacity of some SEMAs, lack of Logistic supports, lukewarm cooperation from other stakeholders,</li> </ul>	NEMA, SEMA, Health, Security Agencies, Red Cross, NGOs, Host Communities, International Development Partners, NAPTIP, NCR, etc
<b>Minimum Response</b>	<ul style="list-style-type: none"> <li>- Rapid Assessment of the situation of IDPs and of existing facilities and infrastructures</li> <li>- Send out report of Assessment and Appeals for fund</li> <li>- Registration and segregation of IDPs on basis of gender, age, vulnerability and status</li> <li>- Identification of Camp sites</li> <li>- Mobilization of sector specific human and material resources</li> </ul>	<ul style="list-style-type: none"> <li>- Deployment of temporary tent shelters with water, lavatories, electricity, health etc)</li> <li>- Activation of Permanent Camps</li> <li>- Invite stakeholders and other actors for emergency meeting/deployments</li> </ul>	<ul style="list-style-type: none"> <li>- Bureaucracy, Lack of Funds, Transparency, lack of functionality and capacity of NEMA/SEMAs and other stakeholders, lack of Logistic supports, lukewarm cooperation from other stakeholders, unruliness of camp residents</li> </ul>	NEMA, SEMA, Health, Security Agencies, Red Cross/Crescent, NGOs, Host Communities, International Development Partners, NAPTIP, NCR, etc

<ul style="list-style-type: none"> <li>- <b>Comprehensive Response</b></li> </ul>	<ul style="list-style-type: none"> <li>- Stockpiling relief materials</li> <li>- Periodic reassessment of needs of the camp residents and personnel</li> <li>- Send out periodic report of Assessments and further Appeals</li> <li>- Further Mobilization of sector specific human and material resources</li> </ul>	<ul style="list-style-type: none"> <li>- Management of camp activities</li> <li>- Planning for closure and decommissioning of camp</li> </ul>	<ul style="list-style-type: none"> <li>- Bureaucracy, Lack of Funds, Transparency, lack of functionality and capacity of some SEMAs, lack of Logistic supports, lukewarm cooperation from other stakeholders, unruliness of camp residents</li> </ul>	<p>NEMA, SEMA, Health, Security Agencies, Red Cross/Crescent, NGOs, Host Communities, International Development Partners, NAPTIP, NCR, etc</p>
---	---	---	---	--

**Table 6: Camp Management**

## **2. BASIC EDUCATION**

### **2.0 Introduction**

Education in Emergency (EiE) is a programme recommended by International Network for Education in Emergency (INEE) as a critical part of effective response to situations of displacements due to human/natural hazard induced disasters leading to disruption in regular school activities. It has been established that interruption of Basic Education even for a short period can drastically affect cognitive memory, reduce learning and further expose children to psycho-social trauma. Level of preparedness will help to reduce the impact of emergencies on children. When properly implemented, EiE can also motivate affected population to commence livelihood activities and reduce tension within camp environment.

### **2.1 Sectoral Objective**

- i. To ensure that children's education is not disrupted.
- ii. To ensure that children are occupied meaningfully to avoid restiveness and to allow them to fit easily into the general academic programme of the communities after the camping period.

### **2.2 Operational Objectives**

- i. Carry out sectoral objectives by actively involving the Federal Ministry of Education, State Ministry of Education and SUBEB.
- ii. Ensure availability of trained teachers in Disaster Risk Reduction, Classrooms and learning materials

Sector Name: BASIC EDUCATION				
Strategies	Requirements	Currently Available/Deployed Activity	Operational Constraint and Gaps	ACTORS
Emergency Preparedness	<ul style="list-style-type: none"> <li>- Coordination and Quarterly meeting</li> <li>- Identify and train teachers on DRR issues and emergency preparedness/response</li> <li>- Prepositioning of tents and learning materials e.g. School in-box/kits, Arts and crafts/tools</li> <li>- Prepositioning of Recreational facilities/items e.g. games, child friendly materials, story-books</li> <li>- Training of Child/community facilitators or guidance and counselling</li> </ul>	<ul style="list-style-type: none"> <li>- Tents</li> <li>- Trained teachers /children in DRR/First Aid</li> <li>- Trained Community facilitators</li> </ul>	<ul style="list-style-type: none"> <li>- Difficulties in coordination mechanism</li> <li>- Inadequate Educational Materials</li> </ul>	NEMA FMoED SMoE SUBEB, NERDC
Minimum Response	<ul style="list-style-type: none"> <li>- Joint rapid assessment by relevant agencies</li> <li>- Identification of separated/unaccompanied children</li> <li>- Educating children on initial security and safety needs in camps</li> <li>- Initial awareness raising around hygiene and sanitation</li> </ul>	<ul style="list-style-type: none"> <li>- Rapid assessment tools</li> <li>- Availability of trainers</li> </ul>	<ul style="list-style-type: none"> <li>- Parents refusing to release their children for EIE</li> <li>- Finding conducive teaching environment for the children</li> </ul>	FMoED SMoE SUBEB, International Organisations
Comprehensive Response	<ul style="list-style-type: none"> <li>- Establishment of Child-friendly learning Spaces in Camps</li> <li>- Delivery of educational materials to camps</li> <li>- Promotion of learning activities</li> <li>- Training in arts/crafts</li> <li>- Recreational facilities</li> </ul>	<ul style="list-style-type: none"> <li>- Continuous teaching</li> <li>- Provision of teaching materials</li> </ul>	<ul style="list-style-type: none"> <li>- Integrating emergency education with the normal school curricula</li> </ul>	FMoED SMoE SUBEB, International Organisations

**Table 7: Basic Education**

### **3. FOOD AND NUTRITION**

#### **3.0 Introduction**

Food and Nutrition provision has been considered to be one of the key components to save lives and reduce human suffering in emergencies. Depending on scale and magnitude of the disaster, affected population may suffer hunger and malnutrition, thereby increasing the risk of diseases and deaths.

#### **3.1 Sectoral Objective**

To reduce human suffering and risks of deaths during emergency situations through provision of adequate and quality food that meets daily nutritional requirements.

#### **3.2 Operational Objectives**

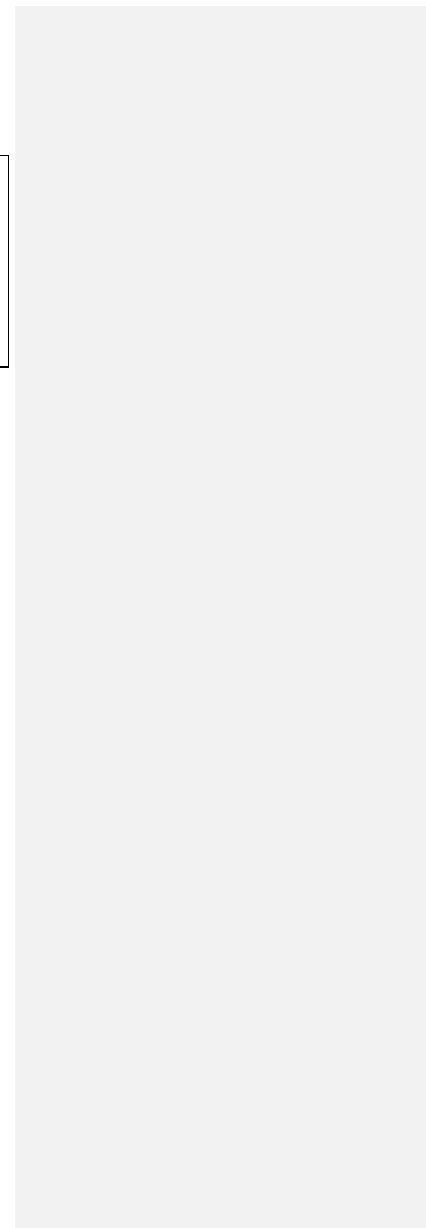
- i. To ensure availability of food items that meets the daily food intake of affected population during emergencies.
- ii. To ensure that, the affected populations are well fed with cognisance to special needs for children, PLWHAs etc.
- iii. To reduce the risk of sickness and diseases such as marasmus, kwashiorkor, beriberi etc.

Sector Name: <b>FOOD AND NUTRITION</b>				
Strategies	Requirements	Currently Available/Deployed Activity	Operational Constraint and Gaps	ACTORS
Emergency Preparedness	<ul style="list-style-type: none"> <li>- Coordination Meetings with Stakeholders</li> <li>- Quarterly meetings</li> <li>- Monitor emergency triggers Identify sources and survey of prices of food items (Pre-position food supply)</li> <li>- Capacity building on nutritional needs of PLWHA &amp; Guidelines on new infant feeding and its use</li> <li>- Community Mobilization</li> <li>- Sensitization and Awareness creation</li> <li>- Scale-up nutrition/prevention needs of support groups</li> </ul>	<ul style="list-style-type: none"> <li>- MoUs with food suppliers</li> <li>- Identify and sourcing for food supplies and storage structures</li> <li>- Disseminating existing guidelines on nutrition for PLWHA</li> <li>- Contingency food supplies from NEMA and SEMAs Warehouses</li> </ul>	<ul style="list-style-type: none"> <li>- Inadequate funding</li> <li>- Inadequate nutrition assessment kits</li> <li>- Inadequate technical skills on nutrition assessment and food utilization</li> <li>- Limited awareness and capacity on nutritional needs of PLWHA especially in emergencies</li> </ul>	Ministry of Agriculture; FMOH Research Institutes and universities of agric; Nutritionist; Dieticians; Community Leaders; Cooperatives Societies; NIMET; NEMA; SEMA; NACA, SACA, LACA; NGOs, FMOI/FOI, FBOs
Minimum Response	<ul style="list-style-type: none"> <li>- Situational analysis – nutrition assessment</li> <li>- Provision of wet ration to beneficiaries</li> <li>- Provide Sufficient Food (therapeutic)</li> <li>- Provision of Breast milk supplement for children</li> </ul>	<ul style="list-style-type: none"> <li>- Mobilization and deployment of food items to affected areas</li> <li>- Classification of food needs for the different groups, e.g. children, PLWHA, pregnant women</li> <li>- Distribution of food items to affected population</li> <li>- Monitoring food distribution to affected population</li> </ul>	<ul style="list-style-type: none"> <li>- Unruliness of camp residents.</li> <li>- Some of the food items may expire or go bad and become unfit for consumption</li> <li>- High cost of food materials due to scarcity in the affected</li> </ul>	Ministry of Agriculture; FMOI Research Institutes and universities of agric; Nutritionist; Dieticians; Community

	<p>who are already on substitute before the emergency</p> <ul style="list-style-type: none"> <li>- Support and protect food security of HIV/AIDS infected/affected and at risk Household or groups</li> <li>- Establishment of gender friendly food distribution procedures</li> <li>- Implementation of the Infant Feeding and other Guidelines on Camps</li> </ul>	<ul style="list-style-type: none"> <li>- Provide rationing guide for PLWHA</li> </ul>	<p>areas.</p> <ul style="list-style-type: none"> <li>- Scarcity of therapeutic food for PLWHA (plumpy nuts or alternative)</li> </ul>	<p>Leaders; Cooperatives Societies; NAFDAC, NIMET; NEMA; SEMA; NACA, SACA, LACA; NGOs, FBOs,</p>
Comprehensive Response	<ul style="list-style-type: none"> <li>- Nutrition Education</li> <li>- Nutritional Impact Assessment</li> <li>- Targeting vulnerable groups for Agricultural extension programs</li> <li>- Collaborate with communities and home based care programmes in providing nutritional support</li> <li>- Rehabilitate the infected/affected into their normal way of life</li> <li>- Empowerment initiatives for women and youth</li> </ul>	<ul style="list-style-type: none"> <li>- Inventory of food items</li> <li>- Continuous distribution of food items</li> <li>- Availability of Home based care and Orphan and Vulnerable Children (OVC) programmes</li> </ul>	<ul style="list-style-type: none"> <li>- Delayed closure / extension of camp period</li> <li>- Lack of strategy on long term food security for PLWHA</li> <li>- The need for enhanced strategies targeting vulnerable groups for Agricultural extension programs</li> </ul>	<p>Ministry of Agriculture; Research Institutes and universities of agric; Nutritionist; Dieticians; Community Leaders; Cooperatives Societies; NIMET; NEMA; SEMA; NACA, SACA, LACA; NGOs, FBOs.</p>

	<ul style="list-style-type: none"><li>- Continuous advocacy to stakeholders on food security and nutrition</li><li>- Partnership among actors and stakeholders</li></ul>			
--	--	--	--	--

Table 8: Food and Nutrition



## **4. LOGISTICS AND TELECOMMUNICATION**

### **4.0 Introduction**

The provision of humanitarian services during emergencies depends largely on the availability of effective operational logistic support and functional telecommunication system. Effective logistic support relies on transportation and storage facilities while effective communication amongst the response agencies depends on the establishment of efficient alternative telecommunication system and trained personnel.

### **4.1 Sectoral Objective:**

To provide effective logistics and telecommunication services for quality service delivery to the affected population.

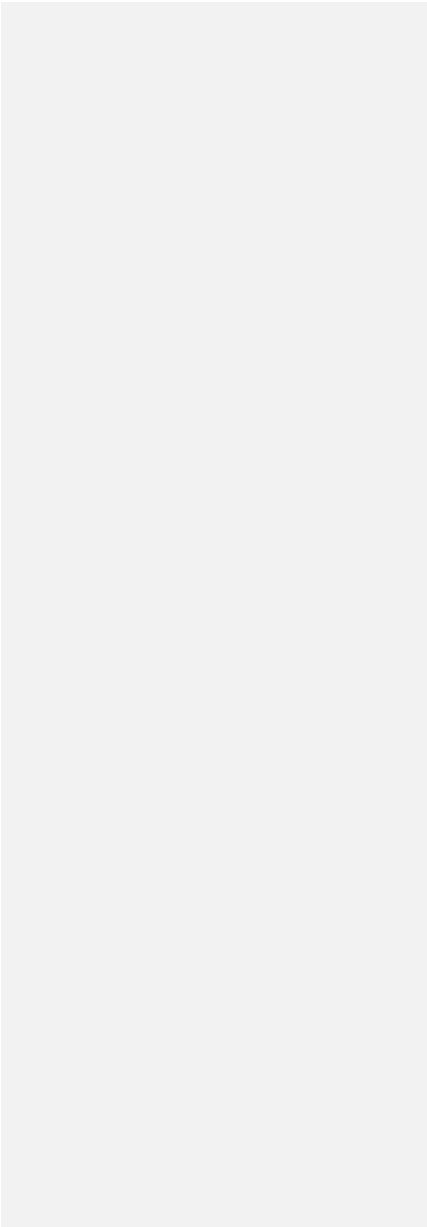
### **4.2 Operational Objectives:**

The overall operational objectives of this sector are, to ensure that:

- i. To ensure efficient and effective logistic systems are provided during emergencies
- ii. To ensure appropriate logistical mapping and contractual agreement/MoUs are established ahead of needs
- iii. To ensure efficient and effective telecommunication redundancy are planned, tested and simulated ahead of emergencies.

<b>Sector Name: Telecommunication</b>				
<b>Strategies</b>	<b>Requirements</b>	<b>1. Currently Available/Deployed Activity</b>	<b>2. Operational Constraint and Gaps</b>	<b>3. ACTORS</b>
4. Emergency Preparedness	<ul style="list-style-type: none"> <li>- Coordination meetings,</li> <li>- Quarterly meetings,</li> <li>- Simulation exercises,</li> <li>- equipment procurement,</li> <li>- personnel training</li> <li>- Emergency response telephone number</li> <li>- Developing data base of available communication equipment of stakeholders</li> </ul>	<ul style="list-style-type: none"> <li>- 30 HF equipment</li> <li>- 7No. BYGAN available</li> </ul> <p>5. Emergency Response Team (ERT) GSM phones</p>	<ul style="list-style-type: none"> <li>- need 70 HF and VHF</li> <li>- need for regular meeting with PTOs</li> <li>- need 7 more Bygans</li> <li>- repeaters</li> <li>- lack of inter-connectivity of communication equipment among stakeholders</li> </ul>	6. NEMA, SEMA, NCC, FMOIC, PTOs, Security Agencies
7. Minimum Response	<ul style="list-style-type: none"> <li>- emergency communication masts,</li> <li>- provision of Laptops, backup battery, UPS, HF/VHF radios and frequency/channel, satellite telephones, BYGAN, portable VSat, PAS, GPS, internet modems etc.</li> </ul>	<ul style="list-style-type: none"> <li>- Erection of emergency communication masts,</li> </ul> <p>8. deployment of Laptops, backup battery, UPS, HF/VHF radios and frequency/channel, satellite telephones, BYGAN, portable VSat, PAS, GPS, internet modems etc</p>	<ul style="list-style-type: none"> <li>- Jammed network,</li> <li>- Use of different frequencies by different organisations</li> <li>- Non provision of expected prepositioning</li> </ul>	9. NEMA, SEMA, NCC, FMOIC, PTOs, Security Agencies

10. Comprehensive Response	11. Alternative power supply, maintenance of temporary telecommunication facilities	12. Manpower, 13. Provision of alternative power supply (generators, solar power)	<ul style="list-style-type: none"> <li>- Funds</li> <li>- Convincing stakeholder to adopt integrated communication systems</li> <li>- Power generators</li> </ul>	14. NEMA, SEMA, NCC, FMoIC, PTOs, Security Agencies, PHCN
----------------------------	---	--	---	---



<b>Sector Name: Transportation</b>				
<b>Strategies</b>	<b>Requirements</b>	<b>Currently Available/Deployed Activity</b>	<b>Operational Constraint and Gaps</b>	<b>ACTORS</b>
Emergency Preparedness	<ul style="list-style-type: none"> <li>- Coordination meetings,</li> <li>- Quarterly meetings</li> <li>- Having MoU with transporters and airline operators, Construction Companies</li> <li>- International Disaster Response Law (IDRL)</li> </ul>	NURTW, NARTO, Abuja UMT, Search and Rescue boats, FRSC vehicles, MOU with helicopters' owners	Lack of MoU with transporters. - Domestication of International Disaster Response Law (IDRL) in Nigeria	NURTW, NARTO, FRSC, NEMA, SEMA, NPF, MIL, Construction Companies
Minimum Response	50 Trucks 30 Buses 30 Ambulances 30 SAR vehicles 6 Helicopters	20 Trucks 20 Buses 30 FRSC Ambulances 8 SAR vehicles 1 helicopter	30 Trucks 10 Buses Nil 22 SAR vehicles 5 Helicopters	NURTW, NARTO, NEMA, FRSC, MT, Construction Companies
Comprehensive Response	Regular meeting with relevant stakeholders	Meeting with NURTW, NARTO, FRSC, NPF	Lack of regular meeting	NURTW, NARTO, FRSC, NEMA, SEMA, NPF, MIL, Construction Companies

Sector Name: Warehouse				
Strategies	Requirements	Currently Available/Deployed Activity	Operational Constraint and Gaps	ACTORS
Emergency Preparedness	<ul style="list-style-type: none"> <li>- MOUs with Stakeholders</li> <li>- Arrangement for Renting additional warehouses</li> <li>- Identify available warehouses</li> <li>- 12 warehouses</li> <li>- 7 forklifts</li> <li>- Pallets for warehouses</li> <li>- Required lightening</li> <li>- Security</li> <li>- Fumigation</li> </ul>	<ul style="list-style-type: none"> <li>- 10 warehouses Available in Abuja, Maiduguri, Jos, Lagos, Kaduna, Enugu</li> <li>- 80% pallets available</li> <li>- Contract with fumigation companies</li> </ul>	<ul style="list-style-type: none"> <li>- No MOUs</li> <li>- No arrangement for rentage</li> <li>- 2 warehouses</li> <li>- 7 forklifts</li> <li>- 20% pallets for warehouses</li> <li>- 7 Generators Security for Port Harcourt ware house.</li> </ul>	NEMA, SEMA
Minimum Response	<ul style="list-style-type: none"> <li>- Activation of MoUs</li> <li>- Logistic rapid assessment</li> <li>- Route mapping</li> <li>- Training of volunteers</li> </ul>	<ul style="list-style-type: none"> <li>- Availability of trucks for logistics</li> <li>- Loading and off loading by volunteers</li> <li>- Security for warehouses</li> </ul>	<ul style="list-style-type: none"> <li>- Lack of MoUs</li> <li>- Lack of capacity for logistic rapid assessment</li> <li>- Proper route mapping</li> <li>-</li> </ul>	NEMA, SEMA
Comprehensive Response	<ul style="list-style-type: none"> <li>- Review Meetings with stakeholders</li> <li>- Update MOUs</li> <li>- Proper stacking of material</li> <li>- FIFO/LIFO</li> <li>- Fumigation</li> </ul>	<ul style="list-style-type: none"> <li>- Stacking of material</li> <li>- FIFO/LIFO</li> <li>- Fumigation</li> </ul>	<ul style="list-style-type: none"> <li>- Poor coordination of stakeholders</li> <li>- Inadequate ware houses</li> <li>- Poor security arrangement</li> </ul>	NEMA, SEMA

## **5 SECURITY**

### **5.0 Introduction**

Security of lives and properties during emergencies determines to a large extent, the ability of the affected population as well, as the humanitarian service providers to receive services in line with every aspect of the Contingency Plan. The law enforcement Agencies are saddled with the responsibilities of maintaining law and order, cordoning of disaster areas, establishment of check points and maintenance of safe routes (passages) among others.

### **5.1 Sectoral Objectives**

To ensure that adequate security is provided in a disaster or crises area in order to safeguard lives, properties and prevent , document , prosecute abuse of IDPs.

### **5.2 Operational Objectives**

- i. To ensure the security and safety of life and properties
- ii. To enforce law and order
- iii. To liasse with appropriate authorities for special security needs including reinforcement of police or military presence in crisis situations.

Sector Name: Security				
Strategies	Requirements	Currently Available/Deployed Activity	Operational Constraint and Gaps	ACTORS
Emergency Preparedness	<ul style="list-style-type: none"> <li>- Facilitate coordination meetings of law enforcement agencies</li> <li>- Quarterly meetings</li> <li>- Capacity building for law enforcement agencies(Training)</li> <li>- Regular simulation exercise</li> <li>- Meetings between civilians and military (CIMIC) stakeholders</li> <li>- Establishment of crisis/disaster response unit in the various law enforcement agencies</li> <li>- Fire fighting equipment should be in place</li> </ul>	<ul style="list-style-type: none"> <li>- Capacity building for law enforcement agencies on humanitarian response/IHL/IHRL (International Humanitarian Law/ International Human Right Law)</li> <li>- Regular simulation exercises</li> <li>- crisis/disaster response unit in the various law enforcement agencies</li> </ul>	<ul style="list-style-type: none"> <li>- weak cooperation/ synergy among law enforcement agencies and other responders</li> <li>- Inadequate capacity building for law enforcement agencies and responders</li> <li>- Inadequate awareness creation on emergency response.</li> <li>- Inadequate funding</li> <li>- Inadequate operational guidelines/procedure on emergency management issues</li> <li>- Poor implementation of policies and legislations</li> <li>- Bureaucratic bottlenecks</li> </ul>	NEMA, SEMA, LEMA, Law enforcement agencies, host community, affected population, Federal and States Fire Services
Minimum Response	<ul style="list-style-type: none"> <li>- Law enforcement agencies must be on ground</li> <li>- There must be ground rules and regulations (Code of Ethics)</li> <li>- Establishment and manning of routes(way in/way out)</li> <li>- 24 hours surveillance</li> <li>- Conduct searches(to discourage people from bringing harmful objects or weapons into the camp)</li> <li>- Security lights/flood lights must be installed.</li> </ul>	<ul style="list-style-type: none"> <li>- Law enforcement agencies are always on ground</li> <li>- There is always ground rules and regulations</li> <li>- Routes (way in/way out) are always established and manned.</li> <li>- 24 hours surveillance</li> <li>- searches are always conducted(to avoid people bringing in harmful objects or weapons)</li> </ul>	<ul style="list-style-type: none"> <li>- weak cooperation/ synergy among law enforcement agencies and other responders</li> <li>- Inadequate funding</li> <li>- Bureaucratic bottlenecks</li> <li>- Inadequate communication equipments</li> <li>- Weak information sharing mechanism</li> <li>- Turf protection</li> </ul>	NEMA, SEMA, LEMA, Law enforcement agencies, host community, affected population, Federal and States Fire Services

	<ul style="list-style-type: none"> <li>- Communication equipment (walkie talkie, radio, BYGAN ) must be available</li> <li>- Establishment of security check points/ security post</li> </ul>	<ul style="list-style-type: none"> <li>- Security lights/flood lights are usually installed</li> <li>- Communication equipment (walkie talkie, radio BYGAN etc) are available</li> <li>- Availability of security check points/ security post</li> </ul>		
Comprehensive Response	<ul style="list-style-type: none"> <li>- Law enforcement agencies must be on ground</li> <li>- There must be ground rules and regulations (Code of Ethics)</li> <li>- Establishment and manning of routes(way in/way out)</li> <li>- 24 hours surveillance</li> <li>- Conduct searches(to discourage people bringing in harmful objects or weapons into the camp)</li> <li>- Security lights/flood lights must be installed.</li> <li>- Communication equipment(walkie talkie, radio, BYGAN etc) must be available</li> <li>- Establishment of security check points/security post</li> </ul>	<ul style="list-style-type: none"> <li>- Law enforcement agencies are always on ground</li> <li>- There is always ground rules and regulations</li> <li>- Routes (way in/way out) are always established and manned.</li> <li>- 24 hours surveillance</li> <li>- searches are always conducted(to avoid people bringing in harmful objects or weapons)</li> <li>- Security lights/flood lights are usually installed</li> <li>- Communication equipment (walkie talkie, radio BYGAN etc) are available</li> <li>- Availability of security check points/ security post</li> </ul>	<ul style="list-style-type: none"> <li>- weak cooperation/ synergy among law enforcement agencies and other responders</li> <li>- Inadequate funding</li> <li>- Bureaucratic bottlenecks</li> <li>- Inadequate communication equipments</li> <li>- Weak information sharing mechanism</li> <li>- Turf protection</li> </ul>	NEMA, SEMA, LEMA, Law enforcement agencies, host community, affected population, Federal and States Fire Services

Table 10: Security

## 6 PROTECTION

### 6.0 Introduction

Protection issues especially in disasters leading to mass displacement of people can have significant impact on the affected population when inadequately managed. It is important to acknowledge the different vulnerabilities, needs and capacities of affected groups. Factors such as gender, age, disability and HIV/AIDS status, increase vulnerabilities and affect the ability of people to cope. Particularly, women, children, the aged and PLWHA may suffer specific disadvantages in coping with a disaster and may face cultural and social barriers in accessing services and other support to which they are entitled. Frequently, ethno-religious or political affiliation and displacement also predispose certain people to risk. Failure to recognize the differing needs of vulnerable groups and the challenges they face in gaining equal access to appropriate services and support can result to further marginalization or denial.

### 6.1 Sectoral Objective

- i. To ensure special protective measures and care are provided for most vulnerable population in emergencies.
- ii. To ensure that issues of equity, diversity, and other non-discriminatory principles are observed during provision of humanitarian services to displaced persons.
- iii. To ensure rights to dignity and preservation of worth/ esteem (human rights) is adequately protected
- iv. **To ensure rights of children to a safe environment is guaranteed, including facilitating child tracing, registration and establishment of safe “playing areas” within camp environments.**

### 6.2 Operational Objectives

- i. To ensure the protection of vulnerable groups especially women, children, the aged, PLWAs and physically challenged from abuse, exploitation, neglect, harm, exploitation, abduction, recruitment into fighting forces, sexual violence, lack of opportunity to participate in decision making.

- ii. To ensure proper documentation and effective reporting system are in place to aid investigation and intervention.
- iii. To ensure the provision of social welfare services for the affected population.

Sector Name: Protection				
Strategies	Requirements	Currently Available/Deployed Activity	Operational Constraint and Gaps	ACTORS
Emergency Preparedness	<ul style="list-style-type: none"> <li>- Coordination and Quarterly meetings to compile, adapt and enforce existing national and international protocol and laws on human rights protection Mapping of HIV in emergency stakeholders, systems and structures by state</li> <li>- Mobilise/sensitise Child protection networks and capacity building of FMWASD, responders/aid workers on prevention and response to Gender violence, code of conduct on sexual exploitation, post rape care to protect Vulnerable groups (women, children, aged, physically challenged, PLWHAs, etc) in disaster/emergency situations</li> <li>- Develop/adapt relevant messages on prevention of gender violence, sexual exploitation in emergencies</li> <li>- Sensitization /awareness creation on the rights of individuals, PLWHA, victims of sexual violence with youth groups, women groups, NGOs, media, opinion leaders (through awareness campaigns, community outreaches, electronic and print media)</li> <li>- Develop/adapt an orientation manual on prevention of gender violence, sexual exploitation, life skills and HIV prevention for</li> </ul>	<ul style="list-style-type: none"> <li>- Child protection networks existing in some states Child Rights ACT passed at the national level and in some states.</li> <li>- NAPTIP providing services for trafficked children and women</li> <li>- SBCC strategy available111 NGOs trained on SBCC and Minimum prevention package intervention by NYNETHA using Global Fund round 9</li> <li>- Existing NPTWG and SPTWG in some states that coordinate prevention activities.</li> <li>- Police has gender and child friendly desks in some states (work in collaboration with NAPTIP)</li> </ul>	<ul style="list-style-type: none"> <li>- Bureaucracy</li> <li>- Inadequate training</li> <li>- Inadequate skilled personnel</li> <li>- People living with disabilities and the elderly usually find it difficult to use facilities provided at camps</li> <li>- Weak implementation of policies/legislation and systems for service provision for people with disability</li> <li>- Inadequate funding</li> <li>- Inadequate facilities and working tools</li> <li>- Weak coordination of HIV in emergency stakeholders</li> <li>- Non availability of data on HIV response in emergencies from previous camp activities (number of people on camp disaggregated by sex and age, access to</li> </ul>	<p>NEMA, SEMA, LEMA, FMWASD, NDLEA, NAPTIP, NHRC, NPS, NPF, Red cross, Save the Children, NYNETHA, NGOs and CSOs</p>

	<p>women and, adolescents and other vulnerable groups (to be lead by NYNETHA in collaboration with NACA)</p> <ul style="list-style-type: none"> <li>- Stockpiling aids and appliances including HIV related supplies like male and female condoms, SBCC materials), for affected population, including the vulnerable group.</li> <li>- Meeting/Planning with social service providers</li> <li>- Adequate training</li> <li>- Social workers and other relevant Agencies should establish network on Disaster Response and management</li> </ul>		<p>HCT, ARVs, condoms, post rape care etc)</p> <ul style="list-style-type: none"> <li>- Law enforcement agencies do not have adequate knowledge of existing human rights laws and the responsibilities conferred on them</li> </ul>	
Minimum Response	<ul style="list-style-type: none"> <li>- Provision of secured and safe spaces/services in camps</li> <li>- Setting up Advocacy centres</li> <li>- Reception and documentation</li> <li>- documentation for tracing and restoring family links</li> <li>- Counselling and psycho-social support for affected persons and responders</li> <li>- Equitable access to facilities and services</li> <li>- Enforcement of human rights law</li> <li>- Awareness and sensitization on prevention of sexual exploitation using developed SBCC materials</li> <li>- Mobilization of trained staff on camp to establish camp committees for protection of vulnerable groups and legal aid services</li> </ul>	<ul style="list-style-type: none"> <li>- Secured and safe spaces/services in camps</li> <li>- Reception and documentation area</li> <li>- Documentation for tracing and restoring family links</li> <li>- Counselling and psycho-social support for affected persons and responders</li> <li>- Awareness on usage and provision of condoms NGOs already trained on prevention and SBCCHIV prevention with young people training materials and modules, life skills, peer</li> </ul>	<ul style="list-style-type: none"> <li>- Limited Advocacy centres</li> <li>- Poor documentation for tracing and restoring family links</li> <li>- Poor capacity in responding to HIV in emergencies</li> </ul>	<p>NEMA, SEMA, LEMA, NDLEA, NAPTIP, NHRC, NPS, and CSOs NPF, Red cross, Save the Children, NYNETHA, NGOs and CSOs</p>

	<ul style="list-style-type: none"> <li>- Orientation training for women, adolescent and other vulnerable groups on prevention of gender violence, sexual exploitation, life skills and HIV prevention for women and, adolescents and other vulnerable groups</li> <li>- Availability and access to condoms</li> </ul>	education already existing		
Comprehensive Response	<ul style="list-style-type: none"> <li>- Documentation matrix for IDPs should be disaggregated by gender, age etc</li> <li>- Refresher training for social workers and other relevant stakeholders on human right approach to disaster management</li> <li>- Awareness and provision of condoms</li> <li>- Ensure enforcement and strengthening of Human Rights laws and protection systems and structures in the community</li> <li>- Ensure feedback mechanisms on the reported cases of discrimination and rights violation</li> <li>- Initiated best practices in rights protection (especially in relation to HIV in emergencies)</li> </ul>	<p>Continuous sensitisation on usage and provision of condoms</p> <p>Continuous updating of data base</p>	Poor documentation Weak enforcement of human rights laws and protection system	<p>NEMA, SEMA, LEMA, NDLEA, NAPTIP, NHRC, NPS, and CSOs NPF, Red cross, Save t he Children, NYNETHA, NGOs and CSOs</p>

Table 11: Protection

## **7. Water, Sanitation and Hygiene (WASH)**

### **7.0 Introduction**

Water and Sanitation during emergencies is especially vital to successful intervention irrespective of the type, nature or magnitude of the disaster. Provision of safe water and sanitation reduce the risk of secondary threats such as epidemics, diseases and other health-related challenges in camp environment. The risks of water-borne diseases are more pronounced during emergencies. Therefore, water, Sanitation and hygiene practices are critical determinants for survival in the initial stages of any disaster.

#### **7.1 Sectoral Objective:**

To ensure availability and access to safe water, sanitation facilities and information on hygiene practices during emergencies.

#### **7.2 Operational Objectives:**

- i. To provide safe and adequate water (15L/capita/day of water) supply to affected population,
- ii. To ensure effective sanitation in and out of camp environments during displacement or epidemic situation including mass casualties.
- iii. To ensure effective hygiene practices and hygiene education for the affected population.

Sector Name: WASH				
Strategies	Requirements	Currently Available/Deployed Activity	Operational Constraint and Gaps	ACTORS
Emergency Preparedness:	<ul style="list-style-type: none"> <li>- Coordination and Quarterly meeting with stakeholders</li> <li>- Identification of Sectoral agencies/partners</li> <li>- Planning &amp; Budgeting</li> <li>- MoUs with Companies, Vendors, Suppliers</li> <li>- Capacity Building &amp; Refresher Training</li> <li>- Simulation exercises(Bi-annually)</li> <li>- Quarterly Updating of CP</li> </ul>	<ul style="list-style-type: none"> <li>-Coordination meeting with stakeholders</li> <li>- 7 Portable treatment plants</li> <li>- 7 Water tankers</li> <li>- 7 Mobile portable treatment plants</li> <li>-10 Mobile toilets</li> </ul>	<ul style="list-style-type: none"> <li>- Lack of cooperation from some relevant stakeholders in developing CP</li> <li>- Inadequate prepositioning of supplies</li> <li>- Simulation exercises(Bi-annually)</li> </ul>	<p>FMoWR, FMoH, NEMA, UNICEF, Red Cross, SC(UK), FMoE, WHO, Water Aid,SEMA, SMOWR, SMOH, NEWSAN</p>
Minimum Response	<ul style="list-style-type: none"> <li>- Rapid assessment</li> <li>- Activation of WASH response coordination</li> <li>- Trucking of water (Trucks from Local Government Councils, Water Boards, and Private companies) combined with treatment at storage and point of use levels.</li> <li>- Deployment of emergency latrines</li> <li>- Distribution of soap and sensitization on hygiene</li> <li>- Distribution of water treatment tablets</li> </ul>	<ul style="list-style-type: none"> <li>-Deployment of mobile water treatment</li> <li>-Deployment of jerrycans, soaps, water purification tablets</li> </ul>	<ul style="list-style-type: none"> <li>-Coordination may be difficult</li> <li>-Some relevant stakeholders may not be able to respond within 72hrs</li> <li>-Accessibility and communication may be difficult if not impossible.</li> <li>-Lack of availability of major WASH materials</li> </ul>	<p>FMoWR, FMoH, NEMA, UNICEF, Red Cross, SC(UK), FMoE, WHO, Water Aid,SEMA, SMOWR, SMOH, NEWSAN</p>

	<ul style="list-style-type: none"> <li>- Mapping &amp; provision of restricted defecation areas</li> <li>- Distribution of hygiene kits</li> <li>- Development of solid waste disposal system</li> <li>- Distribution of basic survival NFIs (e.g. Buckets, cups, jerry can...)</li> <li>- Recruitment and training of volunteers/rapid orientation</li> </ul>			
Comprehensive Response:	<ul style="list-style-type: none"> <li>- Refresher training for WASH response team</li> <li>- Repair &amp; Rehabilitation of WASH facilities</li> <li>- Drilling of boreholes</li> <li>- Trucking of water (Trucks from Local Government Councils, Water Boards, and Private Companies). Combined with treatment at storage and point of use levels.</li> <li>- Construction of latrines (Separate toilets for male and female)</li> <li>- Training of volunteers for hygiene education</li> <li>- Hygiene promotion</li> <li>- Distribution of soaps, sanitary pads, diapers, disinfectants, tissue papers and sensitization on hygiene</li> <li>- Development and maintenance of solid waste disposal system</li> <li>- Activity monitoring</li> </ul>	<ul style="list-style-type: none"> <li>- Coordination meeting, Construction of boreholes and latrines. Continuous sensitization on WASH</li> </ul>	<ul style="list-style-type: none"> <li>- Some partners may pull out before the end of 10days</li> <li>- Delay in the supply chain of some critical WASH materials</li> <li>- Due to poor information dissemination, some partners may spend resources on assessment that could have been used for actual response</li> </ul>	<p>FMoWR, FMoH, NEMA, UNICEF, Red Cross, SC(UK), FMoE, WHO, Water Aid,SEMA, SMOWR, SMOH, NEWSAN</p>

1. Table 12: Water Sanitation and Hygiene (WASH)

## **8. Health**

### **8.0 Introduction:**

Health care during emergencies is very essential to reduce morbidity, mortality and disability. Vulnerable groups such as the wounded, sick, children, pregnant women, lactating mothers, PLWHAs, victims of sexual violence and persons traumatized may require medical attention. Therefore, additional support for vaccines and medication will be required.

### **8.1 Sectoral Objective:**

To ensure access to healthcare service delivery to the affected population in emergency situations

### **8.2 Operational Objectives:**

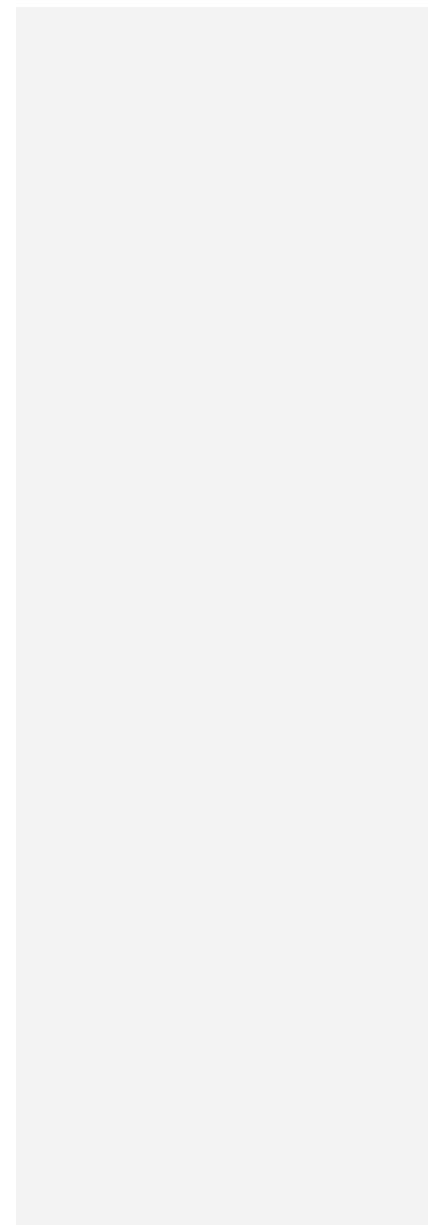
- i. To reduce mortality, morbidity and disability
- ii. To ensure effective, efficient and appropriate health care delivery to vulnerable groups

Sector Name: Health and HIV/AIDS				
Strategies	Requirements	Currently Available/Deployed Activity	Operational Constraint and Gaps	ACTORS
Emergency Preparedness	<ul style="list-style-type: none"> <li>- Establish HIV/AIDS emergency preparedness and response committee</li> <li>- Coordination and Quarterly meetings</li> <li>- Map and create data base of personnel and health facilities that can be mobilized during emergencies.</li> <li>- Simulation exercises</li> <li>- Constitution of Rapid Response Team</li> <li>- Training and re-training of staff on health emergency response including HIV/AIDS and Gender</li> <li>- Sensitization campaigns</li> <li>- Pre-positioning of drugs/medical supplies including first aid box, delivery kit, mosquitoes nets, ARV test kits, condom, PEP kit e.t.c</li> <li>- Revise existing assessment tools to include HIV component</li> <li>- Identification of mortuary and ambulance services</li> <li>- Training of care-givers to provide quality services</li> <li>- Protocol of Drugs section included to preposition testing kits and ARVs</li> </ul>	<ul style="list-style-type: none"> <li>- National stakeholders meeting coordinated by NEMA HQ in collaboration with FMOH</li> <li>- Zonal stakeholders meeting coordinated by NEMA zonal offices in collaboration with SEMA, LEMA and SMOH</li> <li>- Training</li> <li>- Sensitization</li> <li>- NNRIMS are available</li> <li>- Identification of mortuary and ambulance services</li> <li>- Training of care-givers to provide quality services</li> <li>- Protocol of Drugs section included to preposition the testing and ARVs</li> </ul>	<ul style="list-style-type: none"> <li>- Lack of coordinating sub-committee on HIV/AIDS emergency preparedness and response</li> <li>- Inadequate personnel</li> <li>- Training</li> <li>- Inadequate funding</li> <li>- Turf protection affect coordination</li> <li>- Lack of political will and commitment</li> <li>- HEPRP</li> <li>- Training on HCT, ARV, PEP kit and Mama kit</li> <li>- Psycho-social counselling</li> <li>- Infection control in Emergency settings</li> <li>- NNRIMS does not capture HIV response in emergencies</li> </ul>	<p>NACA, SACA, LACA NEMA, SEMA, LEMA, , , FMWA &amp;SD, FMOY, FMOI/FOI Acts, National Refugees Commission, FMOI, UN &amp; Bilateral Partners FMOH, SMOH, PHC Dept, PSO, CSOs, PLHIV, IPs, NRCS/CRCS/IFRCS</p>

Minimum Response	<ul style="list-style-type: none"> <li>- Rapid assessment to determine situation on ground and level of intervention by other stakeholders</li> <li>- Immediate deployment of medical personnel and equipment</li> <li>- Setting up of camp clinics including syndromic management of STI</li> <li>- Documentation/registration</li> <li>- Logistics and supplies such as first aid box ,delivery kit, mosquitoes nets, ARV, mama kits, test kits, condoms(male and female condoms), PEP kit e.t.c</li> <li>- Provide HCT and identify PLWH on treatment and ensure access to ARV</li> <li>- Ensure availability of safe blood supply to meet emergencies</li> <li>- deployment of drugs</li> <li>- Regular meetings of the HIV/AIDS emergency preparedness and response committee</li> </ul>	<ul style="list-style-type: none"> <li>- Rapid assessment to determine situation on ground and level of intervention by other stakeholders</li> <li>- Immediate deployment of medical personnel and supplies</li> <li>- Setting up of camp clinic</li> <li>- Documentation/registration</li> <li>- Integrated Diseases Surveillance and Response (IDSR)</li> <li>- Adherence to International Health regulation IHR</li> </ul>	<ul style="list-style-type: none"> <li>- Inadequate personnel</li> <li>- Training needs</li> <li>- Inadequate funding</li> <li>- Difficulties in identifying people with HIV and other special health conditions,</li> <li>- Health facilities could be depleted</li> <li>- Inadequate supply of first aid box ,delivery kit, mama kits, mosquitoes nets, ARV test kits, condoms(male and female condoms), PEP kit e.t.c</li> <li>- Limited supply of safe blood to meet emergencies</li> <li>- Lack of coordinating sub-committee on HIV/AIDS emergency preparedness and response</li> </ul>	NEMA, FMOH, FMOI, SMOH/ LGA, NACA, SACA, SEMA, LEMA NGOs and partners
Comprehensive Response	-Review meeting with MOH and other stakeholders to determine situation on ground and work out modalities to hand over	<ul style="list-style-type: none"> <li>- Availability of comprehensive sites for HIV/AIDS services delivery in Secondary,</li> </ul>	<ul style="list-style-type: none"> <li>- Lack of adequate preparedness</li> <li>- Availability of sectoral Contingency Plan that</li> </ul>	NEMA, FMOH, FMOI, SMOH/ LGA, NACA, SACA,

	<ul style="list-style-type: none"> <li>- Case management</li> <li>- Identify and designate appropriate health facilities for referral if need be</li> <li>- Rehabilitation</li> <li>- Health education and counselling</li> <li>- Segregation of cases</li> <li>- Winding up</li> <li>- Update database on, HIV/AIDS/STI/TB; other disease prevalence; MSM, IDUs, FSW; OVC, PLWH.</li> <li>-</li> <li>- Use peer educators to ensure continuous counseling education on risk reduction</li> <li>- Reference to National Health Emergency Response Plan-NHERP as a National Master Document to include HIV/AIDS, Safe Blood, Trauma Healing</li> </ul>	<p>and Tertiary institutions at State level</p> <ul style="list-style-type: none"> <li>- Availability of PHCs in Local Government and strong referral services between PHCs, Government, Specialized and Teaching Hospitals</li> <li>- Availability of trained HIV peer educators and volunteers at Local Government level</li> </ul>	<p>captures longer term need of ARV; HCT; SGBV/ RH education; Condoms; PMTCT and other health commodities</p> <ul style="list-style-type: none"> <li>- Lack of capacity for effective delivery of HIV services in emergency settings such as SBCC, HCT, PMTCT, ART, PEP administration and Condom Programing in emergencies</li> <li>- Limited mortuary services</li> </ul>	<p>SEMA,LEMA, NGOs and partners</p>
--	---	---	---	-------------------------------------

Table 13: Health



## **9. Emergency Shelters and Non-Food Items (NFIs)**

### **9.0 Introduction:**

Emergency Shelter and Non-Food Items are instrumental to effective relief operation during emergencies. Provision of emergency shelter and NFIs restores the dignity of the affected population.

### **9.1 Sectoral Objective:**

To mitigate the impact of emergencies on disaster-affected families through provision of NFIs and emergency shelter.

### **9.2 Operational Objectives:**

- a) To identify shelter needs of displaced population;
- b) To identify potential sites for location of emergency shelter camps;
- c) To ensure the pre-positioning of emergency shelter materials, kits and NFIs

Sector Name: EMERGENCY SHELTER AND NON-FOOD ITEMS (NFIs)				
Strategies	Requirements	Currently Available/Deployed Activity	Operational Constraint and Gaps	ACTORS
Emergency Preparedness	<ul style="list-style-type: none"> <li>- MOU with essential service providers</li> <li>- Preposition supplies</li> <li>- Training of trainers (Tot) to develop the capacity of essential responders and stakeholders/communities on erection of emergency shelter;</li> </ul>	<ul style="list-style-type: none"> <li>- Shelter kits: 25%</li> <li>- NFIs: 100%</li> </ul>	<ul style="list-style-type: none"> <li>- Ineffective coordination</li> <li>- Inadequate funding</li> <li>- Weak commitment among actors</li> <li>- 75% shelter kits</li> <li>- Lack of capacity in shelter construction</li> </ul>	<ul style="list-style-type: none"> <li>- NEMA</li> <li>- SEMA</li> <li>- Fed Min of Works</li> <li>- State Ministry of Works</li> <li>- State Ministry of Lands/Survey</li> <li>- Local Planning Authorities</li> <li>- Humanitarian Agencies (Red Cross etc)</li> <li>- NGOs (International, Local)</li> <li>- Community</li> </ul>
Minimum Response	<ul style="list-style-type: none"> <li>- Rapid Assessment</li> <li>- Securing the consent and cooperation of local communities and actors for use of sites;</li> <li>- Deployment of shelter kits and NFIs</li> <li>- Rapid orientation of volunteers and affected persons</li> </ul>	<ul style="list-style-type: none"> <li>- consent and cooperation of local communities and actors for use of sites;</li> <li>- distribution of NFIs and construction of shelters</li> </ul>	<ul style="list-style-type: none"> <li>- Weak capacity in the construction of emergency shelter</li> <li>- Inadequate prepositioning of emergency shelter materials</li> </ul>	<ul style="list-style-type: none"> <li>- NEMA</li> <li>- SEMA</li> <li>- Fed Min of Works</li> <li>- State Ministry of Works</li> <li>- State Ministry of Lands/Survey</li> <li>- Local Planning Authorities</li> <li>- Humanitarian Agencies (Red Cross etc)</li> <li>- NGOs (International, Local)</li> </ul>

Comprehensive Response	<ul style="list-style-type: none"> <li>- Drafting of Withdrawal Plan</li> <li>- Implementation of Resettlement Plan <ul style="list-style-type: none"> <li>• Rehabilitation (in shelter context)</li> <li>• Reconstruction (where moving back to former abode)</li> <li>• Resettlement (Where moving into new sites)</li> </ul> </li> </ul>	<ul style="list-style-type: none"> <li>- Existing Camps- Abuja, Bauchi, River Camp, Returnees ljebu, Ogun State.</li> <li>- Permanent UN IDP Camp</li> <li>- Cross State, Lagos Ikosi, Oru-</li> </ul>	<ul style="list-style-type: none"> <li>- Lack of plan for existing camps</li> <li>- Unwillingness of IDPs to leave camp</li> </ul>	<ul style="list-style-type: none"> <li>- NEMA</li> <li>- SEMA</li> <li>- Fed Min of Works</li> <li>- State Ministry of Works</li> <li>- State Ministry of Lands/Survey</li> <li>- Local Planning Authorities</li> <li>- Humanitarian Agencies (Red Cross etc)</li> <li>- NGOs (International, Local)</li> </ul>
------------------------	---	--	--	---

Table 14: Emergency Shelter and NFIs