

REPORT

OF

ASSESSMENTS AND PERFORMANCE IMPROVEMENT PLANS

FOR

**NURHI SUPPORTED HIGH VOLUME SITES, PHARMACIES
AND PMVS**

IN

ABUJA, KADUNA, ILORIN AND IBADAN

BY

Dr Fatima Mustapha Bunza Fatima - **Systems Strengthening Advisor**
September 2011

Topic.....Page No

List of Tables and Figures

Table	Page
TABLE I: SUMMARY OF FACILITIES ASSESSED BY CITY.....	
TABLEII: HIGH VOLUME SITES ASSESSED IN KADUNA BY LGA.....	
TABLE III: HIGH VOLUME SITES (PUBLIC/PRIVATE) AS PERCENTAGE OF TOTAL NO..... OF HEALTH FACILITIES BY LGA IN KADUNA	
TABLE IV: HIGH VOLUME SITES BY SUPERVISING AUTHORITY BY LGA IN KADUNA.....	
TABLE V: AVAILABILITY OF POST ABORTION CARE SERVICES BY LGA IN KADUNA.....	
FIG I: HIGH VOLUME SITES ASSESSED IN KADUNA BY LGA.....	
FIGURE II: VOLUME OF SERVICES IN HIGH VOLUME SITES BY LGA - KADUNA NORTH LGA...	
FIGURE III: VOLUME OF SERVICES IN HIGH VOLUME SITES BY LGA – KADUNA SOUTH LGA....	
FIGURE IV: VOLUME OF SERVICES IN HIGH VOLUME SITES BY LGA – CHIKUN LGA.....	

Abbreviations.....

Introduction

- 1.1 Assessments and Performance Improvement plans form an integral part of objectives 1 & 2 of NURHI (and to some extent objective 3) which focuses on quality improvement and integration of FP services into maternal Newborn and Child Health (MNCH), services such as Ante natal care, Delivery services, Post natal services, Post abortion care (PAC), Immunization and HIV/AIDS services.
- 1.2 In year 2, NURHI planned to conduct LGA performance improvement Plans, clinical capacity assessments for selected high volume sites (public and private) and non-clinical capacity assessments for pharmacies and patent medicine vendors (PMVs).
- 1.3 assessment tools for the conduct of these assessments were developed by NURHI, collaborating partners consisting of PPFN, Ipas, SFH and FCT public health department)
- 1.3 Assessments (Clinical and non clinical) were conducted in all selected High volume sites(HVS), Pharmacies and PMVs by consultants after orientation on the use of the tools under the leadership of a lead consultant Dr Olusola Odujirin, retired WHO RH Advisor.
- 1.3 Performance improvement Plans (PIP) were planned to be jointly generated by NURHI Quality improvement officers and Collaborating partners (PPFN and Ipas) with key stakeholders. These stakeholders will include but not be limited to State Ministries of Health (SMOH), Local Government Authorities (LGAs) and Health facility management) for each high volume site assessed.
- 1.4 The Performance Improvement Plans generated will inform the overall NURHI activity implementation at such facilities with room for modification during the implementation phase that was to be conducted by the collaborating partners PPFN and Ipas. Thus quality improvement and performance improvement will be site specific.
- 1.5 The sum total of the individual high volume site PIP will be used to summarize NURHI LGA performance improvement plans

The Process

2 GENERATION OF QUALITY STANDARDS FOR FP

- 2.1 Quality standards for Family Planning (FP) services to be used by NURHI were generated at a 2 - day meeting of NURHI, NURHI collaborating partners and government representatives in preparation for the development of facility assessment tools. These quality indicators will be the areas that NURHI project will focus and track during the delivery of FP services.
At the end of the two days, it was unanimously agreed that the National "Performance Standards for family Planning Services for Nigerian Hospitals" (Appendix I) be used as a whole. The Federal Ministry of Health (FMOH) developed the document in 2009 with support from the USAID/MCHIP project.

3. DEVELOPMENT OF ASSESSMENT TOOLS

- 3.1 Assessment tools were developed by the same group of critical stakeholders at another 2 day meeting. Tools were developed for health facility assessment (appendix II), rapid assessment for Pharmacies (Appendix III) and that for PMVs (Appendix (IV)). The tools were tested in Kaduna and Ibadan with the consultants who ultimately administered them.

4. CLINICAL CAPACITY ASSESSMENTS

- 4.1 High volume sites (Public and Private hospitals) were assessed by consultants using the above stated assessment tools in the 4 cities (Abuja, Kaduna, Ilorin and Ibadan). The total number of HVs assessed was 87. Abuja – 14, Ilorin – 20 Kaduna – 26 and Ibadan – 27). These numbers include the original HVS sent for MLE and other HVs selected by virtue of their being discovered to be strategic for programming. Examples of these include Shehu Kangiwa memorial hospital in Kaduna Polytechnic, which was discovered to be a potential Youth friendly centre as it is located in a tertiary institution.

5. NON - CLINICAL CAPACITY ASSESSMENTS

Pharmacies and PMVs were randomly selected from the list of Pharmacies and PMVs available as highlighted in the technical brief developed for the purpose . A general decision was made to select 20 PMVs in each city distributed evenly across LGAs. Similarly, 15 pharmacies were also selected in the same manner. The total of 35 facilities per city were assessed by the city based M&E officers and Program assistants.

6. PERFORMANCE IMPROVEMENT PLANS

Following the completion of all the assessments, the original strategy for generating performance improvement plans for individual facilities by PPFN and Ipas had to be modified to pave way for progress.

- 6.1 A technical brief for the PIP (Appendix V) was generated by the Systems Strengthening advisor and circulated to all advisors and NURHI management for input. The final strategy was facility based PIP meetings in all NURHI supported HV sites.
- 6.2 The conduct of PIPs started in February 2011 in Kaduna. This was followed by Abuja, Ilorin and Finally Ibadan, which were delayed due to the city's changing selected HVS. The PIPs were concluded in June 2011 (a period of 6 months).
- 6.3 Summaries of the individual PIPs were written out by a consultant in the month of August, reviewed by the Systems Strengthening advisor in August and September.
- 6.4 Completed reviewed summaries were shared with the State Team Leaders for their review with their teams with a view to highlighting any discrepancies noted as they prepared for an internal review meeting for the preparation of the final PIP report, dissemination to State Ministries of Health and Local Governments. This was done at the Year 3 work-planning meeting (September 18 -23, 2011)
- 6.5 Final review was conducted at a three-day meeting of the service delivery team and state teams involving all technical advisors, Service delivery officers (M&E and QI/SS) and state teams (State Team leaders, State FP coordinators, State M&E

officers and State HMIS officers). Each state team reviewed the PIP reports by HF and filled out summary tables developed for the purpose (appendix VI) using questions generated for the exercise (appendix VII).

3. FACILITY ASSESSMENT FINDINGS

TABLE I: SUMMARY OF FACILITIES ASSESSED BY CITY

	ABUJA	KADUNA	ILORIN	IBADAN	TOTAL
PUBLIC HOSPITALS	10 + (2)*	22	14	22	70
PRIVATE HOSPITALS	1**	2(2)**	5 (1)***	5	16
<u>TOTAL</u>	<u>14</u>	<u>26</u>	<u>20</u>	<u>27</u>	<u>87</u>
PMVS	20	20	20	20	80
PHARMACIES	15	15	15	15	60

* - 2 Public Hospitals in Abuja added as controls for the purpose of assessments but Pip was not done in them

** - 1 Private hospital in Abuja and 2 Private hospitals in kaduna added for the purpose as assessment as control. No PIP was done in them.

*** - Additional HV site realized to have one of the highest volume private Hospital and added at the end (Surulere Hospital)

KADUNA

HIGH VOLUME SITES ASSESSED

TABLE II: HIGH VOLUME SITES ASSESSED IN KADUNA BY LGA

S/NO	LGA	PUBLIC HFS	PRIVATE HFS	TOTAL NUMBER OF HF
1	KADUNA NORTH	8	2	10
2	KADUNA SOUTH	9	3	12
3	CHIKUN	4	0	4
	TOTAL	21	5	26

FIG I: HIGH VOLUME SITES ASSESSED IN KADUNA BY LGA

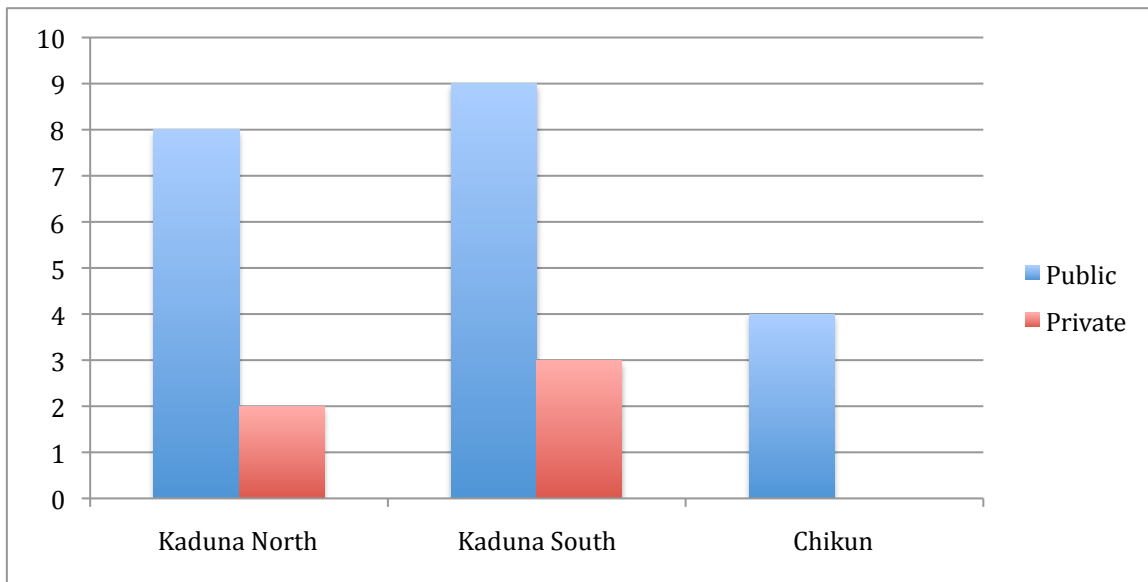


TABLE III: HIGH VOLUME SITES (PUBLIC/PRIVATE) AS PERCENTAGE OF TOTAL NO OF HEALTH FACILITIES BY LGA IN KADUNA

S/NO	LGA	PUBLIC HVS	TOTAL PUBLIC HFS	PRIVATE HVS	TOTAL PRIVATE HFS	TOTAL HFS
1	KADUNA NORTH	8	19	2	52	71
2	KADUNA SOUTH	9	18	3	36	54
3	CHIKUN	4	31	0	51	82
TOTAL		21	68	5	139	207

TABLE IV: HIGH VOLUME SITES BY SUPERVISING AUTHORITY BY LGA IN KADUNA

S/NO	LGA	FG	SMOH	LGA	PRIVATE	Others	TOTAL
1	KADUNA NORTH	0	3	4	2	1 (Military)	10
2	KADUNA SOUTH	0	3	5	3	1(Polytechnic)	12
3	CHIKUN	0	1	3	0	0	4
	TOTAL	0	7	12	5	2	26

FIGURE II: VOLUME OF SERVICES IN HIGH VOLUME SITES BY LGA - KADUNA NORTH LGA

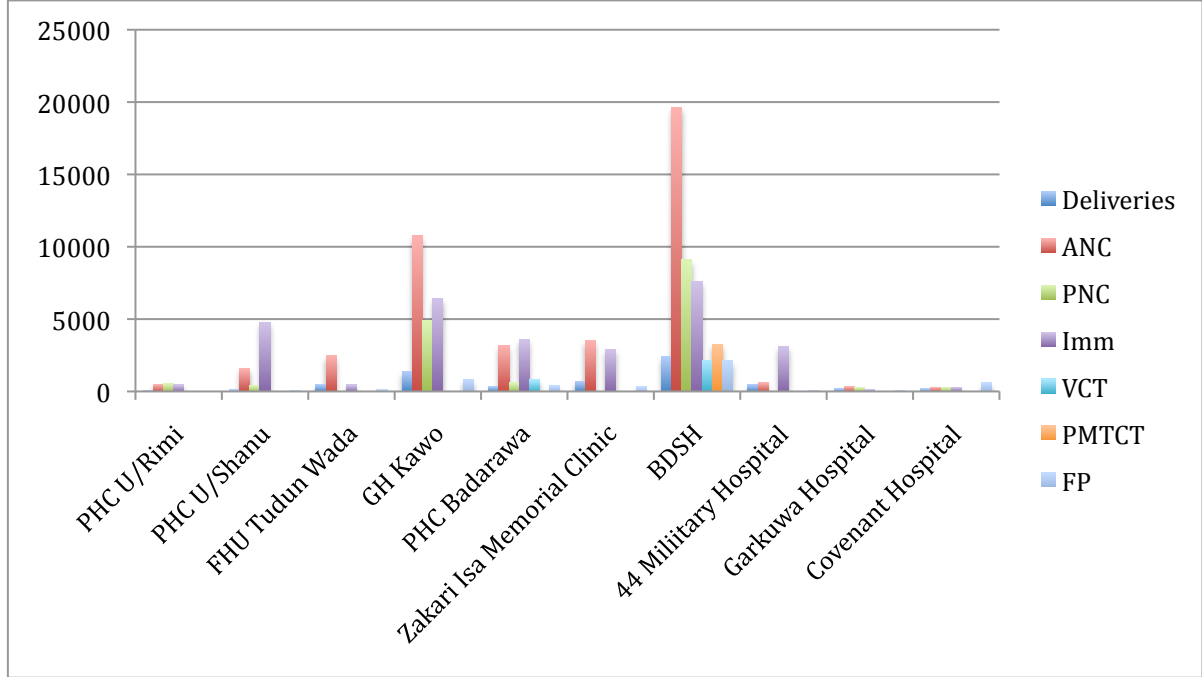


FIGURE III: VOLUME OF SERVICES IN HIGH VOLUME SITES BY LGA - KADUNA SOUTH LGA

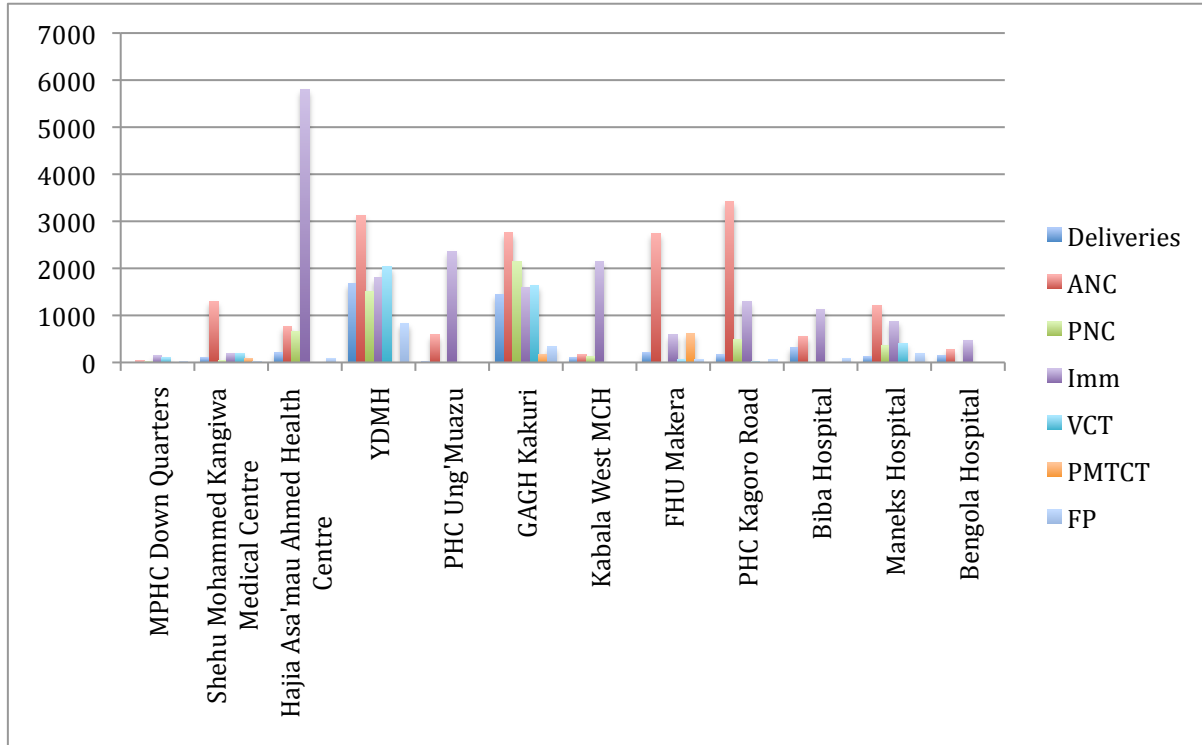


FIGURE IV: VOLUME OF SERVICES IN HIGH VOLUME SITES BY LGA – CHIKUN LGA

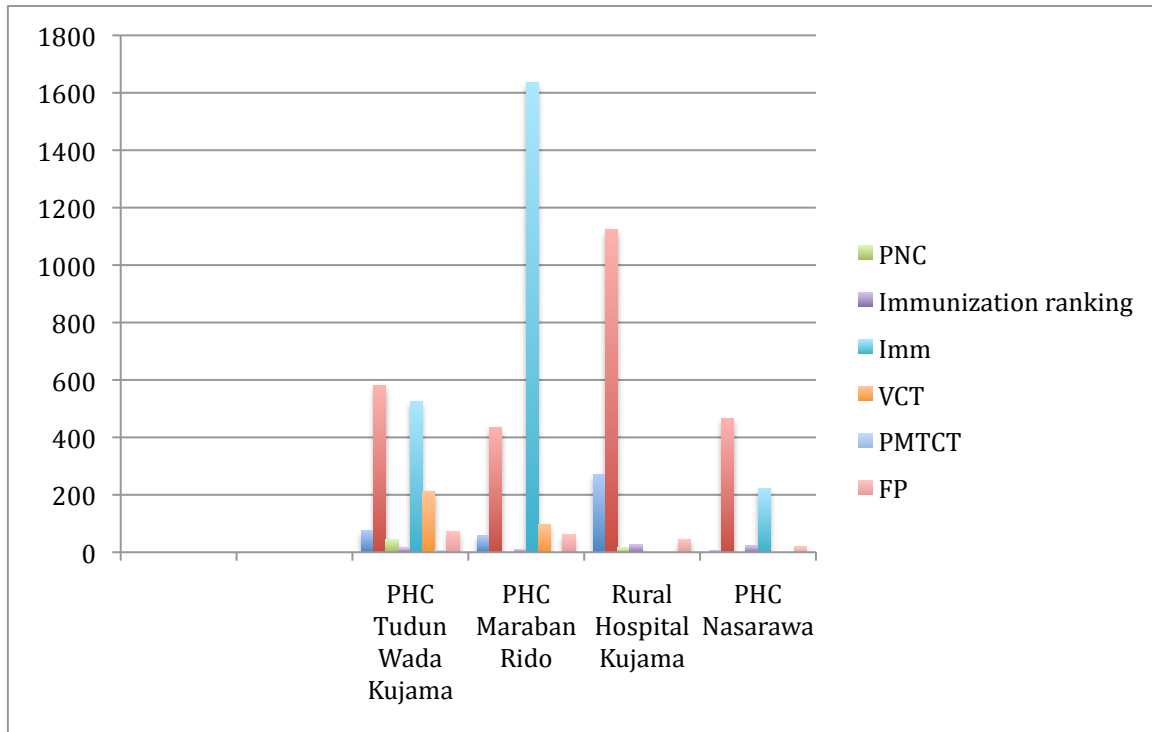


TABLE V: AVAILABILITY OF POST ABORTION CARE SERVICES BY LGA IN KADUNA

LGA	PUBLIC HOSPITALS	PRIVATE HOSPITALS	TOTAL
KADUNA NORTH	4	2	6
KADUNA SOUTH	4	3	7
CHIKUN	1	0	1
TOTAL	9	5	14

PERFORMANCE IMPROVEMENT PLANS (PIP) FOR INDIVIDUAL HIGH VOLUME SITES IN KADUNA

LIST OF HIGH VOLUME SITES ASSESSED AND PIP CONDUCTED

A. KADUNA NORTH LOCAL GOVERNMENT

1. BARAU DIKKO SPECIALIST HOSPITAL
2. FAMILY HEALTH UNIT TUDUN WADA
3. GENERAL HOSPITAL KAWO
4. PHC UNGWAN RIMI
5. PHC UNGWAN SHANU
6. ZAKARI ISA MEMORIAL CLINIC
7. 44 ARMY REFERENCE HOSPITAL, KURMIN MASHI
8. COVENANT HOSPITAL BENIN STREET

B. KADUNA SOUTH LOCAL GOVERNMENT

9. GWAMNA AWAN GENERAL HOSPITAL KAKURI
10. FAMILY HEALTH UNIT MAKERA
11. HAJIYA ASMA'U AHMED MAKARFI HEALTH CENTRE BARNAWA
12. MODEL PHC DOWN QUARTERS MAKERA
13. PHC UNGWAN MU'AZU
14. PHC BADARAWA
15. SHEHU MOHAMMED KANGIWA MEDICAL CENTRE
16. YUSUF DANTSOHO MEMORIAL HOSPITAL
17. BIBA SPECIALIST HOSPITAL
18. MANEKS HOSPITAL KAKURI

C. CHIKUN LOCAL GOVERNMENT

19. RURAL HOSPITAL KUJAMA
20. PHC TUDUN WADA KUJAMA
21. PHC MARARABAN RIDO
22. PHC NASARAWA

K.1 Performance Improvement Plan – Barau Dikko Specialist Teaching Hospital, Kaduna North, Kaduna

State: Kaduna	City: Kaduna	LGA: Kaduna North	Ward:
Phone No of Interviewee: 08023551479	GPS Reading: Latitude: Longitude:		
Facility Type: Tertiary	Managing Authority: Government	Year opened: 1985	Hours: 24hours

**GPS Reading N/A*

1. Situation Analysis

1.1 *Number of Trained FP Providers: 3*

1.2 *NHMIS Registers: Nil*

1.3 *FP Clinic Description:*

- 1) FP clinic located among other clinics in a row with very narrow corridor that serves as the waiting area.
- 2) 3 FP –providers
- 3) Providers are in need of FP training to update skills
- 4) Limited equipment for performance of range of family planning options

1.4 *Patient Volume Statistics (June-Nov 2010):*

Deliveries: 2,395	PAC (Y): 5	ANC: 19,620	IMM: 7,607	HIV/PMTCT: - 6/3,265	FP: 2, 108
-----------------------------	-------------------	--------------------	-------------------	--------------------------------	-------------------

1.5 *Integration Plans:*

SERVICE DELIVERY POINT	TYPE OF INTEGRATION	Remarks
ANC	<ol style="list-style-type: none"> 1. IEC 2. Group Counseling 3. One –on –one Counseling (with PMTCT counseling) 4. Conclusion/decision on informed choice of FP method 	
Delivery	Post partum IUD insertions, Exulton campaign. Minilaparotomy for BTL	
Post Natal Visit	IEC, Group counseling through health talk, FP service desk extension.	
Immunization	IEC, Group counseling through health talk, FP service desk extension.	
Post Abortion Care	PAC/FP services	Linked to SFH
HIV /AIDS (VCT/ART/PMTCT)	FP IEC, Group counseling, One- on – One counseling (as part of PMTCT, ART, VCT)	Linked to ICAP
General Outpatient Clinic	Extension of FP desk, group counseling, provision of IEC materials and clearly marked directions to FP clinic	High volume of clients here

1.6 *Contraceptive Availability:*

	Provided	Currently Available	Stockout 30 days	Stockout one year	Brands	Cost (N)	Patient Volume*
Combined OCPs	Yes	Yes	No	No	Lo-femenal Microgynon	15	60
Progestin only pills	Yes	Yes	Yes	Yes	Microlut	15	29
Emergency contraceptive	Yes	Yes	No	No	Postinor 2		-
Male condoms	Yes	Yes	No	No	Latex	1	15
Female condoms	Yes	Yes	Yes	Yes	F2	20	6
Injectables (2/3 mth)	Yes	Yes	Yes	Yes	Noristerat Depo	60	1,107
Implants	Yes	Yes	Yes	Yes	Jadelle Implanon	2000	67
IUDs	Yes	Yes	No	No	-	100	1,098
Female sterilization	Yes	Yes	N/A	N/A	N/A		15
Male sterilization	Yes	Yes	N/A	N/A	N/A	-	-

* (May-Oct 2010)

1.7 *Most popular method:* Injectables

1.8 *Missing IEC Materials:* IEC materials absent

1.9 *Outreach:* No

a) *Number (name) of communities:* -

b) *Frequency:* -

c) *FP included:* -

d) *Link with CBDs:* -Nil

1.10 *Service protocols and guidelines available:* Yes, FMOH

1.11 *Periodic audits of medical records/service registers:* Yes

1.12 *QA Committee:* Yes

1.13 *Minimum Required Infrastructure, Equipment and Supplies for IUD Insertion:*

Item	Available	Item	Available
Private exam room	Yes	Sterilizer / autoclave	Yes
IUD Insertion Kit	Yes	Pedal bin	Yes
Angle poised lamp	Yes	Weighing scale	Yes
Bed screen (4 folding)	Yes	Sphygmomanometer and stethoscope	Yes
Stepping stool	Yes	Cheadle forceps and container	Yes
Mackintosh	Yes	Drums for swabs	Yes
Pillow	Yes	Running water supply (sink/bucket-tap/metal bowl-tripod)	yes
Apron	Yes	Toilet facilities/latrine	Yes
Kick about	Yes	Window curtains/blinds	Yes
Instrument trolley	No	Sterile gloves and masks	Yes
Instrument tray	Yes	Antiseptic	Yes

1.14 *Minimum Required Infrastructure, Equipment and Supplies for Other Methods*:*

Item	Available	Item	Available
Waiting area	Yes	Private exam room**	Yes
Waiting benches/seats	Yes	Storage area for drugs/supplies	Yes
IEC materials available in waiting area		Electricity	Yes
- posters	Yes	Back-up generator / inverter	Yes
- handbills and display	Yes	Sharps container	Yes
Private counseling room/space	Yes	Sterile disposal latex gloves	Yes
IEC materials available in counseling area	Yes	Disposable syringes and needles	Yes
Counseling room table and chairs (min 3)	Yes	Single room with 4 tables for counseling (no confidentiality)	Yes

*Counseling, condoms, OCPs, injectables, implants

**Same as IUD insertion space. Can be same as counseling room where there is a single provider with low patient load, such as private hospitals.

1.14 *Minimum Required Infrastructure, Equipment and Supplies for Minilaparotomy and Vasectomy:*

Item	Available	Item	Available
Small operation table	Yes	instrument trolley	Yes
Operation lamp	Yes	Oxygen apparatus	Yes
Mini-laparotomy kits	No	Aprons, gowns, masks & theatre boots	Yes
Sphygmomanometer and stethoscope	Yes	Sterile disposal latex gloves	Yes

2. Commitments /Plans for Performance Improvement

Health Facility

Shown interest in partnership with NURHI

Government

Not available

NURHI

1. Training of service providers
2. Provision of IEC materials
3. Provision of FP service registers
4. Joint demand generation/community mobilization activities around the facility
5. Facilitating 2 way referrals with other facilities; General hospitals, PMVs, CBD agents etc.
6. Membership of the FPPN network
7. Possible equipment support

3. Opportunities

1. Good opportunity for basic integration model of all key components
2. Good facility location
3. Increased Capacity Building opportunity for FP provision
4. Demand creation activities
5. Opportunity for electronic data capture

4. Challenges

1. Data sources and general information management system require reorganization
2. Strategy for effective demand creation
3. Irregular power supply, but generator available

FAMILY PLANNING SERVICE UPGRADE REQUIREMENT

A. INFRASTRUCTURE

Nil

B. EQUIPMENT

Basic Equipment

1. 2 Medium sized medicine cupboard
2. 2 Drug trolleys
3. 1 each of Drums for swab (small, medium and large)
4. 2 Cheadle forceps & containers
5. 1 Sterilizer
6. 1 Autoclave
7. 1 Instrument trolley
8. 2 Instrument trays
9. 2 Pedal bins
10. 1 Weighing scale
11. 2 IUD insertion couch
12. 2 Angle poised lamps
13. 1 Bed screen
14. 1 Stepping stool
15. Mackintosh
16. 2 Pillows
17. 3 Sphygmomanometer
18. 3 Stethoscope
19. Patient chairs for counseling area
20. 4 IUCD insertion kits containing the following:

A. Insertion

- (4) Cup/bowl/gallipot/ Kidney dish
- (2) Forceps, Schroeder-Braun uterine tenaculum, 9.75 inches (24.8 cm)

- (2) Forceps, sponge, Foerster, straight, 9.5 inches (24.1 cm)
- (2) Sound, uterine, Sims, 13 inches (33 cm)
- (2) Scissors, operating, Mayo, curved, 6.75 inches (17.1 cm)
- (4) Speculum, vaginal, Graves, Cousco, Sims

B. Removal

- (2) Forceps, sponge, Foerster, straight, 9.5 inches (24.1 cm)
- (2) Speculum, vaginal, Graves,
(1.38 inches [3.5 cm] x 4 inches [10.2 cm])
- (2) Forceps, Bozeman uterine dressing, straight, 10.5 inches (26.7 cm)
- (1) IUD removal forceps, alligator jaw, 8 inches*
- (1) IUD string retriever*
- (1) Alligator IUD removal forceps

For Hormonal Implant

Insertion (Jadelle®, Sino-Implant II®)

- (1) Cup/bowl/gallipot
- (1) Forceps, sponge-holding, straight, 5.5 inches (14 cm)
- (1) Forceps, mosquito, delicate, curved, 5 inches (12.7 cm)
- (1) Scalpel, handle, #3, graduated in cm (1) Trocar (#10)

Insertion (Implanon®)

- (1) Cup/bowl/gallipot
- (1) Forceps sponge-holding, straight, 5.5 inches (14 cm)

Removal (Implanon®, Jadelle®, Sino-Implant II®)

- (1) Cup/bowl/gallipot
- (1) Forceps sponge-holding, straight, 5.5 inches (14 cm)
- (1) Scalpel, handle, #3, graduated in cm
- (1) Forceps, mosquito, straight, 5 inches (12.7 cm)
- (1) Forceps, mosquito, curved, 5 inches (12.7 cm)

C. PERSONNEL

1. Full FP training for new FP providers
2. Refresher training on FP
3. Training on Implants for Doctors and midwives

D. DATA MANGEMENT

1. M&E training for service providers
2. Provision of FP service registers
3. Provision of CLMS forms
4. Monthly service statistics data collection
5. Quarterly data quality assessments (DQA)

E. QUALITY OF SERVICE

1. Provision of FP service protocols
2. Provision of FP Performance standards
3. Provision of IEC materials
4. Provision of job aids
5. Conduct On the Job trainings
6. Conduct supportive supervision
7. Link to distance learning
8. Link to FPPN
9. Develop a referral network

K.2

Performance Improvement Plan – Family Health Unit Tudun Wada, Kaduna

State: Kaduna	City: Kaduna	LGA: Kaduna North	Ward:
Phone No of Interviewee: 08067187235	GPS Reading: Latitude: Longitude:		
Facility Type: Basic Health Center	Managing Authority: Government	Year opened: 1970s	Hours: Mon – Friday, 6hours dly

*GPS Reading N/A

1. Situation Analysis

1.1 *Number of Trained FP Providers:* 1

1.2 *NHMIS Registers:* None

1.3 *FP Clinic Description:*

5) One room for waiting area, counseling and IUD insertion. (No privacy)

6) Limited equipment for performance of range of family planning options

7) The only skilled FP provider at the facility needs update trainings

1.4 *Patient Volume Statistics (June-Nov 2010):*

Deliveries: 500	PAC (Y): 4	ANC: 2,474	IMM: 459	HIV/PMTCT: -	FP: 148
------------------------	-------------------	-------------------	-----------------	---------------------	----------------

1.5 *Integration Plans:*

SERVICE DELIVERY POINT	TYPE OF INTEGRATION	Remarks
ANC	5. IEC 6. Group Counseling 7. One –on –one Counseling (with PMTCT counseling) 8. Conclusion/decision on informed choice of FP method	
Delivery	Post partum IUD insertions, Exulton campaign.	
Post Natal Visit	IEC, Group counseling through health talk, FP service desk extension.	
Immunization	IEC, Group counseling through health talk, FP service desk extension.	
Post Abortion Care	PAC/FP services	
HIV /AIDS (VCT/ART/PMTCT)	-	

1.6 *Contraceptive Availability:*

	Provide d	Currentl y Availabl e	Stockou t 30 days	Stockou t one year	Brands	Cost (N)	Patient Volume*

Combined OCPs	Yes	Yes	No	No	Duofem Lofemenal	15	43
Progestin only pills	Yes	Yes	No	No	Microlut	-	41
Emergency contraceptive	Yes	Yes	No	No	Postinor 2	120	-
Male condoms	Yes	Yes	No	No		NA	-
Female condoms	Yes	Yes	No	No		-	-
Injectables (2/3 mth)	Yes	Yes	No	no	Noristerat Depo	100	210
Implants	Yes	Yes	No	No	Jadelle	-	-
IUDs	Yes	Yes	No	-	Copper T	500	24
Female sterilization	No	N/A	N/A	N/A	N/A	N/A	N/A
Male sterilization	No	N/A	N/A	N/A	N/A	N/A	N/A

* (Jan-Jun 2010)

1.7 *Most popular method:* Injectables

1.8 *Missing IEC Materials:* Many IEC materials seen

1.9 *Outreach:* Nil

a) *Number (name) of communities:* 0

b) *Frequency:* - 0

c) *FP included:* - 0

d) *Link with CBDs:* - 0

1.10 *Service protocols and guidelines available:* Yes, FMOH

1.11 *Periodic audits of medical records/service registers:* Yes

1.12 *QA Committee:* Yes

1.13 *Minimum Required Infrastructure, Equipment and Supplies for IUD Insertion:*

Item	Available	Item	Available
Private exam room	No	Sterilizer / autoclave	No
IUD Insertion Kit	No	Pedal bin	Yes
Angle poised lamp	No	Weighing scale	Yes
Bed screen (4 folding)	No	Sphygmomanometer and stethoscope	Yes
Stepping stool	Yes	Chitel forceps and container	Yes
Mackintosh	Yes	Drums for swabs	Yes
Pillow	Yes	Running water supply (sink/bucket-tap/metal bowl-tripod)	Yes
Apron	Yes	Toilet facilities/latrine	Yes
Kick about	Yes	Window curtains/blinds	Yes
Instrument trolley	Yes	Sterile gloves and masks	Yes
Instrument tray	Yes	Antiseptic	Yes

1.14 *Minimum Required Infrastructure, Equipment and Supplies for Other Methods*:*

Item	Available	Item	Available
Waiting area	Yes	Private exam room**	No
Waiting benches/seats	Yes	Storage area for drugs/supplies	Yes
IEC materials available in waiting area		Electricity	Yes

- posters	Yes	Back-up generator / inverter	Yes
- handbills and display	Yes	Sharps container	Yes
Private counseling room/space	Yes	Sterile disposal latex gloves	Yes
IEC materials available in counseling area	Yes	Disposable syringes and needles	Yes
Counseling room table and chairs (min 3)	No		

*Counseling, condoms, OCPs, injectables, implants

**Same as IUD insertion space. Can be same as counseling room where there is a single provider with low patient load, such as private hospitals.

1.14 Minimum Required Infrastructure, Equipment and Supplies for Minilaparotomy and Vasectomy:

Item	Available	Item	Available
Small operation table	Yes	instrument trolley	Yes
Operation lamp	Yes	Oxygen apparatus	Yes
Mini-laparotomy kits	No	Aprons, gowns, masks & theatre boots	Yes
Sphygmomanometer and stethoscope	Yes	Sterile disposal latex gloves	Yes

2. Commitments /Plans for Performance Improvement

Health Facility

1. Pledged to work towards provision of FP clinic space

Government

Nil presently

NURHI

1. Training of service providers
2. Provision of IEC materials
3. Provision of FP service registers
4. Joint demand generation/community mobilization activities around the facility
5. Facilitating 2 way referrals with other facilities, PMVs, CBD agents etc.
6. Membership of the FPPN network
7. Possible equipment support

3. Opportunities

1. Good opportunity for basic integration in key components
2. Located in a highly populated area

4. Challenges

1. Shortage of space for an FP clinic

2. Client over load
3. Shortage of skilled providers

FAMILY PLANNING SERVICE UPGRADE REQUIREMENT

A. INFRASTRUCTURE

1. Curtains for windows and doors for FP clinic

B. EQUIPMENT

Basic Equipment

1. 1 Medium medicine cupboard
2. 1 Drug trolleys
3. 1 each of Drums for swab (small, medium and large)
4. 2 Cheadle forceps & containers
5. 1 Sterilizer
6. 1 Autoclave
7. 1 Instrument trolley
8. 2 Instrument trays
9. 2 Pedal bins
10. 1 Weighing scale
11. 1 IUD insertion couch
12. 1 Angle poised lamps
13. 1 Bed screen
14. 1 Stepping stool
15. Mackintosh
16. 2 Pillows
17. 1 Sphygmomanometer
18. 1 Stethoscope
19. Patient Chairs for the waiting area
20. Patient chairs for counseling area
21. **2 IUCD insertion kits containing the following:**
 - A. Insertion**
 - (4) Cup/bowl/gallipot/ Kidney dish
 - (2) Forceps, Schroeder-Braun uterine tenaculum, 9.75 inches (24.8 cm)
 - (2) Forceps, sponge, Foerster, straight, 9.5 inches (24.1 cm)
 - (2) Sound, uterine, Sims, 13 inches (33 cm)
 - (2) Scissors, operating, Mayo, curved, 6.75 inches (17.1 cm)
 - (4) Speculum, vaginal, Graves, Cousco, Sims
 - B. Removal**
 - (2) Forceps, sponge, Foerster, straight, 9.5 inches (24.1 cm)
 - (2) Speculum, vaginal, Graves,
(1.38 inches [3.5 cm] x 4 inches [10.2 cm])
 - (2) Forceps, Bozeman uterine dressing, straight, 10.5 inches (26.7 cm)
 - (1) IUD removal forceps, alligator jaw, 8 inches*
 - (1) IUD string retriever*

- (1) Alligator IUD removal forceps

For Hormonal Implant

Insertion (Jadelle®, Sino-Implant II®)

- (1) Cup/bowl/gallipot
- (1) Forceps, sponge-holding, straight, 5.5 inches (14 cm)
- (1) Forceps, mosquito, delicate, curved, 5 inches (12.7 cm)
- (1) Scalpel, handle, #3, graduated in cm (1) Trocar (#10)

Insertion (Implanon®)

- (1) Cup/bowl/gallipot
- (1) Forceps sponge-holding, straight, 5.5 inches (14 cm)

Removal (Implanon®, Jadelle®, Sino-Implant II®)

- (1) Cup/bowl/gallipot
- (1) Forceps sponge-holding, straight, 5.5 inches (14 cm)
- (1) Scalpel, handle, #3, graduated in cm
- (1) Forceps, mosquito, straight, 5 inches (12.7 cm)
- (1) Forceps, mosquito, curved, 5 inches (12.7 cm)

C. PERSONNEL

1. Full FP training for new FP providers
2. Refresher training on FP
3. Training of CHEWS as preceptors on FP
4. Streamlined CLMS training
5. Training on Implants for Doctors and midwives

D. DATA MANGEMENT

1. M&E training for service providers
2. Provision of FP service registers
3. Provision of CLMS forms
4. Monthly service statistics data collection
5. Quarterly data quality assessments (DQA)

E. QUALITY OF SERVICE

1. Provision of FP service protocols
2. Provision of FP Performance standards
3. Provision of IEC materials
4. Provision of job aids
5. Conduct On the Job trainings
6. Conduct supportive supervision
7. Link to distance learning
8. Link to FPPN
9. Develop a referral network

K.3 Performance Improvement Plan – General Hospital Kawo, Kaduna

State: Kaduna	City: Kaduna	LGA: Kaduna North	Ward:
Phone No of Interviewee: 08036255834	GPS Reading: Latitude:		Longitude:
Facility Type: General Hospital	Managing Authority: Government	Year opened: PHC before 2008 conversion to Gen. Hospital	Hours: Mon – Sun, 24hours

*GPS Reading N/A

1. Situation Analysis

1.1 *Number of Trained FP Providers:* 3

1.2 *NHMIS Registers:* None

1.3 *FP Clinic Description:*

- 8) The FP unit is presently housed in the maternity section, and needs relocation and improvement
- 9) There is high attrition of skilled personnel from the center
- 10) ANC shade provided by ICAP
- 11) MVA room not available, it is provided in the labour ward
- 12) Stock out syndrome is common because of high volume of clients
- 13) There is significantly high turnover of clients in the GOPD too

1.4 *Patient Volume Statistics (May-Oct 2010):*

Deliveries: 1,376	PAC (Y): Y, 49	ANC: 10,807	IMM: 6, 448	HIV/PMTCT: -	FP: 840
-----------------------------	-----------------------	--------------------	--------------------	---------------------	----------------

1.5 *Integration Plans:*

SERVICE DELIVERY POINT	TYPE OF INTEGRATION	Remarks
ANC	9. IEC 10. Group Counseling 11. One –on –one Counseling (with PMTCT counseling) 12. Conclusion/decision on informed choice of FP method	
Delivery	Post partum IUD insertions, Exulton campaign.	
Post Natal Visit	IEC, Group counseling through health talk, FP service desk extension.	
Immunization	IEC, Group counseling through health talk, FP service desk extension.	
Post Abortion Care	PAC/FP services	
HIV /AIDS (VCT/ART/PMTCT)	FP IEC, Group counseling, One- on – One counseling (as part of PMTCT, ART, VCT)	ICAP PMTCT Linkage

1.6 *Contraceptive Availability:*

	Provided	Currently Available	Stockout 30 days	Stockout one year	Brands	Cost (N)	Patient Volume*
Combined OCPs	Yes	Yes	Yes	Yes	Duofem Lofemenal	30	211
Progestin only pills	Yes	Yes	Yes	Yes	Microlut	30	-
Emergency contraceptive	No	No	Yes	Yes	Postinor	120	-
Male condoms	No	No	N/A	N/A	N/A	N/A	N/A
Female condoms	No	No	N/A	N/A	N/A	N/A	N/A
Injectables (2/3 mth)	Yes	Yes	Yes	Yes	Noristerat Depoprovera	100	1,762
Implants	No	No	N/A	N/A	N/A	N/A	N/A
IUDs	Yes	Yes	No	No	Copper T	500	30
Female sterilization	No	N/A	N/A	N/A	N/A	N/A	N/A
Male sterilization	No	N/A	N/A	N/A	N/A	N/A	N/A

* (Jan-Jun 2010)

1.7 *Most popular method:* Injectables

1.8 *Missing IEC Materials:* Significant dearth of IEC materials evident

1.9 *Outreach:* Nil

a) *Number (name) of communities:*

b) *Frequency:* -

c) *FP included:* -

d) *Link with CBDs:* -

1.10 *Service protocols and guidelines available:* Yes, facility-developed guidelines

1.11 *Periodic audits of medical records/service registers:* Yes

1.12 *QA Committee:* Yes

1.13 *Minimum Required Infrastructure, Equipment and Supplies for IUD Insertion:*

Item	Available	Item	Available
Private exam room	Yes	Sterilizer / autoclave	No
IUD Insertion Kit	No	Pedal bin	Yes
Angle poised lamp	Yes	Weighing scale	Yes
Bed screen (4 folding)	Yes	Sphygmomanometer and stethoscope	Yes
Stepping stool	Yes	Chitel forceps and container	Yes
Mackintosh	Yes	Drums for swabs	Yes
Pillow	Yes	Running water supply (sink/bucket-tap/metal bowl-tripod)	Yes (borehole)
Apron	Yes	Toilet facilities/latrine	Yes
Kick about	Yes	Window curtains/blinds	Yes
Instrument trolley	Yes	Sterile gloves and masks	Yes

Instrument tray	Yes	Antiseptic	Yes
-----------------	-----	------------	-----

1.14 Minimum Required Infrastructure, Equipment and Supplies for Other Methods*:

Item	Available	Item	Available
Waiting area	Yes	Private exam room**	Yes,
Waiting benches/seats	Yes	Storage area for drugs/supplies	Yes
IEC materials available in waiting area		Electricity	Yes
- posters	Yes	Back-up generator / inverter	Yes
- handbills and display	Yes	Sharps container	Yes
Private counseling room/space	Yes	Sterile disposal latex gloves	Yes
IEC materials available in counseling area	Yes	Disposable syringes and needles	Yes
Counseling room table and chairs (min 3)	Yes	Single room with 4 tables for counseling (no confidentiality)	Yes

*Counseling, condoms, OCPs, injectables, implants

**Same as IUD insertion space. Can be same as counseling room where there is a single provider with low patient load, such as private hospitals.

1.14 Minimum Required Infrastructure, Equipment and Supplies for Minilaparotomy and Vasectomy:

Item	Available	Item	Available
Small operation table	Yes	instrument trolley	Yes
Operation lamp	Yes	Oxygen apparatus	Yes
Mini-laparotomy kits	Yes	Aprons, gowns, masks & theatre boots	Yes
Sphygmomanometer and stethoscope	Yes	Sterile disposal latex gloves	Yes

2. Commitments /Plans for Performance Improvement

Health Facility

1. Pledged to work towards provision of FP clinic space

Government

Nil presently

NURHI

1. Training of service providers
2. Provision of IEC materials
3. Provision of FP service registers
4. Joint demand generation/community mobilization activities around the facility
5. Facilitating 2 way referrals with other facilities, PMVs, CBD agents etc.
6. Membership of the FPPN network
7. Possible equipment support

3. Opportunities

1. Good opportunity for integration model of all key components
2. High client volume window for FP uptake
3. Good number of skilled providers present
4. Window for introduction of Electronic data capture for FP

4. Challenges

1. Shortage of space for an FP clinic
2. Client over load

FAMILY PLANNING SERVICE UPGRADE REQUIREMENT

A. INFRASTRUCTURE

1. Curtains for windows and doors for FP clinic

B. EQUIPMENT

Basic Equipment

1. 2 Medium medicine cupboard
2. 2 Drug trolley
3. 1 each of Drums for swab (small, medium and large)
4. 2 Chittel forceps & containers
5. 1 Sterilizers
6. 1 Auto clave
7. 1 Instrument trolley
8. 2 Instrument trays
9. 2 Pedal bins
10. 1 Weighing scale
11. 2 IUD insertion couches
12. 2 Angle poised lamps
13. 1 Bed screen
14. 1 Stepping stool
15. Mackintosh
16. 2 Pillows
17. 1 Sphygmomanometer
18. 1 Stethoscope
19. Patient Chairs for the waiting area
20. Patient chairs for counseling area
21. **4 IUCD insertion kits containing the following:**
 - A. Insertion**
 - (4) Cup/bowl/gallipot/ Kidney dish
 - (2) Forceps, Schroeder-Braun uterine tenaculum, 9.75 inches (24.8 cm)
 - (2) Forceps, sponge, Foerster, straight, 9.5 inches (24.1 cm)
 - (2) Sound, uterine, Sims, 13 inches (33 cm)

- (2) Scissors, operating, Mayo, curved, 6.75 inches (17.1 cm)
- (4) Speculum, vaginal, Graves, Cousco, Sims

B. Removal

- (2) Forceps, sponge, Foerster, straight, 9.5 inches (24.1 cm)
- (2) Speculum, vaginal, Graves,
(1.38 inches [3.5 cm] x 4 inches [10.2 cm])
- (2) Forceps, Bozeman uterine dressing, straight, 10.5 inches (26.7 cm)
- (1) IUD removal forceps, alligator jaw, 8 inches*
- (1) IUD string retriever*
- (1) Alligator IUD removal forceps

For Hormonal Implant

Insertion (Jadelle®, Sino-Implant II®)

- (1) Cup/bowl/gallipot
- (1) Forceps, sponge-holding, straight, 5.5 inches (14 cm)
- (1) Forceps, mosquito, delicate, curved, 5 inches (12.7 cm)
- (1) Scalpel, handle, #3, graduated in cm (1) Trocar (#10)

Insertion (Implanon®)

- (1) Cup/bowl/gallipot
- (1) Forceps sponge-holding, straight, 5.5 inches (14 cm)

Removal (Implanon®, Jadelle®, Sino-Implant II®)

- (1) Cup/bowl/gallipot
- (1) Forceps sponge-holding, straight, 5.5 inches (14 cm)
- (1) Scalpel, handle, #3, graduated in cm
- (1) Forceps, mosquito, straight, 5 inches (12.7 cm)
- (1) Forceps, mosquito, curved, 5 inches (12.7 cm)

C. PERSONNEL

1. Full FP training for new FP providers
2. Refresher training on FP
3. Training of CHEWS as preceptors on FP
4. Streamlined CLMS training
5. Training on Implants for Doctors and midwives

D. DATA MANGEMENT

6. M&E training for service providers
7. Provision of FP service registers
8. Provision of CLMS forms
9. Monthly service statistics data collection
10. Quarterly data quality assessments (DQA)

E. QUALITY OF SERVICE

10. Provision of FP service protocols
11. Provision of FP Performance standards
12. Provision of IEC materials
13. Provision of job aids
14. Conduct On the Job trainings
15. Conduct supportive supervision
16. Link to distance learning
17. Link to FPPN
18. Develop a referral network

K.4 Performance Improvement Plan – PHC Ungwan Rimi, Kaduna North, Kaduna

State: Kaduna	City: Kaduna	LGA: Kaduna North	Ward: Gabasawa
Phone No of Interviewee: 08034830752	GPS Reading: Latitude: Longitude:		
Facility Type: PHC	Managing Authority: Government	Year opened: -	Hours: 24 hours

*GPS Reading N/A

1. Situation Analysis

1.1 *Number of Trained FP Providers:* 5

1.2 *NHMIS Registers:* None

1.3 *FP Clinic Description:*

14)PHC Located in a high population density area of Kadauna North near a market

15)The FP services provided. Injectables most popular

16)Dearth of providers

1.4 *Patient Volume Statistics (June-Nov 2010):*

Deliveries: 39	PAC (Y/N): N	ANC: 508	IMM: 474	HIV/PMTCT: - N	FP: 23
-----------------------	---------------------	-----------------	-----------------	--------------------------	---------------

1.5 *Integration Plans:*

SERVICE DELIVERY POINT	TYPE OF INTEGRATION	Remarks
ANC	13. IEC 14. Group Counseling 15. One –on –one Counseling 16. Conclusion/decision on informed choice of FP method	
Delivery	Post partum IUD insertions, Exulton campaign.	
Post Natal Visit	IEC, Group counseling through health talk	
Immunization	IEC, Group counseling through health talk	
Post Abortion Care	Nil	
HIV /AIDS (VCT/ART/PMTCT)	Nil	

1.6 *Contraceptive Availability:*

	Provide d	Currentl y Availabl e	Stockou t 30 days	Stockou t one year	Brands	Cost (N)	Patient Volume*
Combined OCPs	Yes	Yes	No	No	Duofem	50	-
Progestin only pills	Yes	Yes	Yes	Yes	Microlut	50	NA

Emergency contraceptive	Yes	Yes	NO	Yes	Postinor		54
Male condoms	No	N/A	N/A	N/A	N/A	N/A	-
Female condoms	No	N/A	N/A	N/A	N/A	N/A	-
Injectables (2/3 mth)	Yes	Yes	Yes	Yes	Depoprovera, Noristerat	150	320
Implants	No	N/A	N/A	Yes	N/A	N/A	N/A
IUDs	Yes	Yes	Yes	Yes	Copper T	350	NA
Female sterilization	No						-
Male sterilization	No						-

* (Jan-Jun 2010)

1.7 *Most popular method:* Nil

1.8 *Missing IEC Materials:* Most IEC materials not evident

1.9 *Outreach:* No

a) *Number (name) of communities:*

b) *Frequency:* -

c) *FP included:* -

d) *Link with CBDs:* -

1.10 *Service protocols and guidelines available:* No

1.11 *Periodic audits of medical records/service registers:* Yes

1.12 *QA Committee:* Yes

1.13 *Minimum Required Infrastructure, Equipment and Supplies for IUD Insertion:*

Item	Available	Item	Available
Private exam room	No	Sterilizer / autoclave	No
IUD Insertion Kit	No	Pedal bin	Yes
Angle poised lamp	No	Weighing scale	Yes
Bed screen (4 folding)	No	Sphygmomanometer and stethoscope	Yes
Stepping stool	Yes	Cheadle forceps and container	Yes
Mackintosh	Yes	Drums for swabs	Yes
Pillow	Yes	Running water supply (sink/bucket-tap/metal bowl-tripod)	No (Well)
Apron	Yes	Toilet facilities/latrine	Yes
Kick about	Yes	Window curtains/blinds	Yes
Instrument trolley	No	Sterile gloves and masks	Yes
Instrument tray	Yes	Antiseptic	Yes

1.14 *Minimum Required Infrastructure, Equipment and Supplies for Other Methods*:*

Item	Available	Item	Available
Waiting area	Yes	Private exam room**	No
Waiting benches/seats	Yes	Storage area for drugs/supplies	Yes
IEC materials available in waiting area		Electricity	Yes
- posters	Yes	Back-up generator / inverter	Yes
- handbills and display	Yes	Sharps container	Yes
Private counseling room/space	Yes	Sterile disposal latex gloves	Yes
IEC materials available in	Yes	Disposable syringes and needles	Yes

counseling area			
Counseling room table and chairs (min 3)	No		

*Counseling, condoms, OCPs, injectables, implants

**Same as IUD insertion space. Can be same as counseling room where there is a single provider with low patient load, such as private hospitals.

1.14 Minimum Required Infrastructure, Equipment and Supplies for Minilaparotomy and Vasectomy:

Item	Available	Item	Available
Small operation table	No	instrument trolley	Yes
Operation lamp	No	Oxygen apparatus	Yes
Mini-laparotomy kits	No	Aprons, gowns, masks & theatre boots	Yes
Sphygmomanometer and stethoscope	Yes	Sterile disposal latex gloves	Yes

2. Commitments /Plans for Performance Improvement

Health Facility

Interest in partnership with NURHI

Government

Nil presently

NURHI

8. Review for IUCD uptake
9. Training of service providers
10. Provision of IEC materials
11. Provision of FP service registers
12. Joint demand generation/community mobilization activities around the facility
13. Facilitating 2 way referrals with other facilities, PMVs, CBD agents etc.
14. Membership of the FPPN network
15. Possible equipment support

3. Opportunities

4. Challenges

4. Low volume for MCH services

FAMILY PLANNING SERVICE UPGRADE REQUIREMENT

A. INFRASTRUCTURE

2. Nil of Note

B. EQUIPMENT

Basic Equipment

1. 1 Medium medicine cupboard
2. 1 Drug trolleys
3. 1 each of Drums for swab (small, medium and large)
4. 2 Cheadle forceps & containers
5. 1 Sterilizer
6. 1 Autoclave
7. 1 Instrument trolley
8. 2 Instrument trays
9. 2 Pedal bins
10. 1 Weighing scale
11. 1 IUD insertion couch
12. 1 Angle poised lamps
13. 1 Bed screen
14. 1 Stepping stool
15. Mackintosh
16. 2 Pillows
17. 1 Sphygmomanometer
18. 1 Stethoscope
19. **2 IUCD insertion kits containing the following:**
 - A. Insertion**
 - (4) Cup/bowl/gallipot/ Kidney dish
 - (2) Forceps, Schroeder-Braun uterine tenaculum, 9.75 inches (24.8 cm)
 - (2) Forceps, sponge, Foerster, straight, 9.5 inches (24.1 cm)
 - (2) Sound, uterine, Sims, 13 inches (33 cm)
 - (2) Scissors, operating, Mayo, curved, 6.75 inches (17.1 cm)
 - (4) Speculum, vaginal, Graves, Cousco, Sims
 - B. Removal**
 - (2) Forceps, sponge, Foerster, straight, 9.5 inches (24.1 cm)
 - (2) Speculum, vaginal, Graves,
(1.38 inches [3.5 cm] x 4 inches [10.2 cm])
 - (2) Forceps, Bozeman uterine dressing, straight, 10.5 inches (26.7 cm)
 - (1) IUD removal forceps, alligator jaw, 8 inches*
 - (1) IUD string retriever*
 - (1) Alligator IUD removal forceps

For Hormonal Implant

Insertion (Jadelle®, Sino-Implant II®)

- (1) Cup/bowl/gallipot
- (1) Forceps, sponge-holding, straight, 5.5 inches (14 cm)
- (1) Forceps, mosquito, delicate, curved, 5 inches (12.7 cm)
- (1) Scalpel, handle, #3, graduated in cm (1) Trocar (#10)

Insertion (Implanon®)

- (1) Cup/bowl/gallipot
- (1) Forceps sponge-holding, straight, 5.5 inches (14 cm)

Removal (Implanon®, Jadelle®, Sino-Implant II®)

- (1) Cup/bowl/gallipot
- (1) Forceps sponge-holding, straight, 5.5 inches (14 cm)
- (1) Scalpel, handle, #3, graduated in cm
- (1) Forceps, mosquito, straight, 5 inches (12.7 cm)
- (1) Forceps, mosquito, curved, 5 inches (12.7 cm)

C. PERSONNEL

- 6. Full FP training for new FP providers
- 7. Refresher training on FP
- 8. Training of CHEWS as preceptors on FP
- 9. Streamlined CLMS training
- 10. Training on Implants for Doctors and midwives

D. DATA MANGEMENT

- 11. M&E training for service providers
- 12. Provision of FP service registers
- 13. Provision of CLMS forms
- 14. Monthly service statistics data collection
- 15. Quarterly data quality assessments (DQA)

E. QUALITY OF SERVICE

- 19. Provision of FP service protocols
- 20. Provision of FP Performance standards
- 21. Provision of IEC materials
- 22. Provision of job aids
- 23. Conduct On the Job trainings
- 24. Conduct supportive supervision
- 25. Link to distance learning
- 26. Link to FPPN
- 27. Develop a referral network

K.5 Performance Improvement Plan – PHC Ungwan Shannu, Kaduna North, Kaduna

State: Kaduna	City: Kaduna	LGA: Kaduna North	Ward: Ungwan Shannu
Phone No of Interviewee: 08036151815	GPS Reading: Latitude:		Longitude:
Facility Type: PHC	Managing Authority: Government	Year opened: -	Hours: 24hours

*GPS Reading N/A

1. Situation Analysis

1.1 *Number of Trained FP Providers:* 2

1.2 *NHMIS Registers:* None

1.3 *FP Clinic Description:*

17) Only two trained FP providers,

18) Insertions take place in the labour room

19) No good source of water supply for the facility

20) No light source nor standby power generator

21) Limited equipment for performance of range of family planning options

1.4 *Patient Volume Statistics (May-Oct 2010):*

Deliveries: 102	PAC (Y/N): N	ANC: 1608	IMM: 4,775	HIV/PMTCT: -	FP: 68
------------------------	---------------------	------------------	-------------------	---------------------	---------------

1.5 *Integration Plans:*

SERVICE DELIVERY POINT	TYPE OF INTEGRATION	Remarks
ANC	17. IEC 18. Group Counseling 19. One –on –one Counseling (with PMTCT counseling) 20. Conclusion/decision on informed choice of FP method	
Delivery	Post partum IUD insertions, Exulton campaign.	
Post Natal Visit	IEC, Group counseling through health talk	
Immunization	IEC, Group counseling through health talk	
Post Abortion Care	Nil	
HIV /AIDS (VCT/ART/PMTCT)	Nil	

1.6 *Contraceptive Availability:*

	Provide	Currentl y Availabl e	Stockou t 30 days	Stockou t one year	Brands	Cost (N)	Patient Volume*
Combined OCPs	Yes	Yes	no	No	Duofem	20	5
Progestin only pills	Yes	Yes	No	Yes	Microlut	-	-
Emergency contraceptive	No					-	-
Male condoms	Yes	Yes	No	No	latex	-	-
Female condoms						-	-
Injectables (2/3 mth)	Yes	Yes	No	No	Noristerat Depoprovera	60	127
Implants	No	N/A	N/A	N/A	N/A	N/A	N/A
IUDs	Yes	Yes	-	-	Copper T	-	-
Female sterilization	No	N/A	N/A	N/A	N/A	N/A	N/A
Male sterilization	No	N/A	N/A	N/A	N/A	N/A	N/A

* (Jan-Jun 2010)

1.7 *Most popular method:* Injectables

1.8 *Missing IEC Materials:* Most IEC materials lacking

1.9 *Outreach:* No

a) *Number (name) of communities:* -

b) *Frequency:* -

c) *FP included:* -

d) *Link with CBDs:* -Nil

1.10 *Service protocols and guidelines available:* Yes, FMOH

1.11 *Periodic audits of medical records/service registers:* Yes

1.12 *QA Committee:* Yes

1.13 *Minimum Required Infrastructure, Equipment and Supplies for IUD Insertion:*

Item	Available	Item	Available
Private exam room	No	Sterilizer / autoclave	No
IUD Insertion Kit	No	Pedal bin	Yes
Angle poised lamp	No	Weighing scale	No
Bed screen (4 folding)	No	Sphygmomanometer and stethoscope	Yes
Stepping stool	Yes	Cheadle forceps and container	No
Mackintosh	Yes	Drums for swabs	Yes
Pillow	Yes	Running water supply (sink/bucket-tap/metal bowl-tripod)	No
Apron	Yes	Toilet facilities/latrine	Yes
Kick about	Yes	Window curtains/blinds	Yes
Instrument trolley	Yes	Sterile gloves and masks	Yes
Instrument tray	Yes	Antiseptic	Yes

1.14 *Minimum Required Infrastructure, Equipment and Supplies for Other Methods*:*

Item	Available	Item	Available
Waiting area	Yes	Private exam room**	No

Waiting benches/seats	Yes	Storage area for drugs/supplies	Yes
IEC materials available in waiting area		Electricity	Yes
- posters	Yes	Back-up generator / inverter	Yes
- handbills and display	Yes	Sharps container	Yes
Private counseling room/space	Yes	Sterile disposal latex gloves	Yes
IEC materials available in counseling area	Yes	Disposable syringes and needles	Yes
Counseling room table and chairs (min 3)	No	Single room with 4 tables for counseling (no confidentiality)	Yes

*Counseling, condoms, OCPs, injectables, implants

**Same as IUD insertion space. Can be same as counseling room where there is a single provider with low patient load, such as private hospitals.

1.14 Minimum Required Infrastructure, Equipment and Supplies for Minilaparotomy and Vasectomy:

Item	Available	Item	Available
Small operation table	No	instrument trolley	Yes
Operation lamp	Yes	Oxygen apparatus	Yes
Mini-laparotomy kits	No	Aprons, gowns, masks & theatre boots	Yes
Sphygmomanometer and stethoscope	Yes	Sterile disposal latex gloves	Yes

2. Commitments /Plans for Performance Improvement

Health Facility

Government

Nil presently

NURHI

16. Training of service providers
17. Provision of IEC materials
18. Provision of FP service registers
19. Joint demand generation/community mobilization activities around the facility
20. Facilitating 2 way referrals with other facilities, PMVs, CBD agents etc.
21. Membership of the FPPN network
22. Possible equipment support

3. Opportunities

1. Establishing outreach programs around the facility

4. Challenges

- F. Record keeping and data management

FAMILY PLANNING SERVICE UPGRADE REQUIREMENT

A. INFRASTRUCTURE

Nil

B. EQUIPMENT

Basic Equipment

1. 1 Medium medicine cupboard
2. 1 Drug trolley
3. 1 each of Drums for swab (small, medium and large)
4. 2 Cheadle forceps & containers
5. 1 Sterilizer
6. 1 Autoclave
7. 1 Instrument trolley
8. 2 Instrument trays
9. 2 Pedal bins
- 10.1 Weighing scale
- 11.1 IUD insertion couch
- 12.1 Angle poised lamps
- 13.1 Bed screen
- 14.1 Stepping stool
15. Mackintosh
- 16.2 Pillows
- 17.1 Sphygmomanometer
- 18.1 Stethoscope
- 19.2 IUCD insertion kits containing the following:
 - A. **Insertion**
 - (4) Cup/bowl/gallipot/ Kidney dish
 - (2) Forceps, Schroeder-Braun uterine tenaculum, 9.75 inches (24.8 cm)
 - (2) Forceps, sponge, Foerster, straight, 9.5 inches (24.1 cm)
 - (2) Sound, uterine, Sims, 13 inches (33 cm)
 - (2) Scissors, operating, Mayo, curved, 6.75 inches (17.1 cm)
 - (4) Speculum, vaginal, Graves, Cousco, Sims
 - B. **Removal**
 - (2) Forceps, sponge, Foerster, straight, 9.5 inches (24.1 cm)
 - (2) Speculum, vaginal, Graves,
(1.38 inches [3.5 cm] x 4 inches [10.2 cm])

- (2) Forceps, Bozeman uterine dressing, straight, 10.5 inches (26.7 cm)
- (1) IUD removal forceps, alligator jaw, 8 inches*
- (1) IUD string retriever*
- (1) Alligator IUD removal forceps

C. PERSONNEL

- 11. Full FP training for new FP providers
- 12. Refresher training on FP
- 13. Training of CHEWS as preceptors on FP
- 14. Streamlined CLMS training

D. DATA MANGEMENT

- 16. M&E training for service providers
- 17. Provision of FP service registers
- 18. Provision of CLMS forms
- 19. Monthly service statistics data collection
- 20. Quarterly data quality assessments (DQA)

E. QUALITY OF SERVICE

- 28. Provision of FP service protocols
- 29. Provision of FP Performance standards
- 30. Provision of IEC materials
- 31. Provision of job aids
- 32. Conduct On the Job trainings
- 33. Conduct supportive supervision
- 34. Link to distance learning
- 35. Link to FPPN
- 36. Develop a referral network

K.6 Performance Improvement Plan – Zakari Isa Memorial Clinic Kaduna

State: Kaduna	City: Kaduna	LGA: Kaduna North	Ward: Dadinriba
Phone No of Interviewee: 08028534155	GPS Reading: Latitude: Longitude:		
Facility Type: Basic Health Center	Managing Authority: Government	Year opened: 1960	Hours: 24

*GPS Reading N/A

1. Situation Analysis

1.1 *Number of Trained FP Providers:* 2

1.2 *NHMIS Registers:* None

1.3 *FP Clinic Description:*

22) No room for FP services despite the number of clients. A store room is used for FP service provision

23) PPFN Linkage

24) Provides only oral pills and Injectables

25) Average of 40-50 clients daily

26) Facility built in the 1960s and requires renovation

1.4 *Patient Volume Statistics (Jan-Jun 2010):*

Deliveries: 719	PAC (Y): 128	ANC: 3,518	IMM: 3,892	HIV/PMTCT: -	FP: 320
------------------------	---------------------	-------------------	-------------------	---------------------	----------------

1.5 *Integration Plans:*

SERVICE DELIVERY POINT	TYPE OF INTEGRATION	Remarks
ANC	21. IEC 22. Group Counseling 23. One –on –one Counseling (with PMTCT counseling) 24. Conclusion/decision on informed choice of FP method	
Delivery	Post partum IUD insertions, Exulton campaign.	
Post Natal Visit	IEC, Group counseling through health talk, FP service desk extension.	
Immunization	IEC, Group counseling through health talk, FP service desk extension.	
Post Abortion Care	PAC/FP	
HIV /AIDS (VCT/ART/PMTCT)	Nil	

1.6 *Contraceptive Availability:*

	Provide d	Currentl y Availabl e	Stockou t 30 days	Stockou t one year	Brands	Cost (N)	Patient Volume*
Combined OCPs	Yes	Yes	No	-	Duofem	60	5
Progestin only pills	NO	No	Yes	-	N/A	N/A	N/A

Emergency contraceptive	No	No	Yes	-	N/A	N/A	N/A
Male condoms	No	No	Yes	-	N/A	N/A	N/A
Female condoms	No	No	-	-	N/A	N/A	N/A
Injectables (2/3 mth)	Yes	Yes	No	-	Noristerat Depo	100	170
Implants	No	No	Yes	Yes	N/A	N/A	N/A
IUDs	No	No	No	No	N/A	N/A	N/A
Female sterilization	No	N/A	N/A	N/A	N/A	N/A	N/A
Male sterilization	No	N/A	N/A	N/A	N/A	N/A	N/A

* (Nov 2010)

1.7 *Most popular method:* Injectables

1.8 *Missing IEC Materials:* absence IEC materials seen

1.9 *Outreach:* Nil

a) *Number (name) of communities:* Yes, 4 communities delineated by streets; Dadon Riba, Katsina road, Lagos street, and Kigo road

b) *Frequency:* - once a week

c) *FP included:* - Yes

d) *Link with CBDs:* -No

1.10 *Service protocols and guidelines available:* No

1.11 *Periodic audits of medical records/service registers:* Yes

1.12 *QA Committee:* Yes

1.13 *Minimum Required Infrastructure, Equipment and Supplies for IUD Insertion:*

Item	Available	Item	Available
Private exam room	No	Sterilizer / autoclave	No
IUD Insertion Kit	Yes	Pedal bin	No
Angle poised lamp	Yes	Weighing scale	Yes
Bed screen (4 folding)	No	Sphygmomanometer and stethoscope	Yes
Stepping stool	Yes	Chitel forceps and container	Yes
Mackintosh	Yes	Drums for swabs	Yes
Pillow	Yes	Running water supply (sink/bucket-tap/metal bowl-tripod)	No (Well)
Apron	Yes	Toilet facilities/latrine	Yes
Kick about	No	Window curtains/blinds	Yes
Instrument trolley	No	Sterile gloves and masks	Yes
Instrument tray	Yes	Antiseptic	Yes

1.14 *Minimum Required Infrastructure, Equipment and Supplies for Other Methods*:*

Item	Available	Item	Available
Waiting area	Yes	Private exam room**	No
Waiting benches/seats	Yes	Storage area for drugs/supplies	No
IEC materials available in waiting area		Electricity	Yes
- posters	No	Back-up generator / inverter	No
- handbills and display	No	Sharps container	No
Private counseling room/space	No	Sterile disposal latex gloves	Yes

IEC materials available in counseling area	Yes	Disposable syringes and needles	Yes
Counseling room table and chairs (min 3)	Yes		

*Counseling, condoms, OCPs, injectables, implants

**Same as IUD insertion space. Can be same as counseling room where there is a single provider with low patient load, such as private hospitals.

1.14 Minimum Required Infrastructure, Equipment and Supplies for Minilaparotomy and Vasectomy:

Item	Available	Item	Available
Small operation table	No	instrument trolley	No
Operation lamp	No	Oxygen apparatus	No
Mini-laparotomy kits	No	Aprons, gowns, masks & theatre boots	Yes
Sphygmomanometer and stethoscope	Yes	Sterile disposal latex gloves	Yes

2. Commitments /Plans for Performance Improvement

Health Facility

Has an uncompleted building from which part could be used as FP clinic when completed

Government

Need to complete the building (by LGA authorities)

NURHI

23. Training of service providers
24. Provision of IEC materials
25. Provision of FP service registers
26. Joint demand generation/community mobilization activities around the facility
27. Facilitating 2 way referrals with other facilities, PMVs, CBD agents etc.
28. Membership of the FPPN network
29. Possible equipment support

3. Opportunities

5. Centrally located and close to the market
6. An old facility
7. Opportunity for expanding spectrum of FP services to include long term methods such as IUD and Implants

4. Challenges

- No CLMS forms available
- Poor record system

- Facility has had experienced boycott in 2005 by the community when Rotary International supported them with commodities and setting up their sign board.

FAMILY PLANNING SERVICE UPGRADE REQUIREMENT

A. INFRASTRUCTURE

1. Curtains for windows and doors for FP clinic
2. 8 Client chairs for waiting area

F. EQUIPMENT

Basic Equipment

1. 1 Medium medicine cupboard
2. 1 Drug trolley
3. 1 each of Drums for swab (small, medium and large)
4. 2 Chittel forceps & containers
5. 1 Sterilizers
6. 1 Auto clave
7. 1 Instrument trolley
8. 2 Instrument trays
9. 2 Pedal bins
10. 1 Weighing scale
11. 1 IUD insertion couch
12. 2 Angle poised lamps
13. 1 Bed screen
14. 1 Stepping stool
15. Mackintosh
16. 2 Pillows
17. 1 Sphygmomanometer
18. 1 Stethoscope

19. 2 IUCD insertion kits containing the following:

A. Insertion

- (4) Cup/bowl/gallipot/ Kidney dish
- (2) Forceps, Schroeder-Braun uterine tenaculum, 9.75 inches (24.8 cm)
- (2) Forceps, sponge, Foerster, straight, 9.5 inches (24.1 cm)
- (2) Sound, uterine, Sims, 13 inches (33 cm)
- (2) Scissors, operating, Mayo, curved, 6.75 inches (17.1 cm)
- (4) Speculum, vaginal, Graves, Cousco, Sims

B. Removal

- (2) Forceps, sponge, Foerster, straight, 9.5 inches (24.1 cm)
- (2) Speculum, vaginal, Graves,
(1.38 inches [3.5 cm] x 4 inches [10.2 cm])
- (2) Forceps, Bozeman uterine dressing, straight, 10.5 inches (26.7 cm)

- (1) IUD removal forceps, alligator jaw, 8 inches*
- (1) IUD string retriever*
- (1) Alligator IUD removal forceps

B. PERSONNEL

- 15. Full FP training for new FP providers
- 16. Refresher training on FP
- 17. Training of CHEWS as preceptors on FP
- 18. Streamlined CLMS training
- 19. Training on Implants for Doctors and midwives

C. DATA MANGEMENT

- 21. M&E training for service providers
- 22. Provision of FP service registers
- 23. Provision of CLMS forms
- 24. Monthly service statistics data collection
- 25. Quarterly data quality assessments (DQA)

D. QUALITY OF SERVICE

- 37. Provision of FP service protocols
- 38. Provision of FP Performance standards
- 39. Provision of IEC materials
- 40. Provision of job aids
- 41. Conduct On the Job trainings
- 42. Conduct supportive supervision
- 43. Link to distance learning
- 44. Link to FPPN
- 45. Develop a referral network

K.7 Performance Improvement Plan – 44 Army Reference Hospital, Kurminmashi, Kaduna North, Kaduna

State: Kaduna	City: Kaduna	LGA: Kaduna North	Ward:
Phone No of Interviewee: 08033438417	GPS Reading: Latitude: Longitude:		
Facility Type: Tertiary	Managing Authority: Government /Army	Year opened: 1944	Hours: 24hours

*GPS Reading N/A

1. Situation Analysis

1.1 *Number of Trained FP Providers:* 3

1.2 *NHMIS Registers:* Nil

1.3 *FP Clinic Description:*

27)Clinic has a waiting area, a counseling area and a private examination room

28)Clinic offers all types of FP services

29)Providers are in need of FP training to update skills

1.4 *Patient Volume Statistics (June-Nov 2010):*

Deliveries: 502	PAC (Y/N): Y	ANC: 631	IMM: 3,107	HIV/PMTCT: Y	FP: 56
------------------------	---------------------	-----------------	-------------------	---------------------	---------------

1.5 *Integration Plans:*

SERVICE DELIVERY POINT	TYPE OF INTEGRATION	Remarks
ANC	25. IEC 26. Group Counseling 27. One –on –one Counseling (with PMTCT counseling) 28. Conclusion/decision on informed choice of FP method	
Delivery	Post partum IUD insertions, Exulton campaign.	
Post Natal Visit	IEC, Group counseling through health talk	
Immunization	IEC, Group counseling through health talk, FP service desk extension.	
Post Abortion Care	PAC/FP services	
HIV /AIDS (VCT/ART/PMTCT)	FP IEC, Group counseling, One- on – One counseling (as part of PMTCT, ART, VCT)	

1.6 *Contraceptive Availability:*

	Provide d	Currentl y Availabl e	Stockou t 30 days	Stockou t one year	Brands	Cost (N)	Patient Volume*
Combined OCPs	Yes	Yes	No	Yes	Duofem	200	4
Progestin only pills	Yes	Yes	Yes	Yes			
Emergency	Yes	Yes	No	No	Postinor	free	

contraceptive							
Male condoms	Yes	Yes	Yes	Yes		-	
Female condoms	Yes	Yes	Yes	Yes		-	1
Injectables (2/3 mth)	Yes	Yes	No	Yes	Noristerat Depo	400 300	82
Implants	Yes	Yes	No	Yes	Jadelle Implanon	7000	
IUDs	Yes	Yes	No	Yes	-	1000	1
Female sterilization	Yes	Yes	N/A	N/A	N/A		5
Male sterilization	No	N/A	N/A	N/A	N/A	N/A	N/A

* (May-Oct 2010)

1.7 *Most popular method:* Injectables

1.8 *Missing IEC Materials:* IEC materials absent

1.9 *Outreach:* No

a) *Number (name) of communities:* -

b) *Frequency:* -

c) *FP included:* -

d) *Link with CBDs:* -Nil

1.10 *Service protocols and guidelines available:* Nil

1.11 *Periodic audits of medical records/service registers:* no

1.12 *QA Committee:* No

1.13 *Minimum Required Infrastructure, Equipment and Supplies for IUD Insertion:*

Item	Available	Item	Available
Private exam room	Yes	Sterilizer / autoclave	Yes
IUD Insertion Kit	Yes	Pedal bin	Yes
Angle poised lamp	Yes	Weighing scale	Yes
Bed screen (4 folding)	Yes	Sphygmomanometer and stethoscope	Yes
Stepping stool	Yes	Cheadle forceps and container	Yes
Mackintosh	Yes	Drums for swabs	Yes
Pillow	Yes	Running water supply (sink/bucket-tap/metal bowl-tripod)	Yes
Apron	Yes	Toilet facilities/latrine	Yes
Kick about	Yes	Window curtains/blinds	Yes
Instrument trolley	No	Sterile gloves and masks	Yes
Instrument tray	Yes	Antiseptic	Yes

1.14 *Minimum Required Infrastructure, Equipment and Supplies for Other Methods*:*

Item	Available	Item	Available
Waiting area	Yes	Private exam room**	No
Waiting benches/seats	Yes	Storage area for drugs/supplies	Yes
IEC materials available in waiting area		Electricity	Yes
- posters	Yes	Back-up generator / inverter	Yes
- handbills and display	Yes	Sharps container	Yes

Private counseling room/space	Yes	Sterile disposal latex gloves	Yes
IEC materials available in counseling area	Yes	Disposable syringes and needles	Yes
Counseling room table and chairs (min 3)	Yes		

*Counseling, condoms, OCPs, injectables, implants

**Same as IUD insertion space. Can be same as counseling room where there is a single provider with low patient load, such as private hospitals.

1.14 *Minimum Required Infrastructure, Equipment and Supplies for Minilaparotomy and Vasectomy:*

Item	Available	Item	Available
Small operation table	Yes	instrument trolley	Yes
Operation lamp	Yes	Oxygen apparatus	Yes
Mini-laparotomy kits	No	Aprons, gowns, masks & theatre boots	Yes
Sphygmomanometer and stethoscope	Yes	Sterile disposal latex gloves	Yes

2. Commitments /Plans for Performance Improvement

Health Facility

Shown interest in partnership with NURHI

Government| Army

Not available

NURHI

30. Training of service providers
31. Provision of IEC materials
32. Provision of FP service registers
33. Joint demand generation/community mobilization activities in the barracks
34. Facilitating 2 way referrals with other facilities; General hospitals, PMVs, CBD agents etc.
35. Membership of the FPPN network
36. Possible equipment support

3. Opportunities

3. Good opportunity raising awareness and mobilization among the military officers in different barracks

4. Challenges

- E. Services a little restricted to the military officers

FAMILY PLANNING SERVICE UPGRADE REQUIREMENT

A. INFRASTRUCTURE

Nil

B. EQUIPMENT

Basic Equipment

1. 1 Medium medicine cupboard
2. 1 Drug trolleys
3. 1 each of Drums for swab (small, medium and large)
4. 2 Cheatle forceps & containers
5. 1 Sterilizer
6. 1 Autoclave
7. 1 Instrument trolley
8. 2 Instrument trays
9. 2 Pedal bins
10. 1 Weighing scale
11. 2 IUD insertion couch
12. 2 Angle poised lamps
13. 1 Bed screen
14. 1 Stepping stool
15. Mackintosh
16. 2 Pillows
17. 1 Sphygmomanometer
18. 1 Stethoscope
19. 2 IUCD insertion kits containing the following:

A. Insertion

- (4) Cup/bowl/gallipot/ Kidney dish
- (2) Forceps, Schroeder-Braun uterine tenaculum, 9.75 inches (24.8 cm)
- (2) Forceps, sponge, Foerster, straight, 9.5 inches (24.1 cm)
- (2) Sound, uterine, Sims, 13 inches (33 cm)
- (2) Scissors, operating, Mayo, curved, 6.75 inches (17.1 cm)
- (4) Speculum, vaginal, Graves, Cousco, Sims

B. Removal

- (2) Forceps, sponge, Foerster, straight, 9.5 inches (24.1 cm)
- (2) Speculum, vaginal, Graves,
(1.38 inches [3.5 cm] x 4 inches [10.2 cm])
- (2) Forceps, Bozeman uterine dressing, straight, 10.5 inches (26.7 cm)
- (1) IUD removal forceps, alligator jaw, 8 inches*
- (1) IUD string retriever*
- (1) Alligator IUD removal forceps

For Hormonal Implant

Insertion (Jadelle®, Sino-Implant II®)

- (1) Cup/bowl/gallipot
- (1) Forceps, sponge-holding, straight, 5.5 inches (14 cm)
- (1) Forceps, mosquito, delicate, curved, 5 inches (12.7 cm)
- (1) Scalpel, handle, #3, graduated in cm (1) Trocar (#10)

Insertion (Implanon®)

- (1) Cup/bowl/gallipot
- (1) Forceps sponge-holding, straight, 5.5 inches (14 cm)

Removal (Implanon®, Jadelle®, Sino-Implant II®)

- (1) Cup/bowl/gallipot
- (1) Forceps sponge-holding, straight, 5.5 inches (14 cm)
- (1) Scalpel, handle, #3, graduated in cm
- (1) Forceps, mosquito, straight, 5 inches (12.7 cm)
- (1) Forceps, mosquito, curved, 5 inches (12.7 cm)

C. PERSONNEL

- 20. Full FP training for new FP providers
- 21. Refresher training on FP
- 22. Training on Implants for Doctors and midwives

D. DATA MANGEMENT

- 26. M&E training for service providers
- 27. Provision of FP service registers
- 28. Provision of CLMS forms
- 29. Monthly service statistics data collection
- 30. Quarterly data quality assessments (DQA)

E. QUALITY OF SERVICE

- 46. Provision of FP service protocols
- 47. Provision of FP Performance standards
- 48. Provision of IEC materials
- 49. Provision of job aids
- 50. Conduct On the Job trainings
- 51. Conduct supportive supervision
- 52. Link to distance learning
- 53. Link to FPPN
- 54. Develop a referral network

K.8 Performance Improvement Plan – Covenant Hospital, Benin Street, Kaduna North, Kaduna

State: Kaduna	City: Kaduna	LGA: Kaduna North	Ward:
Phone No of Interviewee: 07035966860	GPS Reading: Latitude: Longitude:		
Facility Type: Private CHC	Managing Authority: Private	Year opened: 1990	Hours: Sun-Sat , 24hours dly

*GPS Reading N/A

1. Situation Analysis

1.1 *Number of Trained FP Providers:*11

1.2 *NHMIS Registers:* Nil

1.3 *FP Clinic Description:*

30)FP counseling and IUD insertion done in consulting room or labour room

31)Several service providers provide FP

32)Providers are in need of FP training to update skills

33)Limited equipment for performance of range of family planning options

34)No standard FP record keeping

1.4 *Patient Volume Statistics (June-Nov 2010):*

Deliveries: 200	PAC (Y/N): Y	ANC: 300	IMM: 400	HIV/PMTCT: - N	FP: 600
------------------------	---------------------	-----------------	-----------------	--------------------------	----------------

1.5 *Integration Plans:*

SERVICE DELIVERY POINT	TYPE OF INTEGRATION	Remarks
ANC	29. IEC 30. Group Counseling 31. One –on –one Counseling 32. Conclusion/decision on informed choice of FP method	
Delivery	Post partum IUD insertions, Exulton campaign.	
Post Natal Visit	IEC, Group counseling through health talk	
Immunization	IEC, Group counseling through health talk, FP service desk extension.	
Post Abortion Care	PAC/FP services	
HIV /AIDS (VCT/ART/PMTCT)	FP IEC, Group counseling, One- on – One counseling	
<i>Special private sector integration plan</i>	<i>Partnership with Marie Stopes International (MSI) for fixed post out reaches for long acting methods (IUD and Implants)</i>	<i>Possible Sub grant to MSI</i>

1.6 *Contraceptive Availability:*

	Provide d	Currentl y	Stockou t 30	Stockou t one	Brands	Cost (N)	Patient Volume*
--	-----------	------------	--------------	---------------	--------	----------	-----------------

		Available	days	year			
Combined OCPs	Yes	Yes	No	No	Duofem Microgynon	150	1
Progestin only pills	Yes	Yes	No	No-		600	7
Emergency contraceptive	Yes	Yes	No	No	Postinor	-	
Male condoms	No	N/A	N/A	N/A	N/A	N/A	N/A
Female condoms	No	-	N/A	N/A	N/A	N/A	N/A
Injectables (2/3 mth)	Yes	Yes	No	No	Noristerat Depo	500	213
Implants	No	No	No	No	N/A	N/A	N/A
IUDs	Yes	Yes	No	No	Copper T	3000	
Female sterilization	No	N/A	N/A	N/A	N/A	N/A	N/A
Male sterilization	No	N/A	N/A	N/A	N/A	N/A	N/A

* (May-Oct 2010)

1.7 *Most popular method:* Injectables

1.8 *Missing IEC Materials:* IEC materials absent

1.9 *Outreach:* No

a) *Number (name) of communities:* -

b) *Frequency:* -

c) *FP included:* -

d) *Link with CBDs:* -Nil

1.10 *Service protocols and guidelines available:* Nil

1.11 *Periodic audits of medical records/service registers:* no

1.12 *QA Committee:* No

1.13 *Minimum Required Infrastructure, Equipment and Supplies for IUD Insertion:*

Item	Available	Item	Available
Private exam room	Yes	Sterilizer / autoclave	Yes
IUD Insertion Kit	Yes	Pedal bin	Yes
Angle poised lamp	Yes	Weighing scale	Yes
Bed screen (4 folding)	Yes	Sphygmomanometer and stethoscope	Yes
Stepping stool	Yes	Cheadle forceps and container	Yes
Mackintosh	Yes	Drums for swabs	Yes
Pillow	Yes	Running water supply (sink/bucket-tap/metal bowl-tripod)	Yes
Apron	Yes	Toilet facilities/latrine	Yes
Kick about	Yes	Window curtains/blinds	Yes
Instrument trolley	No	Sterile gloves and masks	Yes
Instrument tray	Yes	Antiseptic	Yes

1.14 *Minimum Required Infrastructure, Equipment and Supplies for Other Methods*:*

Item	Available	Item	Available
Waiting area	Yes	Private exam room**	Yes
Waiting benches/seats	Yes	Storage area for drugs/supplies	Yes

IEC materials available in waiting area		Electricity	Yes
- posters	Yes	Back-up generator / inverter	Yes
- handbills and display	Yes	Sharps container	Yes
Private counseling room/space	Yes	Sterile disposal latex gloves	Yes
IEC materials available in counseling area	Yes	Disposable syringes and needles	Yes
Counseling room table and chairs (min 3)	Yes	Single room with 4 tables for counseling (no confidentiality)	Yes

*Counseling, condoms, OCPs, injectables, implants

**Same as IUD insertion space. Can be same as counseling room where there is a single provider with low patient load, such as private hospitals.

1.14 Minimum Required Infrastructure, Equipment and Supplies for Minilaparotomy and Vasectomy:

Item	Available	Item	Available
Small operation table	No	instrument trolley	Yes
Operation lamp	No	Oxygen apparatus	Yes
Mini-laparotomy kits	No	Aprons, gowns, masks & theatre boots	Yes
Sphygmomanometer and stethoscope	Yes	Sterile disposal latex gloves	Yes

2. Commitments /Plans for Performance Improvement

Health Facility

Shown commitment to partner NURHI and favourably disposed to the planned fixed post outreach program

Government

Not applicable

NURHI

1. Training of service providers
2. Provision of IEC materials
3. Provision of FP service registers
4. Fixed post outreach program
5. Facilitating 2 way referrals with other facilities, PMVs, CBD agents etc.
6. Membership of the FPPN network
7. Link to NURHI RDF
8. Possible equipment support

3. Opportunities

1. Private health services already set up for easy service integration, thus specifying FP integration will provide a good avenue for documenting advantages of integration in MNCH

4. Good facility location in the highly populated area around the main Market in Kaduna will facilitate influx of FP clients with minimal mobilization
5. Opportunity for increasing uptake for Long acting methods through fixed post outreach program and market out reach through a sub grantee NGO
6. Will form an integral part of an electronic data system for the private sector

4. Challenges

1. Data sources and general information management system require reorganization
2. Irregular power supply

FAMILY PLANNING SERVICE UPGRADE REQUIREMENT

A. INFRASTRUCTURE

1. Curtains for windows and doors for FP clinic

B. EQUIPMENT

Basic Equipment

1. 1 Medium medicine cupboard
2. 1 Drug trolleys
3. 1 each of Drums for swab (small, medium and large)
4. 2 Cheatle forceps & containers
5. 1 Sterilizer
6. 1 Autoclave
7. 1 Instrument trolley
8. 2 Instrument trays
9. 2 Pedal bins
10. 1 Weighing scale
11. 1 IUD insertion couch
12. 1 Angle poised lamps
13. 1 Bed screen
14. 1 Stepping stool
15. Mackintosh
16. 2 Pillows
17. 1 Sphygmomanometer
18. 1 Stethoscope
19. 2 IUCD insertion kits containing the following:
 - A. Insertion**
 - (4) Cup/bowl/gallipot/ Kidney dish
 - (2) Forceps, Schroeder-Braun uterine tenaculum, 9.75 inches (24.8 cm)
 - (2) Forceps, sponge, Foerster, straight, 9.5 inches (24.1 cm)

- (2) Sound, uterine, Sims, 13 inches (33 cm)
- (2) Scissors, operating, Mayo, curved, 6.75 inches (17.1 cm)
- (4) Speculum, vaginal, Graves, Cousco, Sims

B. Removal

- (2) Forceps, sponge, Foerster, straight, 9.5 inches (24.1 cm)
- (2) Speculum, vaginal, Graves,
(1.38 inches [3.5 cm] x 4 inches [10.2 cm])
- (2) Forceps, Bozeman uterine dressing, straight, 10.5 inches (26.7 cm)
- (1) IUD removal forceps, alligator jaw, 8 inches*
- (1) IUD string retriever*
- (1) Alligator IUD removal forceps

For Hormonal Implant

Insertion (Jadelle®, Sino-Implant II®)

- (1) Cup/bowl/gallipot
- (1) Forceps, sponge-holding, straight, 5.5 inches (14 cm)
- (1) Forceps, mosquito, delicate, curved, 5 inches (12.7 cm)
- (1) Scalpel, handle, #3, graduated in cm (1) Trocar (#10)

Insertion (Implanon®)

- (1) Cup/bowl/gallipot
- (1) Forceps sponge-holding, straight, 5.5 inches (14 cm)

Removal (Implanon®, Jadelle®, Sino-Implant II®)

- (1) Cup/bowl/gallipot
- (1) Forceps sponge-holding, straight, 5.5 inches (14 cm)
- (1) Scalpel, handle, #3, graduated in cm
- (1) Forceps, mosquito, straight, 5 inches (12.7 cm)
- (1) Forceps, mosquito, curved, 5 inches (12.7 cm)

C. PERSONNEL

- 23. Full FP training for new FP providers
- 24. Refresher training on FP
- 25. Training on Implants for Doctors and midwives

D. DATA MANGEMENT

- 31. M&E training for service providers
- 32. Provision of FP service registers
- 33. Monthly service statistics data collection
- 34. Quarterly data quality assessments (DQA)

E. QUALITY OF SERVICE

1. Provision of FP service protocols
2. Provision of FP Performance standards
3. Provision of IEC materials
4. Provision of job aids
5. Conduct On the Job trainings
6. Conduct supportive supervision
7. Link to distance learning
8. Link to FPPN
9. Link to NURHI RDF
10. Develop a referral network

KADUNA SOUTH LOCAL GOVERNMENT

K9. Performance Improvement Plan – Gwamna Awan General Hospital, Kakuri, Kaduna

State: Kaduna	City: Kaduna	LGA: Kaduna South	Ward: Makera
Phone No of Interviewee: 08028332539	GPS Reading: Latitude: Longitude:		
Facility Type: General Hospital	Managing Authority: Government	Year opened: 1975	Hours: 24

**GPS Reading N/A*

1. Situation Analysis

1.1 *Number of Trained FP Providers: 3*

1.2 *NHMIS Registers: None*

1.3 *FP Clinic Description:*

35)FP clinic located in a separate building but linked by a long corridor to the MCH section

36)Clinic has a separate counseling area and IUD insertion room with toilets. Well maintained

37)Part of SFH Women Health Project (WHP)

1.4 *Patient Volume Statistics (Jan-Jun 2010):*

Deliveries: 1,445	PAC (Y): 128	ANC: 2753	IMM: 1,603	HIV/PMTCT: 179	FP: 332
-----------------------------	---------------------	------------------	-------------------	--------------------------	----------------

1.5 *Integration Plans:*

SERVICE DELIVERY POINT	TYPE OF INTEGRATION	Remarks
ANC	2. IEC 3. Group Counseling 4. One –on –one Counseling (with PMTCT counseling) 5. Conclusion/decision on informed choice of FP method	
Delivery	Post partum IUD insertions, Exulton campaign.	
Post Natal Visit	IEC, Group counseling through health talk, FP service desk extension.	
Immunization	IEC, Group counseling through health talk, FP service desk extension.	
Post Abortion Care	PAC/FP services	MVA room and provider available. SFH support
HIV /AIDS (VCT/ART/PMTCT)	FP IEC, Group counseling, One- on – One counseling (as part of PMTCT, ART, VCT)	ICAP supported
General out patient clinic	Extension of FP desk, provision of IEC materials and clear directions to the FP clinic	High volume in the GOPD

1.6 *Contraceptive Availability:*

	Provided	Currently Available	Stockout 30 days	Stockout one year	Brands	Cost (N)	Patient Volume*
Combined OCPs	Yes	Yes	Yes	Yes	Lofemenal, LocusF	30	235
Progestin only pills	Yes	Yes	Yes	Yes	Microlut Exluton	30	79
Emergency contraceptive	Yes	Yes	Yes	Yes	Postinon	120	-
Male condoms	Yes	Yes	Yes	Yes	Latex	NA	-
Female condoms	Yes	Yes	Yes	Yes	F2	20	389
Injectables (2/3 mth)	Yes	Yes	Yes	Yes	Noristerat Depo	100	2,528
Implants	Yes	Yes	Yes	Yes	Jadel	2500	38
IUDs	Yes	Yes	No	No	Copper T	200	430
Female sterilization	No	N/A	N/A	N/A	N/A	N/A	N/A
Male sterilization	No	N/A	N/A	N/A	N/A	N/A	N/A

* (Jan-Jun 2010)

1.7 *Most popular method:* Injectables

1.8 *Missing IEC Materials:* No significant absence of IEC seen

1.9 *Outreach:* Nil

a) *Number (name) of communities:*

b) *Frequency:* - N/A

c) *FP included:* - N/A

d) *Link with CBDs:* -N/A

1.10 *Service protocols and guidelines available:* Yes, FMOH guidelines

1.11 *Periodic audits of medical records/service registers:* Yes

1.12 *QA Committee:* Yes

1.13 *Minimum Required Infrastructure, Equipment and Supplies for IUD Insertion:*

Item	Available	Item	Available
Private exam room	Yes	Sterilizer / autoclave	Yes
IUD Insertion Kit	Yes	Pedal bin	Yes
Angle poised lamp	Yes	Weighing scale	Yes
Bed screen (4 folding)	Yes	Sphygmomanometer and stethoscope	Yes
Stepping stool	Yes	Chitel forceps and container	Yes
Mackintosh	Yes	Drums for swabs	Yes
Pillow	Yes	Running water supply (sink/bucket-tap/metal bowl-tripod)	Yes
Apron	Yes	Toilet facilities/latrine	Yes
Kick about	Yes	Window curtains/blinds	Yes
Instrument trolley	Yes	Sterile gloves and masks	Yes
Instrument tray	Yes	Antiseptic	Yes

1.14 *Minimum Required Infrastructure, Equipment and Supplies for Other Methods*:*

Item	Available	Item	Available
Waiting area	Yes	Private exam room**	Yes,
Waiting benches/seats	Yes	Storage area for drugs/supplies	Yes
IEC materials available in waiting area		Electricity	Yes
- posters	Yes	Back-up generator / inverter	Yes
- handbills and display	Yes	Sharps container	Yes
Private counseling room/space	Yes	Sterile disposal latex gloves	Yes
IEC materials available in counseling area	Yes	Disposable syringes and needles	Yes
Counseling room table and chairs (min 3)	Yes	Single room with 4 tables for counseling (no confidentiality)	Yes

*Counseling, condoms, OCPs, injectables, implants

**Same as IUD insertion space. Can be same as counseling room where there is a single provider with low patient load, such as private hospitals.

1.14 *Minimum Required Infrastructure, Equipment and Supplies for Minilaparotomy and Vasectomy:*

Item	Available	Item	Available
Small operation table	Yes	instrument trolley	Yes
Operation lamp	Yes	Oxygen apparatus	Yes
Mini-laparotomy kits	Yes	Aprons, gowns, masks & theatre boots	Yes
Sphygmomanometer and stethoscope	Yes	Sterile disposal latex gloves	Yes

2. Commitments /Plans for Performance Improvement

Health Facility

1. FP clinic has adequate space but requires a little facelift
- 2.

Government

Nil for now

NURHI

1. Training of service providers
2. Provision of IEC materials
3. Provision of FP service registers
4. Joint demand generation/community mobilization activities around the facility
5. Facilitating 2 way referrals with other facilities, PMVs, CBD agents etc.
6. Membership of the FPPN network
7. Possible equipment support

3. Opportunities

1. Good opportunity for integration of all key components
2. Good number of skilled providers present
3. Presence of staff with good FP skills
4. Facility has been supported by SFH's WHP
5. Window for introduction of Electronic data capture for FP

4. Challenges

1. FP clinic far detached from the other hospital buildings
2. Available equipment obsolete and very few

FAMILY PLANNING SERVICE UPGRADE REQUIREMENT

A. INFRASTRUCTURE

1. Painting of FP clinic area
2. Curtains for windows and doors for FP clinic
3. 8 Client chairs for waiting area

B. EQUIPMENT

Basic Equipment

1. 1 Medium medicine cupboard
2. 1 Drug trolley
3. 1 each of Drums for swab (small, medium and large)
4. 2 Chittel forceps & containers
5. 1 Sterilizers
6. 1 Auto clave
7. 1 Instrument trolley
8. 2 Instrument trays
9. 2 Pedal bins
10. 1 Weighing scale
11. 1 IUD insertion couch
12. 2 Angle poised lamps
13. 1 Bed screen
14. 1 Stepping stool
15. Mackintosh
16. 2 Pillows
17. 1 Sphygmomanometer
18. 1 Stethoscope

19. 2 IUCD insertion kits containing the following:

A. Insertion

- (4) Cup/bowl/gallipot/ Kidney dish
- (2) Forceps, Schroeder-Braun uterine tenaculum, 9.75 inches (24.8 cm)

- (2) Forceps, sponge, Foerster, straight, 9.5 inches (24.1 cm)
- (2) Sound, uterine, Sims, 13 inches (33 cm)
- (2) Scissors, operating, Mayo, curved, 6.75 inches (17.1 cm)
- (4) Speculum, vaginal, Graves, Cousco, Sims

B. Removal

- (2) Forceps, sponge, Foerster, straight, 9.5 inches (24.1 cm)
- (2) Speculum, vaginal, Graves,
(1.38 inches [3.5 cm] x 4 inches [10.2 cm])
- (2) Forceps, Bozeman uterine dressing, straight, 10.5 inches (26.7 cm)
- (1) IUD removal forceps, alligator jaw, 8 inches*
- (1) IUD string retriever*
- (1) Alligator IUD removal forceps

For Hormonal Implant

Insertion (Jadelle®, Sino-Implant II®)

- (1) Cup/bowl/gallipot
- (1) Forceps, sponge-holding, straight, 5.5 inches (14 cm)
- (1) Forceps, mosquito, delicate, curved, 5 inches (12.7 cm)
- (1) Scalpel, handle, #3, graduated in cm (1) Trocar (#10)

Insertion (Implanon®)

- (1) Cup/bowl/gallipot
- (1) Forceps sponge-holding, straight, 5.5 inches (14 cm)

Removal (Implanon®, Jadelle®, Sino-Implant II®)

- (1) Cup/bowl/gallipot
- (1) Forceps sponge-holding, straight, 5.5 inches (14 cm)
- (1) Scalpel, handle, #3, graduated in cm
- (1) Forceps, mosquito, straight, 5 inches (12.7 cm)
- (1) Forceps, mosquito, curved, 5 inches (12.7 cm)

C. PERSONNEL

- 26. Full FP training for new FP providers
- 27. Refresher training on FP
- 28. Training of CHEWS as preceptors on FP
- 29. Streamlined CLMS training
- 30. Training on Implants for Doctors and midwives

D. DATA MANGEMENT

- 35. M&E training for service providers
- 36. Provision of FP service registers
- 37. Provision of CLMS forms
- 38. Monthly service statistics data collection
- 39. Quarterly data quality assessments (DQA)

E. QUALITY OF SERVICE

- F. Provision of FP service protocols
- G. Provision of FP Performance standards
- H. Provision of IEC materials
- I. Provision of job aids
- J. Conduct On the Job trainings
- K. Conduct supportive supervision
- L. Link to distance learning
- M. Link to FPPN
- N. Develop a referral network

K.10 - Performance Improvement Plan – Family Health Unit, Makera, Kaduna

State: Kaduna	City: Kaduna	LGA: Kaduna South	Ward: Makera
Phone No of Interviewee: 08035883348	GPS Reading: Latitude: Longitude:		
Facility Type: Basic Health Center	Managing Authority: Government	Year opened: 1972	Hours: 24hours

*GPS Reading N/A

1. Situation Analysis

1.1 *Number of Trained FP Providers:* 2

1.2 *NHMIS Registers:* Nil

1.3 *FP Clinic Description:*

38) Clinic has both counseling and IUD insertion rooms

39) Located in the high-level population density part of Makera in Kaduna town

40) 2 FP –providers

41) Providers are in need of FP training to update skills

42) Limited equipment for performance of range of family planning option

1.4 *Patient Volume Statistics (May-Oct 2010):*

Deliveries: 221	PAC (Y/N): Y	ANC: 2,741	IMM: 592	HIV/PMTCT: - 609	FP: 64
------------------------	---------------------	-------------------	-----------------	----------------------------	---------------

1.5 *Integration Plans:*

SERVICE DELIVERY POINT	TYPE OF INTEGRATION	Remarks
ANC	O. IEC P. Group Counseling Q. One –on –one Counseling (with PMTCT counseling) R. Conclusion/decision on informed choice of FP method	
Delivery	Post partum IUD insertions, Exulton campaign.	
Post Natal Visit	IEC, Group counseling through health talk, FP service desk extension.	
Immunization	IEC, Group counseling through health talk, FP service desk extension.	
Post Abortion Care	PAC/FP services	*linked to Paths2
HIV /AIDS (VCT/ART/PMTCT)	FP IEC, Group counseling, One- on – One counseling (as part of PMTCT, ART, VCT)	

1.6 *Contraceptive Availability:*

	Provide	Currentl y Availabl e	Stockou t 30 days	Stockou t one year	Brands	Cost (N)	Patient Volume*
Combined OCPs	Yes	Yes	No	Yes	Duofem Lofemenal Microgynon	30	1
Progestin only pills	No	No	No	No		-	7
Emergency contraceptive	No	No	No	No	N/A	N/A	N/A
Male condoms	No	No	No	No	N/A	N/A	N/A
Female condoms	No	No	No	No	N/A	N/A	N/A
Injectables (2/3 mth)	Yes	Yes	Yes	Yes	Noristerat Depo	250	213
Implants	No	No	No	No	N/A		-
IUDs	Yes	Yes	No	No	Copper T		20
Female sterilization	No	N/A	N/A	N/A	N/A	N/A	N/A
Male sterilization	No	N/A	N/A	N/A	N/A	N/A	N/A

* (Jan-Jun 2010)

1.7 *Most popular method:* Injectables

1.8 *Missing IEC Materials:* Some IEC materials seen

1.9 *Outreach:* Yes

a) *Number (name) of communities:* - 5

b) *Frequency:* -

c) *FP included:* -

d) *Link with CBDs:* -Nil

1.10 *Service protocols and guidelines available:* Nil

1.11 *Periodic audits of medical records/service registers:* no

1.12 *QA Committee:* No

1.13 *Minimum Required Infrastructure, Equipment and Supplies for IUD Insertion:*

Item	Available	Item	Available
Private exam room	Yes	Sterilizer / autoclave	Yes
IUD Insertion Kit	Yes	Pedal bin	Yes
Angle poised lamp	Yes	Weighing scale	Yes
Bed screen (4 folding)	Yes	Sphygmomanometer and stethoscope	Yes
Stepping stool	Yes	Cheadle forceps and container	Yes
Mackintosh	Yes	Drums for swabs	Yes
Pillow	Yes	Running water supply (sink/bucket-tap/metal bowl-tripod)	Yes
Apron	Yes	Toilet facilities/latrine	Yes
Kick about	Yes	Window curtains/blinds	Yes
Instrument trolley	No	Sterile gloves and masks	Yes
Instrument tray	Yes	Antiseptic	Yes

1.14 *Minimum Required Infrastructure, Equipment and Supplies for Other Methods*:*

Item	Available	Item	Available
Waiting area	Yes	Private exam room**	Yes
Waiting benches/seats	Yes	Storage area for drugs/supplies	Yes
IEC materials available in waiting area		Electricity	no
- posters	Yes	Back-up generator / inverter	no
- handbills and display	Yes	Sharps container	Yes
Private counseling room/space	Yes	Sterile disposal latex gloves	Yes
IEC materials available in counseling area	Yes	Disposable syringes and needles	Yes
Counseling room table and chairs (min 3)	Yes	Single room with 4 tables for counseling (no confidentiality)	Yes

*Counseling, condoms, OCPs, injectables, implants

**Same as IUD insertion space. Can be same as counseling room where there is a single provider with low patient load, such as private hospitals.

1.14 *Minimum Required Infrastructure, Equipment and Supplies for Minilaparotomy and Vasectomy:*

Item	Available	Item	Available
Small operation table	No	instrument trolley	Yes
Operation lamp	No	Oxygen apparatus	Yes
Mini-laparotomy kits	No	Aprons, gowns, masks & theatre boots	Yes
Sphygmomanometer and stethoscope	Yes	Sterile disposal latex gloves	Yes

2. Commitments /Plans for Performance Improvement

Health Facility

To work on restoring electricity to the facility

Government

Nil presently

NURHI

1. Training of service providers
2. Provision of IEC materials
3. Provision of FP service registers
4. Joint demand generation/community mobilization activities around the facility
5. Facilitating 2 way referrals with other facilities, PMVs, CBD agents etc.
6. Membership of the FPPN network
7. Possible equipment support

3. Opportunities

1. Good facility location provides for good volume of clients and opportunities for mobilization
2. Demand creation activities

4. Challenges

1. Data sources and general information management system require reorganization
2. Strategy for effective demand creation
3. Paucity of services providers
4. Poorly equipped labour room
5. Lack of power supply and backup generator
6. No periodic audits of service registers

FAMILY PLANNING SERVICE UPGRADE REQUIREMENT

A. INFRASTRUCTURE

1. Curtains for windows and doors for FP clinic
2. Water source –well

B. EQUIPMENT

Basic Equipment

1. 1 Medium medicine cupboard
2. 1 Drug trolleys
3. 1 each of Drums for swab (small, medium and large)
4. 2 Cheadle forceps & containers
5. 1 Sterilizer
6. 1 Autoclave
7. 1 Instrument trolley
8. 2 Instrument trays
9. 2 Pedal bins
10. 1 Weighing scale
11. 1 IUD insertion couch
12. 1 Angle poised lamps
13. 1 Bed screen
14. 1 Stepping stool
15. Mackintosh
16. 2 Pillows
17. 1 Sphygmomanometer
18. 1 Stethoscope
19. Patient Chairs for the waiting area
20. Patient chairs for counseling area
21. 2 IUCD insertion kits containing the following:

A. Insertion

- (4) Cup/bowl/gallipot/ Kidney dish
- (2) Forceps, Schroeder-Braun uterine tenaculum, 9.75 inches (24.8 cm)
- (2) Forceps, sponge, Foerster, straight, 9.5 inches (24.1 cm)
- (2) Sound, uterine, Sims, 13 inches (33 cm)
- (2) Scissors, operating, Mayo, curved, 6.75 inches (17.1 cm)
- (4) Speculum, vaginal, Graves, Cousco, Sims

B. Removal

- (2) Forceps, sponge, Foerster, straight, 9.5 inches (24.1 cm)
- (2) Speculum, vaginal, Graves,
(1.38 inches [3.5 cm] x 4 inches [10.2 cm])
- (2) Forceps, Bozeman uterine dressing, straight, 10.5 inches (26.7 cm)
- (1) IUD removal forceps, alligator jaw, 8 inches*
- (1) IUD string retriever*
- (1) Alligator IUD removal forceps

For Hormonal Implant

Insertion (Jadelle®, Sino-Implant II®)

- (1) Cup/bowl/gallipot
- (1) Forceps, sponge-holding, straight, 5.5 inches (14 cm)
- (1) Forceps, mosquito, delicate, curved, 5 inches (12.7 cm)
- (1) Scalpel, handle, #3, graduated in cm (1) Trocar (#10)

Insertion (Implanon®)

- (1) Cup/bowl/gallipot
- (1) Forceps sponge-holding, straight, 5.5 inches (14 cm)

Removal (Implanon®, Jadelle®, Sino-Implant II®)

- (1) Cup/bowl/gallipot
- (1) Forceps sponge-holding, straight, 5.5 inches (14 cm)
- (1) Scalpel, handle, #3, graduated in cm
- (1) Forceps, mosquito, straight, 5 inches (12.7 cm)
- (1) Forceps, mosquito, curved, 5 inches (12.7 cm)

C. PERSONNEL

1. Full FP training for new FP providers
2. Refresher training on FP
3. Training of CHEWS as preceptors on FP
4. Streamlined CLMS training
5. Training on Implants for Doctors and midwives

D. DATA MANGEMENT

1. M&E training for service providers
2. Provision of FP service registers

3. Provision of CLMS forms
4. Monthly service statistics data collection
5. Quarterly data quality assessments (DQA)

E. QUALITY OF SERVICE

1. Provision of FP service protocols
2. Provision of FP Performance standards
3. Provision of IEC materials
4. Provision of job aids
5. Conduct On the Job trainings
6. Conduct supportive supervision
7. Link to distance learning
8. Link to FPPN
9. Develop a referral network

K. 11 - Performance Improvement Plan – Hajia Asmau Ahmed Makarfi Health Center, Barnawa, Kaduna

State: Kaduna	City: Kaduna	LGA: Kaduna South	Ward: Barnawa Ward II
Phone No of Interviewee: 08039661392	GPS Reading: Latitude: Longitude:		
Facility Type: Comprehensive Health Center	Managing Authority: Government	Year opened: 1972	Hours: 24hours

*GPS Reading N/A

1. Situation Analysis

1.1 *Number of Trained FP Providers:* 5

1.2 *NHMIS Registers:* None

1.3 *FP Clinic Description:*

43) Current building infrastructure is highly dilapidated with a big FP room that opens into the general consultation room (no privacy).

44) Clients have high preference for Injectables

45) Limited equipment for performance of range of family planning options

1.4 *Patient Volume Statistics (May-Oct 2010):*

Deliveries: 207	PAC (Y/N): - Y	ANC: 773	IMM: 5,807	HIV/PMTCT: - N	FP: 94
------------------------	-----------------------	-----------------	-------------------	-----------------------	---------------

1.5 *Integration Plans:*

SERVICE DELIVERY POINT	TYPE OF INTEGRATION	Remarks
ANC	10. IEC 11. Group Counseling 12. One –on –one Counseling (with PMTCT counseling) 13. Conclusion/decision on informed choice of FP method	
Delivery	Post partum IUD insertions, Exulton campaign.	
Post Natal Visit	IEC, Group counseling through health talk, FP service desk extension.	
Immunization	IEC, Group counseling through health talk, FP service desk extension.	
Post Abortion Care	PAC/FP services	*Formerly linked to PPFN
HIV /AIDS (VCT/ART/PMTCT)	Nil)	

1.6 *Contraceptive Availability:*

	Provide d	Currentl y Availabl	Stockou t 30 days	Stockou t one year	Brands	Cost (N)	Patient Volume*

		e					
Combined OCPs	Yes	Yes	No	No	Duofem	40	20
Progestin only pills	No	-	N/A	N/A	N/A	N/A	N/A
Emergency contraceptive	No	-		N/A	N/A	N/A	N/A
Male condoms	No	-		N/A	N/A	N/A	N/A
Female condoms	No	-		N/A	N/A	N/A	N/A
Injectables (2/3 mth)	Yes	Yes	yes	yes	Noristerat Depoprovera	60	122
Implants	No	N/A	N/A	N/A	N/A	N/A	N/A
IUDs	Yes	Yes	Yes	Yes	Copper T	500	4
Female sterilization	No	N/A	N/A	N/A	N/A	N/A	N/A
Male sterilization	No	N/A	N/A	N/A	N/A	N/A	N/A

*(Jan-Jun 2010)

1.7 *Most popular method:* Injectables

1.8 *Missing IEC Materials:* Few IEC materials seen

1.9 *Outreach:* Yes

a) *Number (name) of communities:* - 8; Uganda, Barnawa Market, Fertiliser close, Nuhu Aliyu estate, Shagari Lowcost, Challawa, and Complex

b) *Frequency:* - twice monthly

c) *FP included:* - Yes

d) *Link with CBDs:* -Nil

1.10 *Service protocols and guidelines available:* Yes, FMOH

1.11 *Periodic audits of medical records/service registers:* Yes

1.12 *QA Committee:* Yes

1.13 *Minimum Required Infrastructure, Equipment and Supplies for IUD Insertion:*

Item	Available	Item	Available
Private exam room	No	Sterilizer / autoclave	Yes
IUD Insertion Kit	Yes	Pedal bin	Yes
Angle poised lamp	No	Weighing scale	No
Bed screen (4 folding)	No	Sphygmomanometer and stethoscope	Yes
Stepping stool	Yes	Cheadle forceps and container	No
Mackintosh	Yes	Drums for swabs	Yes
Pillow	Yes	Running water supply (sink/bucket-tap/metal bowl-tripod)	yes
Apron	Yes	Toilet facilities/latrine	Yes
Kick about	Yes	Window curtains/blinds	Yes
Instrument trolley	Yes	Sterile gloves and masks	Yes
Instrument tray	Yes	Antiseptic	Yes

1.14 *Minimum Required Infrastructure, Equipment and Supplies for Other Methods*:*

Item	Available	Item	Available
Waiting area	Yes	Private exam room**	No
Waiting benches/seats	Yes	Storage area for drugs/supplies	Yes
IEC materials available in waiting		Electricity	Yes

area			
- posters	Yes	Back-up generator / inverter	Yes
- handbills and display	Yes	Sharps container	Yes
Private counseling room/space	Yes	Sterile disposal latex gloves	Yes
IEC materials available in counseling area	Yes	Disposable syringes and needles	Yes
Counseling room table and chairs (min 3)	No	Single room with 4 tables for counseling (no confidentiality)	Yes

*Counseling, condoms, OCPs, injectables, implants

**Same as IUD insertion space. Can be same as counseling room where there is a single provider with low patient load, such as private hospitals.

1.14 Minimum Required Infrastructure, Equipment and Supplies for Minilaparotomy and Vasectomy:

Item	Available	Item	Available
Small operation table	No	instrument trolley	Yes
Operation lamp	Yes	Oxygen apparatus	Yes
Mini-laparotomy kits	No	Aprons, gowns, masks & theatre boots	Yes
Sphygmomanometer and stethoscope	Yes	Sterile disposal latex gloves	Yes

2. Commitments /Plans for Performance Improvement

Health Facility

Favourably disposed to integrated FP service delivery

Government

Nil presently

NURHI

1. Training of service providers
2. Provision of IEC materials
3. Provision of FP service registers
4. Joint demand generation/community mobilization activities in the 8 outreach locations
5. Facilitating 2 way referrals with other facilities, PMVs, CBD agents etc.
6. Membership of the FPPN network
7. Possible equipment support

3. Opportunities

1. Located in a high -level population density area in Barnawa GRA in Southern part of Kaduna town
2. Good opportunity for basic integration model
3. Existing Out reach program to build upon

4. Challenges

4. Highly compacted facility in need of expansion
5. No source of regular potable water
6. No viable power source
7. Shortage of skilled providers

FAMILY PLANNING SERVICE UPGRADE REQUIREMENT

A. INFRASTRUCTURE

1. Curtains for windows and doors for FP clinic
2. Water source –well

B. EQUIPMENT

Basic Equipment

1. 1 Medium medicine cupboard
2. 1 Drug trolleys
3. 1 each of Drums for swab (small, medium and large)
4. 2 Cheadle forceps & containers
5. 1 Sterilizer
6. 1 Autoclave
7. 1 Instrument trolley
8. 2 Instrument trays
9. 2 Pedal bins
10. 1 Weighing scale
11. 1 IUD insertion couch
12. 1 Angle poised lamps
13. 1 Bed screen
14. 1 Stepping stool
15. Mackintosh
16. 2 Pillows
17. 1 Sphygmomanometer
18. 1 Stethoscope
19. Patient Chairs for the waiting area
20. Patient chairs for counseling area
21. 2 IUCD insertion kits containing the following:

A. Insertion

- (4) Cup/bowl/gallipot/ Kidney dish
- (2) Forceps, Schroeder-Braun uterine tenaculum, 9.75 inches (24.8 cm)
- (2) Forceps, sponge, Foerster, straight, 9.5 inches (24.1 cm)
- (2) Sound, uterine, Sims, 13 inches (33 cm)
- (2) Scissors, operating, Mayo, curved, 6.75 inches (17.1 cm)
- (4) Speculum, vaginal, Graves, Cousco, Sims

B. Removal

- (2) Forceps, sponge, Foerster, straight, 9.5 inches (24.1 cm)
- (2) Speculum, vaginal, Graves,
(1.38 inches [3.5 cm] x 4 inches [10.2 cm])
- (2) Forceps, Bozeman uterine dressing, straight, 10.5 inches (26.7 cm)
- (1) IUD removal forceps, alligator jaw, 8 inches*
- (1) IUD string retriever*
- (1) Alligator IUD removal forceps

For Hormonal Implant

Insertion (Jadelle®, Sino-Implant II®)

- (1) Cup/bowl/gallipot
- (1) Forceps, sponge-holding, straight, 5.5 inches (14 cm)
- (1) Forceps, mosquito, delicate, curved, 5 inches (12.7 cm)
- (1) Scalpel, handle, #3, graduated in cm (1) Trocar (#10)

Insertion (Implanon®)

- (1) Cup/bowl/gallipot
- (1) Forceps sponge-holding, straight, 5.5 inches (14 cm)

Removal (Implanon®, Jadelle®, Sino-Implant II®)

- (1) Cup/bowl/gallipot
- (1) Forceps sponge-holding, straight, 5.5 inches (14 cm)
- (1) Scalpel, handle, #3, graduated in cm
- (1) Forceps, mosquito, straight, 5 inches (12.7 cm)
- (1) Forceps, mosquito, curved, 5 inches (12.7 cm)

C. PERSONNEL

1. Full FP training for new FP providers
2. Refresher training on FP
3. Training of CHEWS as preceptors on FP
4. Streamlined CLMS training
5. Training on Implants for Doctors and midwives

D. DATA MANGEMENT

1. M&E training for service providers
2. Provision of FP service registers
3. Provision of CLMS forms
4. Monthly service statistics data collection
5. Quarterly data quality assessments (DQA)

E. QUALITY OF SERVICE

1. Provision of FP service protocols
2. Provision of FP Performance standards
3. Provision of IEC materials
4. Provision of job aids
5. Conduct On the Job trainings
6. Conduct supportive supervision
7. Link to distance learning
8. Link to FPPN
9. Develop a referral network

K. 12 - Performance Improvement Plan – PHC-Model PHC Down quarters, Makera, Kaduna South, Kaduna

State: Kaduna	City: Kaduna	LGA: Kaduna South	Ward: Makera
Phone No of Interviewee: 08025404718	GPS Reading: Latitude: Longitude:		
Facility Type: PHC	Managing Authority: Government but owned by community	Year opened: 2007 (Model unit)	Hours: Sun-Sat , 7hours dly

*GPS Reading N/A

1. Situation Analysis

1.1 *Number of Trained FP Providers:* **3**

1.2 *NHMIS Registers:* None

1.3 *FP Clinic Description:*

46)The clinic has a counseling area and an IUD insertion room

47)FP service uptake low compared to target population

48)Providers are in need of FP training to update skills

49)Limited equipment for performance of range of family planning options

1.4 *Patient Volume Statistics (May-Oct 2010):*

Deliveries:	PAC (Y/N): - N	ANC: 32	IMM: 148	HIV/PMTCT: - 90	FP: 10
--------------------	-----------------------	----------------	-----------------	---------------------------	---------------

1.5 *Integration Plans:*

SERVICE DELIVERY POINT	TYPE OF INTEGRATION	Remarks
ANC	10. IEC 11. Group Counseling 12. One –on –one Counseling (with PMTCT counseling) 13. Conclusion/decision on informed choice of FP method	
Delivery	Post partum IUD insertions, Exulton campaign.	
Post Natal Visit	IEC, One – on – One counseling	
Immunization	IEC, One – on –One counseling	
Post Abortion Care	Nil	
HIV /AIDS (VCT/ART/PMTCT)	FP IEC, Group counseling, One- on – One counseling (as part of PMTCT, ART, VCT)	

1.6 *Contraceptive Availability:*

	Provide d	Currentl y Availabl e	Stockou t 30 days	Stockou t one year	Brands	Cost (N)	Patient Volume*

Combined OCPs	Yes	Yes	No	No	Duofem Lofemenal Microgynon	100	-
Progestin only pills	No	Yes	No	No	Exluton	-	-
Emergency contraceptive	Yes	Yes	No	No	Postinor 2	-	
Male condoms	No	No	No	No	N/A	N/A	N/A
Female condoms	No	No	N/A	N/A	N/A	N/A	N/A
Injectables (2/3 mth)	Yes	Yes	Yes	Yes	Noristerat Depo	750	10
Implants	No	No	No	No	N/A	N/A	N/A
IUDs	No	No	N/A	N/A	N/A	N/A	N/A
Female sterilization	No	N/A	N/A	N/A	N/A	N/A	N/A
Male sterilization	No	N/A	N/A	N/A	N/A	N/A	N/A

*(Jan-Jun 2010)

1.7 *Most popular method:* Injectables

1.8 *Missing IEC Materials:* Most IEC materials absent

1.9 *Outreach:* Yes

a) *Number (name) of communities:* - 2

b) *Frequency:* - monthly

c) *FP included:* - No

d) *Link with CBDs:* -Nil

1.10 *Service protocols and guidelines available:* No

1.11 *Periodic audits of medical records/service registers:* Yes

1.12 *QA Committee:* Yes

1.13 *Minimum Required Infrastructure, Equipment and Supplies for IUD Insertion:*

Item	Available	Item	Available
Private exam room	Yes	Sterilizer / autoclave	Yes
IUD Insertion Kit	Yes	Pedal bin	Yes
Angle poised lamp	Yes	Weighing scale	Yes
Bed screen (4 folding)	Yes	Sphygmomanometer and stethoscope	Yes
Stepping stool	Yes	Cheadle forceps and container	Yes
Mackintosh	Yes	Drums for swabs	Yes
Pillow	Yes	Running water supply (sink/bucket-tap/metal bowl-tripod)	Yes
Apron	Yes	Toilet facilities/latrine	Yes
Kick about	Yes	Window curtains/blinds	Yes
Instrument trolley	No	Sterile gloves and masks	Yes
Instrument tray	Yes	Antiseptic	Yes

1.14 *Minimum Required Infrastructure, Equipment and Supplies for Other Methods*:*

Item	Available	Item	Available
Waiting area	Yes	Private exam room**	Yes,
Waiting benches/seats	Yes	Storage area for drugs/supplies	Yes
IEC materials available in waiting		Electricity	no

area			
- posters	Yes	Back-up generator / inverter	no
- handbills and display	Yes	Sharps container	Yes
Private counseling room/space	Yes	Sterile disposal latex gloves	Yes
IEC materials available in counseling area	Yes	Disposable syringes and needles	Yes
Counseling room table and chairs (min 3)	Yes		

*Counseling, condoms, OCPs, injectables, implants

**Same as IUD insertion space. Can be same as counseling room where there is a single provider with low patient load, such as private hospitals.

1.14 Minimum Required Infrastructure, Equipment and Supplies for Minilaparotomy and Vasectomy:

Item	Available	Item	Available
Small operation table	No	instrument trolley	Yes
Operation lamp	No	Oxygen apparatus	Yes
Mini-laparotomy kits	No	Aprons, gowns, masks & theatre boots	Yes
Sphygmomanometer and stethoscope	Yes	Sterile disposal latex gloves	Yes

2. Commitments /Plans for Performance Improvement

Health Facility

Government

Nil presently

NURHI

1. Training of service providers
2. Provision of IEC materials
3. Provision of FP service registers
4. Joint demand generation/community mobilization activities around the facility
5. Facilitating 2 way referrals with other facilities, PMVs, CBD agents etc.
6. Membership of the FPPN network
7. Possible equipment support

3. Opportunities

1. Good opportunity for basic integration model of at least all key components
2. Located in the highly populated area of the old railway yard in Southern part of Kaduna town
3. Community ownership of the facility despite its being built by NPHCDA will provide good community patronage, support and oversight

4. Challenges

1. Facility is very insecure and isolated with history of robbery attacks
2. Facility does not operate 24 hours service which decreases client patronage for Deliveries
3. FP service uptake low compared to target population can be addressed by an appropriate strategy for effective demand creation
4. Provides only oral pills and injectables
5. Data sources and general information management system require reorganization

FAMILY PLANNING SERVICE UPGRADE REQUIREMENT

A. INFRASTRUCTURE

Nil

B. EQUIPMENT

Basic Equipment

1. 1 Medium medicine cupboard
2. 1 Drug trolleys
3. 1 each of Drums for swab (small, medium and large)
4. 2 Cheadle forceps & containers
5. 1 Sterilizer
6. 1 Autoclave
7. 1 Instrument trolley
8. 2 Instrument trays
9. 2 Pedal bins
10. 1 Weighing scale
11. 1 IUD insertion couch
12. 1 Angle poised lamps
13. 1 Bed screen
14. 1 Stepping stool
15. Mackintosh
16. 2 Pillows
17. 1 Sphygmomanometer
18. 1 Stethoscope
19. 2 IUCD insertion kits containing the following:
 - A. Insertion**
 - (4) Cup/bowl/gallipot/ Kidney dish
 - (2) Forceps, Schroeder-Braun uterine tenaculum, 9.75 inches (24.8 cm)

- (2) Forceps, sponge, Foerster, straight, 9.5 inches (24.1 cm)
- (2) Sound, uterine, Sims, 13 inches (33 cm)
- (2) Scissors, operating, Mayo, curved, 6.75 inches (17.1 cm)
- (4) Speculum, vaginal, Graves, Cousco, Sims

B. Removal

- (2) Forceps, sponge, Foerster, straight, 9.5 inches (24.1 cm)
- (2) Speculum, vaginal, Graves,
(1.38 inches [3.5 cm] x 4 inches [10.2 cm])
- (2) Forceps, Bozeman uterine dressing, straight, 10.5 inches (26.7 cm)
- (1) IUD removal forceps, alligator jaw, 8 inches*
- (1) IUD string retriever*
- (1) Alligator IUD removal forceps

For Hormonal Implant

Insertion (Jadelle®, Sino-Implant II®)

- (1) Cup/bowl/gallipot
- (1) Forceps, sponge-holding, straight, 5.5 inches (14 cm)
- (1) Forceps, mosquito, delicate, curved, 5 inches (12.7 cm)
- (1) Scalpel, handle, #3, graduated in cm (1) Trocar (#10)

Insertion (Implanon®)

- (1) Cup/bowl/gallipot
- (1) Forceps sponge-holding, straight, 5.5 inches (14 cm)

Removal (Implanon®, Jadelle®, Sino-Implant II®)

- (1) Cup/bowl/gallipot
- (1) Forceps sponge-holding, straight, 5.5 inches (14 cm)
- (1) Scalpel, handle, #3, graduated in cm
- (1) Forceps, mosquito, straight, 5 inches (12.7 cm)
- (1) Forceps, mosquito, curved, 5 inches (12.7 cm)

C. PERSONNEL

1. Full FP training for new FP providers
2. Refresher training on FP
3. Training of CHEWS as preceptors on FP
4. Streamlined CLMS training
5. Training on Implants for Doctors and midwives

D. DATA MANGEMENT

1. M&E training for service providers
2. Provision of FP service registers
3. Provision of CLMS forms
4. Monthly service statistics data collection
5. Quarterly data quality assessments (DQA)

E. QUALITY OF SERVICE

1. Provision of FP service protocols
2. Provision of FP Performance standards
3. Provision of IEC materials
4. Provision of job aids
5. Conduct On the Job trainings
6. Conduct supportive supervision
7. Link to distance learning
8. Link to FPPN
9. Develop a referral network

K.13 - Performance Improvement Plan – PHC Ungwan Muazu, Kaduna South, Kaduna

State: Kaduna	City: Kaduna	LGA: Kaduna South	Ward:
Phone No of Interviewee: 08028537152	GPS Reading: Latitude: Longitude:		
Facility Type: PHC	Managing Authority: Government	Year opened: 1996	Hours: Mon – Friday, 14 hours daily

*GPS Reading N/A

1. Situation Analysis

1.1 *Number of Trained FP Providers:* 0

1.2 *NHMIS Registers:* None

1.3 *FP Clinic Description:*

50) No FP services offered, except counseling

51) Linked to PATHS2 DRF

52) New building awaiting commissioning

53) Dearth of providers

1.4 *Patient Volume Statistics (June-Nov 2010):*

Deliveries: 24	PAC (Y)/N: N	ANC: 591	IMM: 2,357	HIV/PMTCT: -	FP:
-----------------------	---------------------	-----------------	-------------------	---------------------	------------

1.5 *Integration Plans:*

SERVICE DELIVERY POINT	TYPE OF INTEGRATION	Remarks
ANC	10. IEC 11. Group Counseling 12. One –on –one Counseling (with PMTCT counseling) 13. Conclusion/decision on informed choice of FP method	
Delivery	Exulton campaign.	
Post Natal Visit	IEC, Group counseling through health talk	
Immunization	IEC, Group counseling through health talk,	
Post Abortion Care		
HIV /AIDS (VCT/ART/PMTCT)		

1.6 *Contraceptive Availability:*

	Provide d	Currentl y Availabl e	Stockou t 30 days	Stockou t one year	Brands	Cost (N)	Patient Volume*
Combined OCPs	no	N/A	N/A	N/A	N/A	N/A	N/A
Progestin only pills	no	N/A	N/A	N/A	N/A	N/A	N/A
Emergency	no	N/A	N/A	N/A	N/A	N/A	N/A

contraceptive							
Male condoms	no	N/A	N/A	N/A	N/A	N/A	N/A
Female condoms	no	N/A	N/A	N/A	N/A	N/A	N/A
Injectables (2/3 mth)	no	N/A	N/A	N/A	N/A	N/A	N/A
Implants	no	N/A	N/A	N/A	N/A	N/A	N/A
IUDs	no	N/A	N/A	N/A	N/A	N/A	N/A
Female sterilization	No	N/A	N/A	N/A	N/A	N/A	N/A
Male sterilization	No	N/A	N/A	N/A	N/A	N/A	N/A

*(Jan-Jun 2010)

1.7 *Most popular method:* Nil

1.8 *Missing IEC Materials:* Most IEC materials not evident

1.9 *Outreach:* Yes, Immunisation

a) *Number (name) of communities:* 8; Ungwan Muazu, Muazu central, Yanbiyu Bread, Dan Muazu, Audu, Keffi, Kudan Hakimi, Ungwan Arewa, and Yan Zuma

b) *Frequency:* - weekly

c) *FP included:* - No

d) *Link with CBDs:* - No

1.10 *Service protocols and guidelines available:* Yes, FMOH

1.11 *Periodic audits of medical records/service registers:* Yes

1.12 *QA Committee:* Yes

1.13 *Minimum Required Infrastructure, Equipment and Supplies for IUD Insertion:*

Item	Available	Item	Available
Private exam room	No	Sterilizer / autoclave	No
IUD Insertion Kit	No	Pedal bin	Yes
Angle poised lamp	No	Weighing scale	Yes
Bed screen (4 folding)	No	Sphygmomanometer and stethoscope	Yes
Stepping stool	Yes	Cheadle forceps and container	Yes
Mackintosh	Yes	Drums for swabs	Yes
Pillow	Yes	Running water supply (sink/bucket-tap/metal bowl-tripod)	Yes
Apron	Yes	Toilet facilities/latrine	Yes
Kick about	Yes	Window curtains/blinds	Yes
Instrument trolley	No	Sterile gloves and masks	Yes
Instrument tray	Yes	Antiseptic	Yes

1.14 *Minimum Required Infrastructure, Equipment and Supplies for Other Methods*:*

Item	Available	Item	Available
Waiting area	Yes	Private exam room**	No
Waiting benches/seats	Yes	Storage area for drugs/supplies	Yes
IEC materials available in waiting area		Electricity	Yes
- posters	Yes	Back-up generator / inverter	Yes
- handbills and display	Yes	Sharps container	Yes
Private counseling room/space	Yes	Sterile disposal latex gloves	Yes
IEC materials available in counseling area	Yes	Disposable syringes and needles	Yes

Counseling room table and chairs (min 3)	No		
--	----	--	--

*Counseling, condoms, OCPs, injectables, implants

**Same as IUD insertion space. Can be same as counseling room where there is a single provider with low patient load, such as private hospitals.

1.14 Minimum Required Infrastructure, Equipment and Supplies for Minilaparotomy and Vasectomy:

Item	Available	Item	Available
Small operation table	No	instrument trolley	Yes
Operation lamp	No	Oxygen apparatus	Yes
Mini-laparotomy kits	No	Aprons, gowns, masks & theatre boots	Yes
Sphygmomanometer and stethoscope	Yes	Sterile disposal latex gloves	Yes

2. Commitments /Plans for Performance Improvement

Health Facility

Prepared to provide staff for FP training and ensure establishment of FP services

Government

Nil presently

NURHI

1. Training of service providers
2. Provision of IEC materials
3. Provision of FP service registers
4. Incorporation of FP into the weekly outreach programs and other demand generation/community mobilization activities around the facility
5. Facilitating 2 way referrals with other facilities, PMVs, CBD agents etc.
6. Membership of the FPPN network
7. Possible equipment support

3. Opportunities

1. Opportunity for introduction of FP services

4. Challenges

2. No FP services
3. High ANC turnover but low deliveries
4. Shortage of skilled providers

FAMILY PLANNING SERVICE UPGRADE REQUIREMENT

A. INFRASTRUCTURE

Nil of Note

B. EQUIPMENT

Basic Equipment

1. 1 Medium medicine cupboard
2. 1 Drug trolleys
3. 1 each of Drums for swab (small, medium and large)
4. 2 Cheadle forceps & containers
5. 1 Sterilizer
6. 1 Autoclave
7. 1 Instrument trolley
8. 2 Instrument trays
9. 2 Pedal bins
10. 1 Weighing scale
11. 1 IUD insertion couch
12. 1 Angle poised lamps
13. 1 Bed screen
14. 1 Stepping stool
15. Mackintosh
16. 2 Pillows
17. 1 Sphygmomanometer
18. 1 Stethoscope

19. 2 IUCD insertion kits containing the following:

A. Insertion

- (4) Cup/bowl/gallipot/ Kidney dish
- (2) Forceps, Schroeder-Braun uterine tenaculum, 9.75 inches (24.8 cm)
- (2) Forceps, sponge, Foerster, straight, 9.5 inches (24.1 cm)
- (2) Sound, uterine, Sims, 13 inches (33 cm)
- (2) Scissors, operating, Mayo, curved, 6.75 inches (17.1 cm)
- (4) Speculum, vaginal, Graves, Cousco, Sims

B. Removal

- (2) Forceps, sponge, Foerster, straight, 9.5 inches (24.1 cm)
- (2) Speculum, vaginal, Graves,
(1.38 inches [3.5 cm] x 4 inches [10.2 cm])
- (2) Forceps, Bozeman uterine dressing, straight, 10.5 inches (26.7 cm)
- (1) IUD removal forceps, alligator jaw, 8 inches*
- (1) IUD string retriever*
- (1) Alligator IUD removal forceps

C. PERSONNEL

1. Full FP training for new FP providers
2. Training of CHEWS as preceptors on FP
3. Streamlined CLMS training

D. DATA MANGEMENT

1. M&E training for service providers
2. Provision of FP service registers
3. Provision of CLMS forms
4. Monthly service statistics data collection
5. Quarterly data quality assessments (DQA)

E. QUALITY OF SERVICE

1. Provision of FP service protocols
2. Provision of FP Performance standards
3. Provision of IEC materials
4. Provision of job aids
5. Conduct On the Job trainings
6. Conduct supportive supervision
7. Link to distance learning
8. Link to FPPN
9. Develop a referral network